



**Women's Health Initiative
2026 Annual Progress Report**

Data as of: February 21, 2026

The data, if any, contained in this report/deliverable are preliminary and may contain unvalidated findings. These data are not intended for public use. Public use of these data could create erroneous conclusions which, if acted upon, could threaten public health or safety.

Table of Contents

Tables	Page
1. Overview	1-1
Table 1.1 WHI Centers and Principal Investigators	1-7
Figure 1.1 Distribution of Current Age for Participants in Active Follow-Up	1-8
Table 1.2 Composition of WHI Cohort over Time.....	1-9
Table 1.3 Participation and Vital Status of WHI Participants by Cohort	1-10
Table 1.4 Response Rates to CCC Annual Mailings and Regional Center (RC) Follow-up in 2025 by Cohort.....	1-11
Table 1.5 Response Rates to CCC Annual Mailings and Regional Center (RC) Follow-up in 2025 by Regional Center.....	1-12
 2. Clinical Outcomes	
Table 2.1 Cause of Death (Annualized Percentages) by Cohort	2-1
Table 2.2 Cause of Death (Annualized Percentages) by Race/Ethnicity	2-3
Table 2.3 Cause of Death (Age-Specific Annualized Percentages) by Age at Death.....	2-5
Table 2.4 Verified Cancers (Annualized Percentages) by Race/Ethnicity	2-7
Table 2.5 Verified Cancers (Age-Specific Annualized Percentages) by Age at Diagnosis.....	2-10
Table 2.6 Verified Cardiovascular Outcomes (Annualized Percentages) by Race/Ethnicity	2-13
Table 2.7 Verified Cardiovascular Outcomes (Age-Specific Annualized Percentages) by Age at Diagnosis	2-14
Table 2.8 Fracture Outcomes (Annualized Percentages) by Race/Ethnicity	2-15
Table 2.9 Fracture Outcomes (Age-Specific Annualized Percentages) by Age at Diagnosis	2-16
Table 2.10 WHI Outcomes by Calendar Year and Cohort	2-17
Table 2.11 Self-Reported Outcomes (Annualized Percentages) by Race/Ethnicity	2-18
Table 2.12 Self-Reported Outcomes (Age-Specific Annualized Percentages) by Age at Diagnosis	2-19
 3. Aging	
Table 3.1 Aging Indicators at Start of WHI Extension Study II (2010-Present) by Age.....	3-1
Table 3.2 Aging Indicators Approximately 13 Years Later (September 30, 2023) by Age	3-2
Figure 3.1 Mean Physical Functioning by Visit Year and by Age at Assessment During WHI Extension Study II (2010-Present).....	3-3
Figure 3.2 Mean Activities of Daily Living by Visit Year and by Age at Assessment During WHI Extension Study II (2010-Present).....	3-4
Table 3.3 Availability of Core and Ancillary Measures Among WHI Centenarians by Participation Status	3-5
 4. Long Life Study	
Table 4.1 Participant Characteristics for Long Life Study (LLS) Participants by Race/Ethnicity	4-1
Table 4.2 Current Participation and Vital Status for Long Life Study (LLS) Participants	4-3
Table 4.3 Verified Outcomes (Annualized Percentages) After Long Life Study (LLS) Visit by Race/Ethnicity for LLS Participants.....	4-4
Table 4.4 Verified Outcomes (Annualized Percentages) After Long Life Study (LLS) Visit by Age at Visit for LLS Participants.....	4-5
Table 4.5 Self-Reported Outcomes (Annualized Percentages) After Long Life Study (LLS) Visit by Race/Ethnicity for LLS Participants	4-6
Table 4.6 Self-Reported Outcomes (Annualized Percentages) After Long Life Study (LLS) Visit by Age at Visit for LLS Participants.....	4-7

Table of Contents

Tables	Page
5. Long Life Study 2	
Table 5.1 Long Life Study 2 (LLS2) Consent Status by Recruitment Cohort.....	5-1
Table 5.2 Current Participation and Vital Status for Long Life Study 2 (LLS2) Participants.....	5-2
Table 5.3 Participant Characteristics for Long Life Study 2 (LLS2) Participants by Race/Ethnicity	5-3
Table 5.4 Participant Characteristics for Long Life Study 2 (LLS2) Participants by Recruitment Cohort	5-5
Table 5.5 CBC and Biomarker Results for Long Life Study 2 (LLS2) Participants at the LLS2 Visit by Race/Ethnicity	5-7
Table 5.6 CBC and Biomarker Results for Long Life Study 2 (LLS2) Participants at the LLS2 Visit by Recruitment Cohort	5-9
Table 5.7 Verified Outcomes After Long Life Study 2 (LLS2) Visit for LLS2 Participants	5-11
6. CMS	
Figure 6.1 CMS Enrollment for WHI Participants by Calendar Year	6-1
Table 6.1 Available CMS Follow-Up for WHI Participants	6-2
7. Life and Longevity After Cancer (LILAC) Study	
Table 7.1 Life and Longevity After Cancer (LILAC) Study Participants and Cancer Treatments Received by Cancer Site and Selected Characteristics	7-1
8. Virtual Pooled Registry	
Table 8.1 Status of Virtual Pooled Registry (VPR) Progress	8-1
Figure 8.1 Virtual Pooled Registry (VPR) Process Flow	8-2

I. Overview

Background

Between 1993 and 1998, forty Women's Health Initiative Clinical Centers recruited 161,808 women into the program. Of these, 68,132 women were randomized into the clinical trial component (CT) and 93,676 were enrolled into the observational study (OS) (Figure 1) with semi-annual (CT) or annual (OS) follow-up planned until 2005. During the final year of the original protocol (2004-2005), 115,407 women consented to five additional years of follow-up, representing 76.9% of the 150,076 participants who were alive and in active follow-up at that time. In 2010, participants were again offered the opportunity to continue, and 87% of the 107,706 eligible women agreed (n=93,567).

Additional details on recruitment, re-consenting by age, race/ethnicity and study component have been described in detail in prior reports available on the WHI website. Active follow-up continues for all participants consenting in 2010 unless a participant withdraws consent. Follow-up through proxy respondents is offered whenever needed, with more limited data collection. Passive follow-up through the National Death Index and linkage to Medicare data continues for all participants under the original consent.

The Extension Study

Since 2005, participants have been contacted annually by mail, telephone or more recently email (forms via RedCAP), to obtain health and selected exposure updates. The Clinical Coordinating Center (CCC) conducts annual mailings of follow-up questionnaires to all eligible participants. The Regional Centers (RC) and their collaborating centers contact non-responders and collect and submit medical records for all designated outcomes to the CCC.

In Extension Study II (2010-Present), program streamlining led to a change in outcomes documentation and adjudication.

Since 2010, WHI seeks medical records for designated health events (cardiovascular disease and hip fractures) among only those women in the Medical Records Cohort (MRC), comprised of all former hormone trial (HT) participants and all non-Hispanic Black/African American and Hispanic/Latina participants (Figure 2). WHI funded outcome data collection for the remaining participants, referred to as the Self-Report Cohort (SRC), is limited to self-report, supplemented with linkage to Medicare data, wherever possible, and the National Death

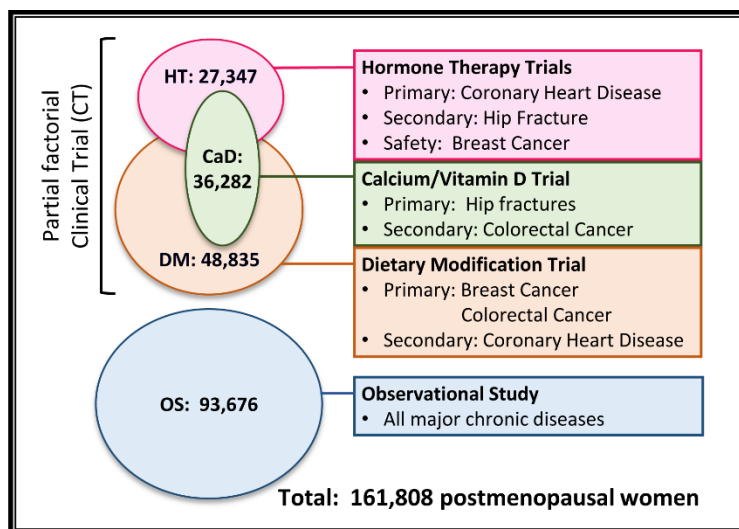


Figure 1. Original design of the WHI clinical trials and observational study, its components and outcomes.

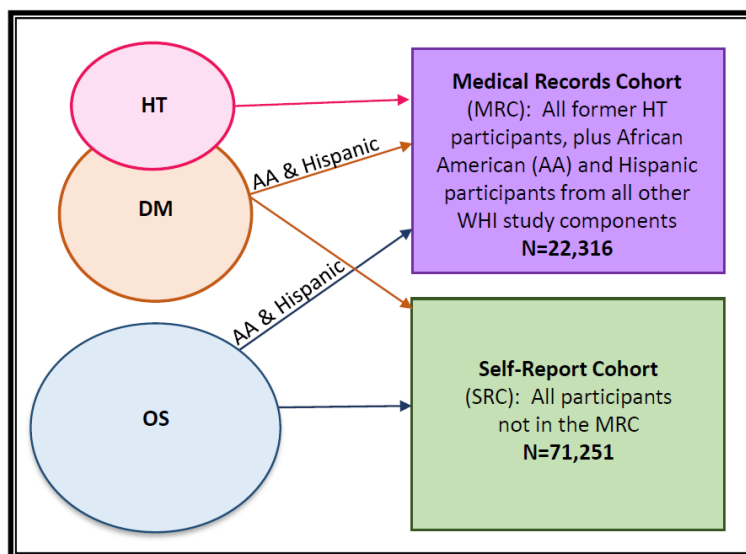


Figure 2. Extension Study II (2010—Present) design reflecting differing levels of outcomes ascertainment: MRC and SRC.

Index (NDI). The two exceptions have been incident stroke and primary cancers, where additional documentation and coding of cases have been supported by NINDS and NCI, respectively. Stroke documentation and adjudication efforts have continued for all participants since February 1, 2021, and retrospective adjudication of SRC stroke cases reported prior to this date are now complete. Since October 2023, NCI supports cancer documentation only through linkage to the National Virtual Pooled Registry (VPR). As a result, cancer cases in SRC participants after June 15, 2023, have not been adjudicated by WHI, except in states not covered by the VPR. Adjudication of new cancer cases continues in the MRC and WHI has now received cancer registry data through the National Virtual Pooled Registry Cancer Linkage System (VPR-CLS) from 34 registries (Section 8). Efforts continue to determine how to best integrate these registry data with the WHI adjudicated cancer outcomes. Other ancillary studies have adjudicated additional outcomes in defined subsets.

As of February 21, 2026, 38,562 women are alive and remain in active follow-up (Tables 1.2 and 1.3). Over one third (n=13,431, 34.8%) of those in active follow-up are 90 years of age or older, including 597 centenarians and 38 women aged 105 or older (Figure 1.1). Among active participants, 1,448 (3.8%) are Hispanic, 2,593 (6.7%) are Black/African American, 933 (2.4%) are Asian, 27 (0.1%) are Native Hawaiian or Pacific Islanders, and 73 (0.2%) are American Indian or Alaska Natives (Table 1.2). Sixty-two percent (n=99,830) of the original cohort are now deceased (Table 1.3), with similar rates across study components.

Follow-up rates to 2025 mailings and telephone follow-up suggest that overall response rates remain high, around 90% for collection of medical history updates (Form 33) and around 70% for questionnaires focused on issues related to participants' daily lives (Tables 1.4 and 1.5). Response rate calculations have changed from previous reports to reflect only those mailings for which the response window has ended.

II. Clinical Outcomes

Tabulations of the designated WHI outcomes, along with annualized event rates, are provided for the cohort overall, by age at event, and by race and ethnicity. For adjudicated outcomes, these displays reflect the person-years at risk during which an event for each participant was subject to adjudication, through September 2010 (CVD and hip fracture) or June 2023 (cancer) for SRC participants or February 21, 2026, for MRC participants. Specific adjudication timeframes are included for reference in the footnotes of each outcomes table. Tabulations by race and ethnicity use the revised definitions of the WHI Race and Ethnicity Task Force rather than those collected at baseline on Form 2. Annualized event rates by age at diagnosis use the same censoring limits on adjudication.

Across all WHI components, we have identified 99,830 deaths (Tables 2.1-2.3). Of these, 71% (n=71,366) were identified only by NDI search. Cardiovascular disease continues to be the leading cause of death, accounting for nearly a third of deaths (n=31,829, 31.9%) and well surpassing cancer deaths (n=20,552, 20.6%). Alzheimer's disease and other dementias were the third leading cause of death, taking 15,010 lives. Accidents or other injuries, including deaths by suicide or homicide, accounted for a small proportion of total deaths (n=2,593, 2.6%). In general, death rates by cause are similar across race and ethnicity groups and increase as expected with increasing attained age.

A new diagnosis of cancer has been adjudicated 38,752 times (Tables 2.4-2.5). Breast (invasive, n=12,372), lung (n=4,883), colorectal (n=3,840), and melanoma (n=2,998) cancers are the most reported, followed by non-Hodgkin's lymphoma (n=2,129), endometrial (n=1,983), pancreatic (n=1,651) and ovarian (n=1,454) cancers. Tabulations by race/ethnicity and age at diagnosis are included.

Adjudicated cardiovascular disease (CVD) continues to represent an increasing fraction of the morbidity and mortality of WHI participants, with 35,804 adjudicated cases during follow-up (Tables 2.6-2.7). Of these, 9,891 participants have had a documented coronary heart disease (CHD) outcome, and a similar number have had selected reperfusion procedures (CABG/PCTA, n=9,403). With the inclusion of retrospective stroke adjudications for SRC participants, strokes have now been adjudicated among 13,748 women.

WHI fracture data reflect a mixture of adjudicated results and self-reported events, as hip fractures continue to be adjudicated among MRC participants (Tables 2.8-2.9). Nearly 45% (n=72,669) of women have reported a fracture during WHI follow-up, including 39,006 osteoporotic fractures and 10,703 hip fractures specifically.

For much of Extension Study II (2010-Present), the number of non-death WHI outcomes has remained relatively constant over time, with reduced numbers of events more recently as the number of participants in active follow-up has decreased (Table 2.10). Deaths have increased year over year until recently, with lower numbers of deaths reported since 2020.

Self-reported outcomes in WHI capture a wide range of age-related conditions (Tables 2.11-2.12). Hypertension (n=65,598, 40.5%), osteoarthritis (n=55,855, 34.5%), and cataracts (n=48,674, 30.1%), are most common among the conditions reported. Over 25% of women (n=30,220) participating in the extension studies reported a new diagnosis of dementia since 2005, when self-reported data on dementia was first collected, with higher rates of dementia with increasing age. Almost 80% (n=24,150) of newly diagnosed dementia cases occurred in women aged 80 or older, with age-specific annualized rates of dementia ranging from 2% to 7% for these older women.

III. Aging

Indicators of aging were assessed at the beginning of Extension Study II (2010-Present), forming a new baseline for comparison on the 93,567 women who consented to this second extension (Table 3.1). Assessed approximately 14 years later in the remaining cohort (n=29,162), using the same instruments, we see clear evidence of the decline in their health status, activities of daily living, independence, and quality of life (Table 3.2). Figures 3.1-3.2 provide visual displays demonstrating both cohort effects (by age in 2010) and the changes over 14 years in physical function (Figure 3.1) and activities of daily living (Figure 3.2).

WHI includes more than 2,700 centenarians (Table 3.3), making it one of the largest and most comprehensively phenotyped centenarian cohorts worldwide. Other longevity studies (New England Centenarian Study, Georgia Centenarian Study, The 90+ Study) have recruited participants only after they reach very old ages. WHI enrolled women at younger ages and they have been followed prospectively; women who lived to be 100 are represented in core and ancillary efforts to collect data on anthropometrics, biomarkers, adjudicated outcomes, medications, functional measures, and genetics (Table 3.3).

IV. Long Life Study

In 2012-13, the WHI Long Life Study (LLS) enrolled 7,875 women in the MRC who took part in a home visit where physical frailty measures and a blood sample were collected (Table 4.1). There are currently 3,156 original LLS participants who continue to be actively followed (Table 4.2). Verified outcomes occurring after the LLS visit are presented by race and ethnicity (Table 4.3) and by age at LLS

study visit (Table 4.4). Since the LLS visit, 2,799 LLS participants have had verified cardiovascular outcomes, 1,171 have had a verified cancer, and 4,293 have died. Self-reported events in this cohort have also been tabulated (Tables 4.5 and 4.6).

V. Long Life Study 2

During 2022-24, the Long Life Study 2 (LLS2) repeated the LLS visit among surviving members of the LLS cohort, cancer survivors from the Life and Longevity After Cancer (LILAC) ancillary study cohort, and a subset of participants from the MRC. At time of recruitment, there were 4,172 LLS participants eligible for consent into LLS2, of whom 53.1% (n=2,214) consented to participate in a second home visit (Table 5.1). Additionally, 2,655 (52.0%) of eligible LILAC participants consented to a home visit. Due to low consent rates in the LLS and LILAC recruitment cohorts, MRC participants were recruited and 2,639 consented to LLS2. Consent and visit completion rates, along with age, race, and ethnicity, have been summarized for each recruitment cohort (Table 5.1). Of the 7,508 participants who consented to participate in LLS2, 5,905 completed a home visit and 93% of these visits had a successful blood draw. Among the 5,905 participants who completed a home visit, 5,344 (90.5%) continue in active follow-up (Table 5.2). Participant characteristics and frailty measures for participants with completed visits have been summarized by race and ethnicity (Table 5.3) and by recruitment cohort (Table 5.4). Complete blood count (CBC) and biomarker results from LLS2 blood draws are similarly reported (Tables 5.5 and 5.6).

Verified outcomes occurring after the LLS2 visit have been tabulated for outcomes with at least 10 events (Table 5.7). Mean follow-up time since this LLS2 visit is 1.8 years; in this time 225 participants have a verified first cardiovascular outcome, 133 have had a verified cancer, and 447 have died.

Several ancillary studies, including the WHISH trial, the LILAC cancer survivorship cohort (PIs: Garnet Anderson, Bette Caan, Electra Paskett), MsLILAC (PI: Hailey Banack), OPACH2 (PIs: Michael LaMonte and Andrea LaCroix), and the Women's Health Initiative Vision Impairment Project (WHI-VIP) (PI: Emily Gower) have leveraged these in-person visits for additional knowledge generation on aging related themes.

VI. Medicare Data

WHI has received access to Medicare claims data for WHI participants from the Centers for Medicare and Medicaid Statistics (CMS) since 2008. WHI currently has Medicare data available from 1991-2023 for Medicare Fee-For-service (FFS) components (Part A and Part B) and from 2006-2023 for Medicare supplemental drug coverage (Part D). During 1991-2023, approximately 146,000 WHI participants were enrolled in Medicare at some point after their enrollment in WHI, with 122,622 participants enrolled in Medicare FFS and 110,149 enrolled in Medicare Part D. Figure 6.1 provides CMS enrollment numbers for WHI participants by year, overall and restricted to participants with active WHI participation. At the start of 2005, almost 80,000 WHI participants were enrolled in Medicare FFS and 75% of those participants maintained continuous enrollment for at least ten years (until the end of 2014) or until their death. Continuous enrollment rates are similarly high for intervals starting in 2010 and 2015 (Table 6.1).

Medicare data is available for analysis by analysts within the WHI Clinical Coordinating Center (WHI-CCC) and more broadly by WHI investigators through the WHI Virtual Data Enclave (VDE).

VII. Data on Cancer Treatment for LILAC Participants

The WHI Life and Longevity After Cancer (LILAC) study extends the original WHI studies to examine survivorship in women diagnosed with cancer during their participation in WHI. WHI participants with one of eight selected cancers (breast, colorectal, endometrial, ovarian (including fallopian tube and primary peritoneal cancers), lung, melanoma, non-Hodgkin lymphoma, and leukemia) were eligible to participate in LILAC if the LILAC-designated cancer was the first centrally adjudicated invasive cancer during WHI follow-up and the participant had no self-reported history of cancer at WHI baseline. Cancer survivors who were still alive and participating in the second extension study were contacted for their consent to participate in LILAC. Deceased women were enrolled under a partial waiver of consent. A small number of women had multiple LILAC-designated cancers diagnosed on the same date, and cancer treatment information was collected for all diagnoses.

In total, LILAC has enrolled 17,128 WHI participants with diagnosis dates ranging from 1994-2022. Detailed information on initial cancer treatment has been assembled using medical record abstraction and data from Medicare claims. These data are finalized and available for use by WHI investigators within the WHI VDE. Of participants with treatment data available, 81% received cancer-directed surgery, 36% received chemotherapy therapy, and 39% received radiation therapy. Cancer treatment by cancer site and participant characteristics have also been tabulated (Table 7.1).

VIII. National Virtual Pooled Registry

As of June 2023, new cancer cases reported in the SRC are no longer being sent for adjudication, although adjudication of cancers in the MRC continues. WHI continues the process of applying for and receiving data from individual cancer registries through the National Virtual Pooled Registry Cancer Linkage System (VPR-CLS). Phase I of this process, which involved applying to use VPR-CLS to link with individual registries and receive aggregate match counts was completed in April 2020 with 48,334 high-quality matches identified. WHI is currently in Phase II, applying to individual registries (and their IRBs) for release of individual level data identified in Phase I. As of March 24, 2026, WHI has received data from 34 registries, containing 41,460 cancer records, with approvals in place for an additional 4 registries and applications in process for 4 registries (Table 8.1). In addition, since WHI completed the Phase I linkage in 2020, two additional registries have joined the VPR and WHI will be applying to these registries for data linkage.

WHI is beginning to evaluate the quality of data from these registries and is comparing registry records to the WHI adjudicated cancer outcomes. Of the VPR records currently received, 77% (n=31,905) of diagnoses occurred while the participant was under active WHI follow-up and 70% (n=29,085) were first occurrences of a WHI outcome during follow-up within the VPR data (Figure 8.1). Additional VPR cancer records with diagnosis dates before WHI enrollment (n=3,354) or after WHI follow-up ended (n=6,189) may provide an opportunity to supplement existing WHI cancer data. Full comparison between the VPR data and the WHI cancer data will be possible once WHI has received data from all participating cancer registries.

IX. Other Program Activities

The WHI program leadership recognizes the importance of drawing in new investigators to use the rich WHI resources, while also providing leadership and growth opportunities for current WHI investigators. The WHI Scientific Interest Groups (SIGs) provide an ongoing opportunity for new investigators to gain an understanding of WHI resources and move towards proposing ancillary studies and manuscripts. This

past year, a new SIG formed to focus on multi-omics data within WHI. WHI continues to hold annual meetings for WHI investigators to meet, network, and share their research; an in-person meeting was held in May 2025 in Seattle, Washington, with a keynote by Dr. Rachel Whitmer (University of California, Davis). The next in-person meeting is planned for May 2026 in Bethesda, Maryland.

In 2014, WHI's annual 'Activities of Daily Life' questionnaires were updated, resulting in a new shorter annual 'Activities of Daily Life' questionnaire (Form 160) combined with a yearly supplemental questionnaire (Form 161 in 2025, Form 162 in 2026, etc.). WHI began mailing Forms 160 and 161 in March 2025 and data from these new forms are now included in the current data freeze. Mailing of the second supplemental questionnaire (Form 162) began in March 2026. The next supplemental questionnaire (Form 163 for 2027) is under development with input from the WHI SIGs and a focus on items of relevance in WHI's aging cohort.

A full listing and status of all proposed manuscripts and ancillary studies is available on the WHI website (www.whi.org). In total, 4,890 manuscript proposals have been approved and 2,573 are published or in press, including 99 publications since last year's report. Investigators using WHI data continue to present high-quality science of broad interest, with manuscripts focused not only on main WHI outcomes like cardiovascular disease and cancer, but also addressing diabetes, multi-omics data, and various aspects of aging. WHI also participates in several consortia, reflecting the collaborative nature of the WHI investigators and the value of WHI data, particularly for rarer exposures and outcomes. In the past year, WHI publications have appeared in high impact journals including *Nature Medicine*, *JAMA Internal Medicine*, *Annals of Internal Medicine*, *Journal of the American Heart Association*, and *Hypertension*, as well as in top aging journals such as *Alzheimer's & Dementia*, *Geroscience*, and *Journals of Gerontology Series A: Biological and Medical Sciences*.

The WHI cohort serves as the backbone for ancillary studies; currently 46 studies continue with active funding, including 2 studies funded in the last year. Many studies make use of the WHI biorepository, which contains more than four million samples of serum, plasma, buffy coat, DNA, RNA, and urine. Papers showing primary results from the WHI Strong and Healthy (WHISH) trial (PIs: Marcia Stefanick, Charles Kooperberg, Andrea LaCroix), which explores the effects of physical activity on cardiovascular conditions and physical function, are in progress with publications expected in 2026. Field work is now complete for the WHI Risk It? Study (PI: Eric Whitsel), which mailed home radon kits to approximately 1,000 WHI participants. A newly funded study (AS747, PI: Amy Millen) will perform metabolomic assays on biospecimens from women who participated in an earlier WHI ancillary study (Carotenoids in Age-Related Eye Disease Study (CAREDS), PI: Julie Mares) to examine prospective associations between the metabolomic signatures of different dietary patterns and the incidence of age-related macular degeneration (AMD).

Harmonized GWAS data are available in dbGaP for approximately 30,000 WHI participants using several approaches, including our participation in the TOPMed program that can be linked to CVD biomarker data, providing an opportunity for outside investigators to use these resources independent of the WHI program. WHI data, including LILAC cancer survivorship data, is also regularly submitted to the NHLBI's BIOLINCC data repository. Imaging data from electrocardiograms (ECGs) given to clinical trial participants at baseline and in years 3, 6, and 9 of the main WHI study have also recently been released on NHLBI's BioData Catalyst platform.

Table 1.1
WHI Centers and Principal Investigators

Clinical Coordinating Center

Principal Investigator	Institution	Location
Garnet Anderson, PhD	Fred Hutchinson Cancer Center	Seattle, WA

Regional Centers

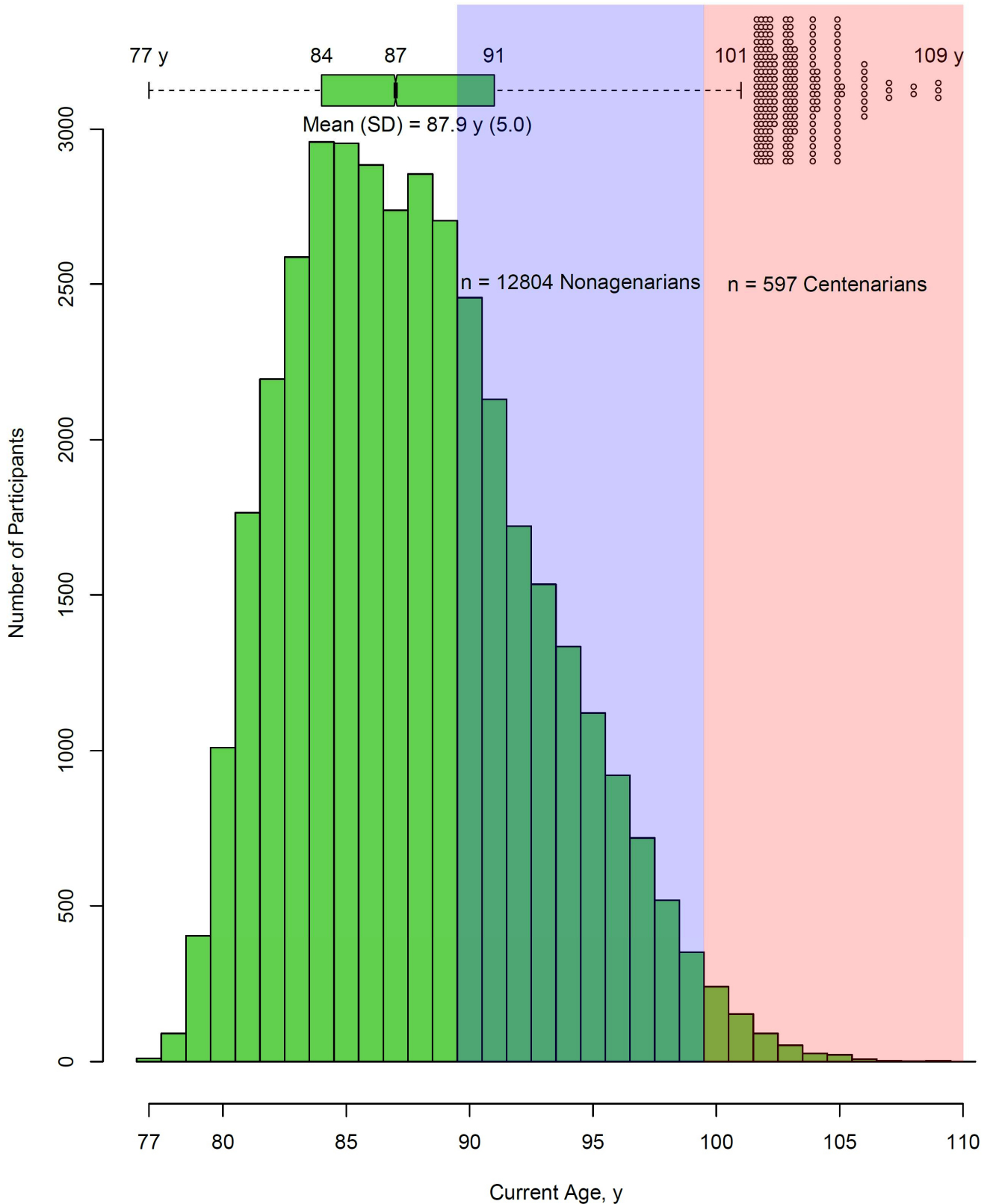
Principal Investigator	Institution	Location
Electra Paskett, PhD	Ohio State University	Columbus, OH
Mara Vitolins, DrPH	Wake Forest University	Winston-Salem/Greensboro, NC
Marcia Stefanick, PhD	Stanford University	Stanford, CA
Jean Wactawski-Wende, PhD	University at Buffalo	Buffalo, NY
Associated Center		
JoAnn Manson, MD DrPH	Brigham and Women's Hospital	Boston, MA

Current WHI Committee Chairs

Investigator	Institution	Committee
Lindsay Reynolds, PhD	Wake Forest University School of Medicine	Chair of SIG Chairs
Karen Johnson, MD MPH	University of Tennessee Health Science Ctr	Ancillary Studies (ASC)
Brian Silver, MD	University of Massachusetts	Outcomes Adjudications (OAC)
Charles Kooperberg, PhD	Fred Hutchinson Cancer Center	Performance Monitoring (PMC)
Amy Millen, PhD	University at Buffalo	Publications and Presentations (P&P)
Lorena Garcia, MPH DrPH	University of California Davis Health	Publications and Presentations (P&P)
Marian Neuhaus, PhD RD	Fred Hutchinson Cancer Center	Steering Committee (SC)

Figure 1.1
Distribution of Current Age for Participants in Active¹ Follow-Up (N = 38,562)

Data as of: February 21, 2026



¹ Active participation is defined as current (Form 33 within 15 months) or recent (Form 33 between 15 and 24 months ago) follow-up.

Table 1.2
Composition of WHI Cohort over Time

Data as of: February 21, 2026

	Enrolled in WHI (N=161,808)		Active ¹ Participation as of 2/21/2026 (N=38,562)					
	N	Mean (SD) or %	MRC		SRC		Total	
			N	Mean (SD) or %	N	Mean (SD) or %	N	Mean (SD) or %
Age²	161808	63.2 (7.2)	8756	87.7 (5.0)	29806	87.9 (4.9)	38562	87.9 (5.0)
50-54	21569	13.3						
55-59	31990	19.8						
60-64	37210	23.0						
65-69	35379	21.9						
70-74	24906	15.4						
75-79	10754	6.6	163	1.9	333	1.1	496	1.3
80-84			2506	28.6	7983	26.8	10489	27.2
85-89			3152	36.0	10994	36.9	14146	36.7
90-94			2013	23.0	7177	24.1	9190	23.8
95-109			922	10.5	3319	11.1	4241	11.0
Ethnicity								
Not Hispanic/Latina	153117	94.6	7519	85.9	29498	99.0	37017	96.0
Hispanic/Latina	7312	4.5	1228	14.0	220	0.7	1448	3.8
Other/Not Reported	1379	0.9	9	0.1	88	0.3	97	0.3
Race								
American Indian/Alaska Native	540	0.3	20	0.2	53	0.2	73	0.2
Asian	4025	2.5	100	1.1	833	2.8	933	2.4
Native Hawaiian/Pacific Islander	137	0.1	11	0.1	16	0.1	27	0.1
Black/African American	14327	8.9	2557	29.2	36	0.1	2593	6.7
White	137628	85.1	5586	63.8	28447	95.4	34033	88.3
More than one Race	1880	1.2	157	1.8	325	1.1	482	1.2
Other/Not Reported	3271	2.0	325	3.7	96	0.3	421	1.1
Education³								
0-8 years	2665	1.7	123	1.4	56	0.2	179	0.5
Some high school	5979	3.7	253	2.9	317	1.1	570	1.5
High school diploma/GED	27624	17.2	1368	15.8	3593	12.1	4961	13.0
School after high school	60909	37.9	3355	38.6	9728	32.9	13083	34.2
College degree or higher	63415	39.5	3584	41.3	15917	53.8	19501	50.9
Income³								
< \$10,000	6937	4.6	299	3.6	248	0.9	547	1.5
\$10,000 – \$19,999	18499	12.3	816	9.8	1120	3.9	1936	5.3
\$20,000 – \$34,999	36665	24.3	1796	21.5	4257	15.0	6053	16.5
\$35,000 – \$49,999	30912	20.5	1825	21.8	5491	19.3	7316	19.9
\$50,000 – \$74,999	29948	19.8	1932	23.1	7428	26.2	9360	25.5
\$75,000 +	27973	18.5	1689	20.2	9849	34.7	11538	31.4
Study Component								
Clinical Trial	68132	42.1	6938	79.2	10179	34.2	17117	44.4
Observational Study	93676	57.9	1818	20.8	19627	65.8	21445	55.6
Medical Records Super Cohort	44174	27.3	8756	100.0			8756	22.7
Self-Report Super Cohort	117634	72.7			29806	100.0	29806	77.3

¹ Active participation is defined as current (Form 33 within 15 months) or recent (Form 33 between 15 and 24 months ago) follow-up.

² Age at WHI Enrollment, and on 02/21/2026.

³ Education and income reported at baseline.

Table 1.3
Participation and Vital Status of WHI Participants by Cohort

Data as of: February 21, 2026

Participation/Vital Status	Total (N=161,808)		CT (N = 68,132)		OS (N = 93,676)		MRC Super Cohort ¹ (N=44,174)		SRC Super Cohort ² (N=117,634)	
	N	%	N	%	N	%	N	%	N	%
Deceased ³	99830	61.7	41392	60.8	58438	62.4	26941	61.0	72889	62.0
Alive: Current Participation ⁴	36672	22.7	16239	23.8	20433	21.8	8264	18.7	28408	24.1
Alive: Recent Participation ⁵	1890	1.2	878	1.3	1012	1.1	492	1.1	1398	1.2
Stopped Follow-Up ⁶	2918	1.8	1352	2.0	1566	1.7	857	1.9	2061	1.8
Lost to Follow-Up ⁷	2108	1.3	988	1.5	1120	1.2	700	1.6	1408	1.2
Did not consent to the WHI Extension Studies and not known to be deceased	18390	11.4	7283	10.7	11107	11.9	6920	15.7	11470	9.8

¹ The MRC Super Cohort includes all WHI Hormone Trial participants and all Non-Hispanic Black/African American and Hispanic/Latina participants (identified from race/ethnicity collected on Form 2 at baseline) from the CT and OS.

² The SRC Super Cohort includes all Non-Hispanic White, American Indian/Alaska Native, Asian/Pacific Islander, and Unknown race/ethnicity participants (identified from race/ethnicity collected on Form 2 at baseline) from the Dietary Modification Trial (not also in the Hormone Trial) and the Observational Study.

³ Includes deaths for non-Extension study participants after the main WHI study close-out.

⁴ Extension Study II (2010-Present) participants who have filled in a Form 33 within the last 15 months.

⁵ Extension Study II (2010-Present) participants who last filled in a Form 33 between 15 and 24 months ago.

⁶ Extension Study II (2010-Present) participants with codes 5 (no follow-up) or 8 (absolutely no follow-up) on Form 7 or 9.

⁷ Extension Study II (2010-Present) participants not in any of the above categories.

Table 1.4
Response Rates to CCC Annual Mailings and Regional Center (RC) Follow-up in 2025¹ by Cohort

Data as of: February 21, 2026

Cohort	Form ²	Eligible for Form Collection	Response			RC Follow-up			Total Response	
			Sent Mail	N	%	Eligible	N	%	N	%
Total	33	42539	39035	29740	76.2	12984	8632	66.5	38372	90.2
	151A	20720	18968	14157	74.6	7005	76	1.1	14233	68.7
	160	17991	16972	13368	78.8	5150	70	1.4	13438	74.7
	161	17988	16969	13309	78.4	5188	90	1.7	13399	74.5
Medical Record Cohort³	33	10165	8943	6049	67.6	4040	2815	69.7	8864	87.2
	151A	4986	4379	3033	69.3	2061	28	1.4	3061	61.4
	160	3919	3563	2551	71.6	1478	31	2.1	2582	65.9
	161	3919	3563	2538	71.2	1486	38	2.6	2576	65.7
Self-Report Cohort⁴	33	32374	30092	23691	78.7	8944	5817	65.0	29508	91.1
	151A	15734	14589	11124	76.2	4944	48	1.0	11172	71.0
	160	14072	13409	10817	80.7	3672	39	1.1	10856	77.1
	161	14069	13406	10771	80.3	3702	52	1.4	10823	76.9

¹ Only includes mailings for which the ±3 month anniversary window ended in 2025.

² Form 33: Medical History Update; Form 151A: Activities of Daily Life; Form 160: Activities of Daily Life; Form 161: Supplemental Questionnaire.

³ The MRC includes all WHI Hormone Trial participants and all Non-Hispanic Black/African American and Hispanic/Latina participants (identified from race/ethnicity collected on Form 2 at baseline) from the CT and OS who consented to WHI Extension Study II (2010-Present).

⁴ The SRC includes all Non-Hispanic White, American Indian/Alaska Native, Asian/Pacific Islander, and Unknown race/ethnicity participants (identified from race/ethnicity collected on Form 2 at baseline) from the Dietary Modification Trial (not also in the Hormone Trial) and the Observational Study who consented to WHI Extension Study II (2010-Present).

Table 1.5
Response Rates to CCC Annual Mailings and Regional Center (RC) Follow-up in 2025¹ by Regional Center

Data as of: February 21, 2026

Regional Center ²	Form ³	Eligible for Form Collection	Response			RC Follow-up			Total Response	
			Sent Mail	N	%	Eligible	N	%	N	%
Boston	33	2892	2589	2045	79.0	766	634	82.8	2679	92.6
	151A	1344	1238	957	77.3	403	5	1.2	962	71.6
	160	1198	1126	929	82.5	287	8	2.8	937	78.2
	161	1197	1125	926	82.3	292	3	1.0	929	77.6
Buffalo	33	8635	7693	5920	77.0	2542	1788	70.3	7708	89.3
	151A	4066	3673	2752	74.9	1382	14	1.0	2766	68.0
	160	3605	3348	2646	79.0	1040	11	1.1	2657	73.7
	161	3605	3348	2633	78.6	1052	13	1.2	2646	73.4
Columbus	33	10725	10222	7829	76.6	3006	1851	61.6	9680	90.3
	151A	5411	5057	3814	75.4	1720	19	1.1	3833	70.8
	160	4489	4320	3426	79.3	1211	2	0.2	3428	76.4
	161	4489	4320	3416	79.1	1217	6	0.5	3422	76.2
Seattle	33	5604	5165	3723	72.1	1857	1375	74.0	5098	91.0
	151A	2716	2434	1701	69.9	1064	20	1.9	1721	63.4
	160	2446	2315	1729	74.7	757	39	5.2	1768	72.3
	161	2445	2314	1714	74.1	760	53	7.0	1767	72.3
Stanford	33	10040	9093	7269	79.9	3123	1869	59.8	9138	91.0
	151A	4892	4476	3451	77.1	1583	6	0.4	3457	70.7
	160	4325	4073	3339	82	1183	3	0.3	3342	77.3
	161	4324	4072	3324	81.6	1190	9	0.8	3333	77.1
Wake Forest	33	4643	4273	2954	69.1	1690	1115	66.0	4069	87.6
	151A	2291	2090	1482	70.9	853	12	1.4	1494	65.2
	160	1928	1790	1299	72.6	672	7	1.0	1306	67.7
	161	1928	1790	1296	72.4	677	6	0.9	1302	67.5

¹ Only includes mailings for which the ±3 month anniversary window ended in 2025.

² Regional Center is determined based on the participant’s responsible clinic at the start of the mailing window (2 months prior to the participant’s mailing anniversary).

³ Form 33: Medical History Update; Form 151A: Activities of Daily Life; Form 160: Activities of Daily Life; Form 161: Supplemental Questionnaire.

Table 2.1
Cause of Death¹ (Annualized Percentages) by Cohort

Data as of: February 21, 2026

	Total	CT	OS	MRC Super Cohort²	SRC Super Cohort³
Number of participants	161808	68132	93676	44174	117634
Mean person years	22.4	22.9	22.0	22.3	22.4
Total death	99830 (2.76%)	41392 (2.66%)	58438 (2.83%)	26941 (2.73%)	72889 (2.76%)
Adjudicated death	96394 (2.66%)	39974 (2.56%)	56420 (2.73%)	26353 (2.67%)	70041 (2.66%)
Centrally adjudicated death	19611 (0.54%)	13936 (0.89%)	5675 (0.27%)	12191 (1.24%)	7420 (0.28%)
Locally adjudicated death (final)	5417 (0.15%)	1 (<0.01%)	5416 (0.26%)	690 (0.07%)	4727 (0.18%)
Identified only by NDI search	71366 (1.97%)	26037 (1.67%)	45329 (2.20%)	13472 (1.37%)	57894 (2.19%)
Not yet adjudicated	568 (0.02%)	458 (0.03%)	110 (0.01%)	568 (0.06%)	0 (0.00%)
Form 120 death ⁴	2868 (0.08%)	960 (0.06%)	1908 (0.09%)	20 (<0.01%)	2848 (0.11%)
Cardiovascular					
Atherosclerotic cardiac	11764 (0.32%)	4997 (0.32%)	6767 (0.33%)	3577 (0.36%)	8187 (0.31%)
Cerebrovascular	7661 (0.21%)	3208 (0.21%)	4453 (0.22%)	2233 (0.23%)	5428 (0.21%)
Pulmonary embolism	399 (0.01%)	194 (0.01%)	205 (0.01%)	140 (0.01%)	259 (0.01%)
Other cardiovascular	11878 (0.33%)	4890 (0.31%)	6988 (0.34%)	3071 (0.31%)	8807 (0.33%)
Unknown cardiovascular	127 (<0.01%)	27 (<0.01%)	100 (<0.01%)	31 (<0.01%)	96 (<0.01%)
Total cardiovascular deaths	31829 (0.88%)	13316 (0.85%)	18513 (0.90%)	9052 (0.92%)	22777 (0.86%)
Cancer					
Brain	511 (0.01%)	221 (0.01%)	290 (0.01%)	104 (0.01%)	407 (0.02%)
Breast	2457 (0.07%)	840 (0.05%)	1617 (0.08%)	616 (0.06%)	1841 (0.07%)
Colorectum	1714 (0.05%)	746 (0.05%)	968 (0.05%)	517 (0.05%)	1197 (0.05%)
Endometrium	350 (0.01%)	147 (0.01%)	203 (0.01%)	72 (0.01%)	278 (0.01%)
Leukemia	974 (0.03%)	416 (0.03%)	558 (0.03%)	231 (0.02%)	743 (0.03%)
Lung	4389 (0.12%)	1924 (0.12%)	2465 (0.12%)	1295 (0.13%)	3094 (0.12%)
Lymphoma, non-Hodgkins	1031 (0.03%)	407 (0.03%)	624 (0.03%)	234 (0.02%)	797 (0.03%)
Melanoma	241 (0.01%)	106 (0.01%)	135 (0.01%)	58 (0.01%)	183 (0.01%)
Multiple myeloma	621 (0.02%)	272 (0.02%)	349 (0.02%)	201 (0.02%)	420 (0.02%)
Ovary	1251 (0.03%)	495 (0.03%)	756 (0.04%)	269 (0.03%)	982 (0.04%)
Pancreas	1902 (0.05%)	828 (0.05%)	1074 (0.05%)	537 (0.05%)	1365 (0.05%)
Uterus	229 (0.01%)	101 (0.01%)	128 (0.01%)	66 (0.01%)	163 (0.01%)
Other cancer site	3971 (0.11%)	1670 (0.11%)	2301 (0.11%)	1057 (0.11%)	2914 (0.11%)
Unknown cancer site	911 (0.03%)	379 (0.02%)	532 (0.03%)	220 (0.02%)	691 (0.03%)
Total cancer deaths	20552 (0.57%)	8552 (0.55%)	12000 (0.58%)	5477 (0.56%)	15075 (0.57%)

¹ Includes deaths for non-Extension study participants after the main WHI study close-out. Annualized rates incorporate additional follow-up from the NDI search.

² The MRC Super Cohort includes all WHI Hormone Trial participants and all Non-Hispanic Black/African American and Hispanic/Latina participants (identified from race/ethnicity collected on Form 2 at baseline) from the CT and OS.

³ The SRC Super Cohort includes all Non-Hispanic White, American Indian/Alaska Native, Asian/Pacific Islander, and Unknown Race/Ethnicity participants (identified from race/ethnicity collected on Form 2 at baseline) from the Dietary Modification Trial (not also in the Hormone Trial) and the Observational Study.

⁴ Includes SRC participants and discovered deaths among non-Extension Study II (2010-Present) participants that occurred during Extension Study II (2010-Present).

Table 2.1 (continued)
Cause of Death¹ (Annualized Percentages) by Cohort

Data as of: February 21, 2026

	Total	CT	OS	MRC Super Cohort²	SRC Super Cohort³
Number of participants	161808	68132	93676	44174	117634
Mean person years	22.4	22.9	22.0	22.3	22.4
Accident/injury					
Homicide	36 (<0.01%)	15 (<0.01%)	21 (<0.01%)	17 (<0.01%)	19 (<0.01%)
Accident	2402 (0.07%)	972 (0.06%)	1430 (0.07%)	564 (0.06%)	1838 (0.07%)
Suicide	84 (<0.01%)	27 (<0.01%)	57 (<0.01%)	18 (<0.01%)	66 (<0.01%)
Other injury	71 (<0.01%)	38 (<0.01%)	33 (<0.01%)	37 (<0.01%)	34 (<0.01%)
Total accident/injury deaths	2593 (0.07%)	1052 (0.07%)	1541 (0.07%)	636 (0.06%)	1957 (0.07%)
Other					
Alzheimer's disease	7538 (0.21%)	3007 (0.19%)	4531 (0.22%)	1872 (0.19%)	5666 (0.21%)
Dementia, not Alzheimer's	7472 (0.21%)	3082 (0.20%)	4390 (0.21%)	1983 (0.20%)	5489 (0.21%)
COPD	3682 (0.10%)	1569 (0.10%)	2113 (0.10%)	986 (0.10%)	2696 (0.10%)
Pneumonia	2122 (0.06%)	927 (0.06%)	1195 (0.06%)	658 (0.07%)	1464 (0.06%)
Pulmonary fibrosis	961 (0.03%)	441 (0.03%)	520 (0.03%)	263 (0.03%)	698 (0.03%)
Renal failure	1708 (0.05%)	736 (0.05%)	972 (0.05%)	624 (0.06%)	1084 (0.04%)
Sepsis	2101 (0.06%)	931 (0.06%)	1170 (0.06%)	700 (0.07%)	1401 (0.05%)
Amyotrophic lateral sclerosis	316 (0.01%)	120 (0.01%)	196 (0.01%)	54 (0.01%)	262 (0.01%)
Parkinson's	1486 (0.04%)	584 (0.04%)	902 (0.04%)	325 (0.03%)	1161 (0.04%)
Hepatic cirrhosis	396 (0.01%)	179 (0.01%)	217 (0.01%)	132 (0.01%)	264 (0.01%)
COVID-19	210 (0.01%)	159 (0.01%)	51 (<0.01%)	172 (0.02%)	38 (<0.01%)
Other known cause	13757 (0.38%)	5358 (0.34%)	8399 (0.41%)	3237 (0.33%)	10520 (0.40%)
Unknown cause	2539 (0.07%)	921 (0.06%)	1618 (0.08%)	202 (0.02%)	2337 (0.09%)
Total other cause deaths	44288 (1.22%)	18014 (1.16%)	26274 (1.27%)	11208 (1.14%)	33080 (1.25%)

¹ Includes deaths for non-Extension study participants after the main WHI study close-out. Annualized rates incorporate additional follow-up from the NDI search.

² The MRC Super Cohort includes all WHI Hormone Trial participants and all Non-Hispanic Black/African American and Hispanic/Latina participants (identified from race/ethnicity collected on Form 2 at baseline) from the CT and OS.

³ The SRC Super Cohort includes all Non-Hispanic White, American Indian/Alaska Native, Asian/Pacific Islander, and Unknown Race/Ethnicity participants (identified from race/ethnicity collected on Form 2 at baseline) from the Dietary Modification Trial (not also in the Hormone Trial) and the Observational Study.

Table 2.2
Cause of Death¹ (Annualized Percentages) by Race/Ethnicity
 Data as of: February 21, 2026

	Total	Race/Ethnicity						
		American Indian/ Alaska Native	Asian or Native Hawaiian/ Other Pacific Islander ²	Hispanic/ Latina	Non-Hispanic Black/African American	Non-Hispanic White	More than one Race	Other/ Not Reported
Number of participants	161808	487	4084	7312	14167	133328	1669	761
Mean person years	22.4	20.6	23.6	23.9	22.2	22.3	23.4	20.2
Total death	99830 (2.76%)	322 (3.21%)	1981 (2.06%)	3397 (1.94%)	8215 (2.62%)	84466 (2.84%)	979 (2.51%)	470 (3.06%)
Adjudicated death	96394 (2.66%)	310 (3.09%)	1928 (2.00%)	3319 (1.90%)	8037 (2.56%)	81403 (2.74%)	937 (2.40%)	460 (3.00%)
Centrally adjudicated death	19611 (0.54%)	51 (0.51%)	206 (0.21%)	928 (0.53%)	2717 (0.87%)	15422 (0.52%)	205 (0.53%)	82 (0.53%)
Locally adjudicated death (final)	5417 (0.15%)	45 (0.45%)	112 (0.12%)	161 (0.09%)	532 (0.17%)	4505 (0.15%)	6 (0.02%)	56 (0.37%)
Identified only by NDI search	71366 (1.97%)	214 (2.13%)	1610 (1.67%)	2230 (1.27%)	4788 (1.52%)	61476 (2.07%)	726 (1.86%)	322 (2.10%)
Not yet adjudicated	568 (0.02%)	5 (0.05%)	3 (<0.01%)	55 (0.03%)	168 (0.05%)	327 (0.01%)	9 (0.02%)	1 (0.01%)
Form 120 death ³	2868 (0.08%)	7 (0.07%)	50 (0.05%)	23 (0.01%)	10 (<0.01%)	2736 (0.09%)	33 (0.08%)	9 (0.06%)
Cardiovascular								
Atherosclerotic cardiac	11764 (0.32%)	45 (0.45%)	217 (0.23%)	387 (0.22%)	1215 (0.39%)	9695 (0.33%)	127 (0.33%)	78 (0.51%)
Cerebrovascular	7661 (0.21%)	21 (0.21%)	178 (0.18%)	291 (0.17%)	694 (0.22%)	6376 (0.21%)	67 (0.17%)	34 (0.22%)
Pulmonary embolism	399 (0.01%)	2 (0.02%)	2 (<0.01%)	11 (0.01%)	52 (0.02%)	326 (0.01%)	5 (0.01%)	1 (0.01%)
Other cardiovascular	11878 (0.33%)	26 (0.26%)	208 (0.22%)	329 (0.19%)	932 (0.30%)	10225 (0.34%)	113 (0.29%)	45 (0.29%)
Unknown cardiovascular	127 (<0.01%)	0 (0.00%)	4 (<0.01%)	1 (<0.01%)	19 (0.01%)	99 (<0.01%)	1 (<0.01%)	3 (0.02%)
Total cardiovascular deaths	31829 (0.88%)	94 (0.94%)	609 (0.63%)	1019 (0.58%)	2912 (0.93%)	26721 (0.90%)	313 (0.80%)	161 (1.05%)
Cancer								
Brain	511 (0.01%)	1 (0.01%)	7 (0.01%)	13 (0.01%)	21 (0.01%)	468 (0.02%)	0 (0.00%)	1 (0.01%)
Breast	2457 (0.07%)	4 (0.04%)	42 (0.04%)	113 (0.06%)	253 (0.08%)	2007 (0.07%)	22 (0.06%)	16 (0.10%)
Colorectum	1714 (0.05%)	10 (0.10%)	40 (0.04%)	60 (0.03%)	184 (0.06%)	1406 (0.05%)	10 (0.03%)	4 (0.03%)
Endometrium	350 (0.01%)	0 (0.00%)	11 (0.01%)	10 (0.01%)	27 (0.01%)	301 (0.01%)	1 (<0.01%)	0 (0.00%)
Leukemia	974 (0.03%)	2 (0.02%)	11 (0.01%)	23 (0.01%)	73 (0.02%)	849 (0.03%)	11 (0.03%)	5 (0.03%)
Lung cancer	4389 (0.12%)	11 (0.11%)	83 (0.09%)	108 (0.06%)	366 (0.12%)	3748 (0.13%)	53 (0.14%)	20 (0.13%)
Lymphoma, non-Hodgkin's	1031 (0.03%)	2 (0.02%)	25 (0.03%)	42 (0.02%)	57 (0.02%)	892 (0.03%)	4 (0.01%)	9 (0.06%)
Melanoma	241 (0.01%)	0 (0.00%)	3 (<0.01%)	8 (<0.01%)	8 (<0.01%)	218 (0.01%)	4 (0.01%)	0 (0.00%)
Multiple myeloma	621 (0.02%)	3 (0.03%)	5 (0.01%)	26 (0.01%)	87 (0.03%)	489 (0.02%)	6 (0.02%)	5 (0.03%)
Ovary	1251 (0.03%)	3 (0.03%)	14 (0.01%)	41 (0.02%)	79 (0.03%)	1092 (0.04%)	10 (0.03%)	12 (0.08%)

¹ Includes deaths for non-Extension Study participants after the main WHI study close-out. Annualized rates incorporate additional follow-up from the NDI search.

² Native Hawaiian/Other Pacific Islander participants (n=119) are combined with Asian participants for reporting purposes due to small numbers.

³ Includes SRC Cohort participants and discovered deaths among non-Extension Study II (2010-Present) participants that occurred during Extension Study II (2010-Present).

Table 2.2 (continued)
Cause of Death¹ (Annualized Percentages) by Race/Ethnicity
 Data as of: February 21, 2026

	Total	Race/Ethnicity							
		American Indian/ Alaska Native	Asian or Native Hawaiian/ Other Pacific Islander ²	Hispanic/ Latina	Non-Hispanic Black/African American	Non-Hispanic White	More than one Race	Other/ Not Reported	
Number of participants	161808	487	4084	7312	14167	133328	1669	761	
Mean person years	22.4	20.6	23.6	23.9	22.2	22.3	23.4	20.2	
Cancer (continued)									
Pancreas	1902 (0.05%)	3 (0.03%)	65 (0.07%)	63 (0.04%)	187 (0.06%)	1555 (0.05%)	19 (0.05%)	10 (0.07%)	
Uterus	229 (0.01%)	2 (0.02%)	8 (0.01%)	8 (<0.01%)	29 (0.01%)	180 (0.01%)	2 (0.01%)	0 (0.00%)	
Other cancer site	3971 (0.11%)	17 (0.17%)	95 (0.10%)	167 (0.10%)	299 (0.10%)	3340 (0.11%)	33 (0.08%)	20 (0.13%)	
Unknown cancer site	911 (0.03%)	1 (0.01%)	24 (0.02%)	21 (0.01%)	74 (0.02%)	777 (0.03%)	7 (0.02%)	7 (0.05%)	
Total cancer deaths	20552 (0.57%)	59 (0.59%)	433 (0.45%)	703 (0.40%)	1744 (0.56%)	17322 (0.58%)	182 (0.47%)	109 (0.71%)	
Accident/injury									
Homicide	36 (<0.01%)	1 (0.01%)	0 (0.00%)	1 (<0.01%)	8 (<0.01%)	26 (<0.01%)	0 (0.00%)	0 (0.00%)	
Accident	2402 (0.07%)	10 (0.10%)	47 (0.05%)	86 (0.05%)	84 (0.03%)	2150 (0.07%)	17 (0.04%)	8 (0.05%)	
Suicide	84 (<0.01%)	0 (0.00%)	3 (<0.01%)	5 (<0.01%)	1 (<0.01%)	75 (<0.01%)	0 (0.00%)	0 (0.00%)	
Other injury	71 (<0.01%)	0 (0.00%)	1 (<0.01%)	8 (<0.01%)	2 (<0.01%)	60 (<0.01%)	0 (0.00%)	0 (0.00%)	
Total accident/ injury deaths	2593 (0.07%)	11 (0.11%)	51 (0.05%)	100 (0.06%)	95 (0.03%)	2311 (0.08%)	17 (0.04%)	8 (0.05%)	
Other									
Alzheimer's disease	7538 (0.21%)	19 (0.19%)	157 (0.16%)	298 (0.17%)	475 (0.15%)	6503 (0.22%)	60 (0.15%)	26 (0.17%)	
Dementia, not Alzheimer's	7472 (0.21%)	18 (0.18%)	180 (0.19%)	196 (0.11%)	514 (0.16%)	6456 (0.22%)	79 (0.20%)	29 (0.19%)	
COPD	3682 (0.10%)	13 (0.13%)	24 (0.02%)	80 (0.05%)	190 (0.06%)	3316 (0.11%)	44 (0.11%)	15 (0.10%)	
Pneumonia	2122 (0.06%)	10 (0.10%)	68 (0.07%)	76 (0.04%)	145 (0.05%)	1793 (0.06%)	18 (0.05%)	12 (0.08%)	
Pulmonary fibrosis	961 (0.03%)	1 (0.01%)	27 (0.03%)	55 (0.03%)	46 (0.01%)	816 (0.03%)	11 (0.03%)	5 (0.03%)	
Renal failure	1708 (0.05%)	15 (0.15%)	31 (0.03%)	86 (0.05%)	292 (0.09%)	1262 (0.04%)	17 (0.04%)	5 (0.03%)	
Sepsis	2101 (0.06%)	8 (0.08%)	21 (0.02%)	65 (0.04%)	245 (0.08%)	1718 (0.06%)	26 (0.07%)	18 (0.12%)	
Amyotrophic lateral sclerosis	316 (0.01%)	2 (0.02%)	3 (<0.01%)	5 (<0.01%)	23 (0.01%)	278 (0.01%)	5 (0.01%)	0 (0.00%)	
Parkinson's	1486 (0.04%)	4 (0.04%)	34 (0.04%)	51 (0.03%)	65 (0.02%)	1312 (0.04%)	14 (0.04%)	6 (0.04%)	
Hepatic cirrhosis	396 (0.01%)	5 (0.05%)	10 (0.01%)	45 (0.03%)	25 (0.01%)	306 (0.01%)	5 (0.01%)	0 (0.00%)	
COVID-19	210 (0.01%)	0 (0.00%)	2 (<0.01%)	23 (0.01%)	50 (0.02%)	133 (<0.01%)	2 (0.01%)	0 (0.00%)	
Other known cause	13757 (0.38%)	50 (0.50%)	279 (0.29%)	499 (0.29%)	1170 (0.37%)	11543 (0.39%)	151 (0.39%)	65 (0.42%)	
Unknown cause	2539 (0.07%)	8 (0.08%)	49 (0.05%)	41 (0.02%)	56 (0.02%)	2349 (0.08%)	26 (0.07%)	10 (0.07%)	
Total other cause deaths	44288 (1.22%)	153 (1.52%)	885 (0.92%)	1520 (0.87%)	3296 (1.05%)	37785 (1.27%)	458 (1.17%)	191 (1.25%)	

¹ Includes deaths for non-Extension Study participants after the main WHI study close-out. Annualized rates incorporate additional follow-up from the NDI search.

² Native Hawaiian/Other Pacific Islander participants (n=119) are combined with Asian participants for reporting purposes due to small numbers.

Table 2.3
Cause of Death¹ (Age-Specific Annualized Percentages²) by Age at Death

Data as of: February 21, 2026

	Age at Death								
	50-59	60-64	65-69	70-74	75-79	80-84	85-89	≥90	
Number of participants³	50947	87534	122005	144974	150803	137074	99576	52729	
Mean person years³	4.3	3.9	4.2	4.5	4.6	4.4	3.8	4.1	
Total death	441 (0.20%)	1265 (0.37%)	2906 (0.56%)	6098 (0.93%)	11932 (1.70%)	19397 (3.24%)	25425 (6.67%)	32366 (15.11%)	
Adjudicated death	441 (0.20%)	1264 (0.37%)	2903 (0.56%)	6072 (0.93%)	11835 (1.69%)	18950 (3.16%)	24518 (6.43%)	30411 (14.19%)	
Centrally adjudicated death	171 (0.08%)	528 (0.15%)	1274 (0.25%)	2264 (0.35%)	3413 (0.49%)	4349 (0.73%)	4051 (1.06%)	3561 (1.66%)	
Locally adjudicated death (final)	222 (0.10%)	482 (0.14%)	808 (0.16%)	1174 (0.18%)	1418 (0.20%)	1045 (0.17%)	268 (0.07%)	0 (0.00%)	
Identified only by NDI search	48 (0.02%)	254 (0.07%)	821 (0.16%)	2634 (0.40%)	7004 (1.00%)	13556 (2.26%)	20199 (5.30%)	26850 (12.53%)	
Not yet adjudicated	0 (0.00%)	0 (0.00%)	0 (0.00%)	1 (<0.01%)	15 (<0.01%)	73 (0.01%)	164 (0.04%)	315 (0.15%)	
Form 120 death ⁴	0 (0.00%)	1 (<0.01%)	3 (<0.01%)	25 (<0.01%)	82 (0.01%)	374 (0.06%)	743 (0.19%)	1640 (0.77%)	
Cardiovascular									
Atherosclerotic cardiac	51 (0.02%)	135 (0.04%)	328 (0.06%)	792 (0.12%)	1409 (0.20%)	2308 (0.38%)	3027 (0.79%)	3714 (1.73%)	
Cerebrovascular	20 (0.01%)	50 (0.01%)	146 (0.03%)	364 (0.06%)	838 (0.12%)	1443 (0.24%)	2111 (0.55%)	2689 (1.25%)	
Pulmonary embolism	3 (<0.01%)	13 (<0.01%)	22 (<0.01%)	46 (0.01%)	67 (0.01%)	92 (0.02%)	95 (0.02%)	61 (0.03%)	
Other cardiovascular	21 (0.01%)	75 (0.02%)	170 (0.03%)	366 (0.06%)	967 (0.14%)	1881 (0.31%)	3128 (0.82%)	5270 (2.46%)	
Unknown cardiovascular	3 (<0.01%)	11 (<0.01%)	16 (<0.01%)	21 (<0.01%)	24 (<0.01%)	38 (0.01%)	13 (<0.01%)	1 (<0.01%)	
Total cardiovascular deaths	98 (0.05%)	284 (0.08%)	682 (0.13%)	1589 (0.24%)	3305 (0.47%)	5762 (0.96%)	8374 (2.20%)	11735 (5.48%)	
Cancer									
Brain	12 (0.01%)	23 (0.01%)	55 (0.01%)	104 (0.02%)	109 (0.02%)	111 (0.02%)	62 (0.02%)	35 (0.02%)	
Breast	59 (0.03%)	123 (0.04%)	226 (0.04%)	290 (0.04%)	462 (0.07%)	494 (0.08%)	449 (0.12%)	354 (0.17%)	
Colorectum	16 (0.01%)	62 (0.02%)	118 (0.02%)	212 (0.03%)	289 (0.04%)	334 (0.06%)	368 (0.10%)	315 (0.15%)	
Endometrium	3 (<0.01%)	12 (<0.01%)	30 (0.01%)	55 (0.01%)	69 (0.01%)	73 (0.01%)	67 (0.02%)	41 (0.02%)	
Leukemia	7 (<0.01%)	22 (0.01%)	68 (0.01%)	111 (0.02%)	188 (0.03%)	202 (0.03%)	208 (0.05%)	168 (0.08%)	
Lung cancer	46 (0.02%)	144 (0.04%)	353 (0.07%)	689 (0.11%)	981 (0.14%)	997 (0.17%)	719 (0.19%)	460 (0.21%)	
Lymphoma, non-Hodgkin's	6 (<0.01%)	25 (0.01%)	65 (0.01%)	115 (0.02%)	193 (0.03%)	247 (0.04%)	235 (0.06%)	145 (0.07%)	
Melanoma	1 (<0.01%)	15 (<0.01%)	20 (<0.01%)	35 (0.01%)	42 (0.01%)	53 (0.01%)	51 (0.01%)	24 (0.01%)	
Multiple myeloma	3 (<0.01%)	14 (<0.01%)	35 (0.01%)	78 (0.01%)	129 (0.02%)	160 (0.03%)	134 (0.04%)	68 (0.03%)	
Ovary	22 (0.01%)	51 (0.01%)	118 (0.02%)	213 (0.03%)	277 (0.04%)	284 (0.05%)	186 (0.05%)	100 (0.05%)	

¹ Includes deaths for non-Extension Study participants after the main WHI study close-out. Annualized rates incorporate additional follow-up from the NDI search.

² Age specific annualized percentages are calculated as the number with an event in the age interval divided by the total person years of all participants with time in the interval.

³ Number of participants or mean person years in the age interval for all participants with any follow-up time in the age interval.

⁴ Includes SRC Cohort participants and discovered deaths among non-Extension Study II (2010-Present) participants that occurred during Extension Study II (2010-Present).

Table 2.3 (continued)
Cause of Death¹ (Age-Specific Annualized Percentages²) by Age at Death

Data as of: February 21, 2026

	Age at Death								
	50-59	60-64	65-69	70-74	75-79	80-84	85-89	≥90	
Number of participants³	50947	87534	122005	144974	150803	137074	99576	52729	
Mean person years³	4.3	3.9	4.2	4.5	4.6	4.4	3.8	4.1	
Cancer (continued)									
Pancreas	19 (0.01%)	56 (0.02%)	125 (0.02%)	248 (0.04%)	378 (0.05%)	475 (0.08%)	376 (0.10%)	225 (0.11%)	
Uterus	1 (<0.01%)	6 (<0.01%)	23 (<0.01%)	26 (<0.01%)	44 (0.01%)	57 (0.01%)	38 (0.01%)	34 (0.02%)	
Other cancer site	36 (0.02%)	94 (0.03%)	261 (0.05%)	491 (0.08%)	772 (0.11%)	893 (0.15%)	812 (0.21%)	612 (0.29%)	
Unknown cancer site	9 (<0.01%)	28 (0.01%)	50 (0.01%)	108 (0.02%)	146 (0.02%)	186 (0.03%)	216 (0.06%)	168 (0.08%)	
Total cancer deaths	240 (0.11%)	675 (0.20%)	1547 (0.30%)	2775 (0.43%)	4079 (0.58%)	4566 (0.76%)	3921 (1.03%)	2749 (1.28%)	
Accident/injury									
Homicide	1 (<0.01%)	5 (<0.01%)	8 (<0.01%)	4 (<0.01%)	7 (<0.01%)	3 (<0.01%)	8 (<0.01%)	0 (0.00%)	
Accident	19 (0.01%)	48 (0.01%)	69 (0.01%)	123 (0.02%)	254 (0.04%)	480 (0.08%)	628 (0.16%)	781 (0.36%)	
Suicide	11 (0.01%)	9 (<0.01%)	16 (<0.01%)	11 (<0.01%)	17 (<0.01%)	9 (<0.01%)	8 (<0.01%)	3 (<0.01%)	
Other injury	0 (0.00%)	7 (<0.01%)	5 (<0.01%)	5 (<0.01%)	10 (<0.01%)	16 (<0.01%)	13 (<0.01%)	15 (0.01%)	
Total accident/ injury deaths	31 (0.01%)	69 (0.02%)	98 (0.02%)	143 (0.02%)	288 (0.04%)	508 (0.08%)	657 (0.17%)	799 (0.37%)	
Other									
Alzheimer's disease	0 (0.00%)	6 (<0.01%)	15 (<0.01%)	88 (0.01%)	474 (0.07%)	1389 (0.23%)	2341 (0.61%)	3225 (1.51%)	
Dementia, not Alzheimer's	0 (0.00%)	3 (<0.01%)	15 (<0.01%)	89 (0.01%)	393 (0.06%)	1170 (0.20%)	2163 (0.57%)	3639 (1.70%)	
COPD	1 (<0.01%)	27 (0.01%)	72 (0.01%)	226 (0.03%)	549 (0.08%)	821 (0.14%)	972 (0.25%)	1014 (0.47%)	
Pneumonia	3 (<0.01%)	11 (<0.01%)	48 (0.01%)	95 (0.01%)	241 (0.03%)	448 (0.07%)	603 (0.16%)	673 (0.31%)	
Pulmonary fibrosis	5 (<0.01%)	10 (<0.01%)	23 (<0.01%)	68 (0.01%)	170 (0.02%)	217 (0.04%)	278 (0.07%)	190 (0.09%)	
Renal failure	5 (<0.01%)	15 (<0.01%)	33 (0.01%)	85 (0.01%)	227 (0.03%)	357 (0.06%)	443 (0.12%)	543 (0.25%)	
Sepsis	5 (<0.01%)	21 (0.01%)	59 (0.01%)	121 (0.02%)	288 (0.04%)	482 (0.08%)	572 (0.15%)	553 (0.26%)	
Amyotrophic lateral sclerosis	0 (0.00%)	13 (<0.01%)	33 (0.01%)	59 (0.01%)	86 (0.01%)	84 (0.01%)	30 (0.01%)	11 (0.01%)	
Parkinson's	1 (<0.01%)	1 (<0.01%)	13 (<0.01%)	46 (0.01%)	176 (0.03%)	386 (0.06%)	493 (0.13%)	370 (0.17%)	
Hepatic cirrhosis	9 (<0.01%)	18 (0.01%)	27 (0.01%)	61 (0.01%)	88 (0.01%)	91 (0.02%)	72 (0.02%)	30 (0.01%)	
COVID-19	0 (0.00%)	0 (0.00%)	0 (0.00%)	2 (<0.01%)	15 (<0.01%)	45 (0.01%)	61 (0.02%)	87 (0.04%)	
Other known cause	41 (0.02%)	96 (0.03%)	221 (0.04%)	617 (0.09%)	1440 (0.21%)	2671 (0.45%)	3665 (0.96%)	5006 (2.34%)	
Unknown cause	2 (<0.01%)	16 (<0.01%)	20 (<0.01%)	33 (0.01%)	98 (0.01%)	327 (0.05%)	616 (0.16%)	1427 (0.67%)	
Total other cause deaths	72 (0.03%)	237 (0.07%)	579 (0.11%)	1590 (0.24%)	4245 (0.61%)	8488 (1.42%)	12309 (3.23%)	16768 (7.83%)	

¹ Includes deaths for non-Extension Study participants after the main WHI study close-out. Annualized rates incorporate additional follow-up from the NDI search.

² Age specific annualized percentages are calculated as the number with an event in the age interval divided by the total person years of all participants with time in the interval.

³ Number of participants or mean person years in the age interval for all participants with any follow-up time in the age interval.

Table 2.4
Verified Cancers¹ (Annualized Percentages) by Race/Ethnicity

Data as of: February 21, 2026

	Total	Race/Ethnicity						
		American Indian/ Alaska Native	Asian or Native Hawaiian/ Other Pacific Islander ²	Hispanic/ Latina	Non-Hispanic Black/African American	Non-Hispanic White	More than one Race	Other/ Not Reported
Number of participants	161808	487	4084	7312	14167	133328	1669	761
Mean person years	18.2	13.9	16.1	15.2	15.4	18.8	19.1	12.8
Total cancer	38752 (1.50%)	87 (1.41%)	676 (1.15%)	1040 (1.01%)	2551 (1.27%)	33913 (1.56%)	341 (1.20%)	144 (1.65%)
Accessory sinus	16 (<0.01%)	0 (0.00%)	0 (0.00%)	0 (0.00%)	1 (<0.01%)	15 (<0.01%)	0 (0.00%)	0 (0.00%)
Adrenal gland	19 (<0.01%)	0 (0.00%)	0 (0.00%)	1 (<0.01%)	2 (<0.01%)	16 (<0.01%)	0 (0.00%)	0 (0.00%)
Anus	153 (0.01%)	0 (0.00%)	2 (<0.01%)	6 (0.01%)	14 (0.01%)	131 (0.01%)	0 (0.00%)	0 (0.00%)
Appendix	54 (<0.01%)	0 (0.00%)	0 (0.00%)	3 (<0.01%)	4 (<0.01%)	46 (<0.01%)	0 (0.00%)	1 (0.01%)
Base of tongue	41 (<0.01%)	0 (0.00%)	0 (0.00%)	2 (<0.01%)	0 (0.00%)	38 (<0.01%)	0 (0.00%)	1 (0.01%)
Biliary tract, parts of	225 (0.01%)	1 (0.01%)	3 (<0.01%)	16 (0.01%)	17 (0.01%)	185 (0.01%)	2 (0.01%)	1 (0.01%)
Bladder	1238 (0.04%)	1 (0.01%)	11 (0.02%)	21 (0.02%)	77 (0.04%)	1113 (0.05%)	13 (0.04%)	2 (0.02%)
Bones/joints/articular cartilage (limbs)	13 (<0.01%)	1 (0.02%)	1 (<0.01%)	0 (0.00%)	0 (0.00%)	11 (<0.01%)	0 (0.00%)	0 (0.00%)
Bones/joints/articular cartilage (other)	33 (<0.01%)	0 (0.00%)	0 (0.00%)	0 (0.00%)	0 (0.00%)	31 (<0.01%)	1 (<0.01%)	1 (0.01%)
Brain	454 (0.02%)	1 (0.01%)	6 (0.01%)	7 (0.01%)	14 (0.01%)	425 (0.02%)	0 (0.00%)	1 (0.01%)
Breast	14689 (0.54%)	27 (0.42%)	292 (0.48%)	425 (0.40%)	1016 (0.49%)	12750 (0.55%)	134 (0.45%)	45 (0.49%)
Invasive breast	12372 (0.45%)	24 (0.37%)	233 (0.38%)	348 (0.32%)	821 (0.39%)	10791 (0.46%)	117 (0.39%)	38 (0.41%)
In situ breast	2609 (0.09%)	4 (0.06%)	63 (0.10%)	86 (0.08%)	224 (0.10%)	2204 (0.09%)	20 (0.06%)	8 (0.08%)
Central nervous system (excludes brain)	7 (<0.01%)	0 (0.00%)	0 (0.00%)	0 (0.00%)	0 (0.00%)	7 (<0.01%)	0 (0.00%)	0 (0.00%)
Cervix	153 (0.01%)	0 (0.00%)	2 (<0.01%)	6 (0.01%)	22 (0.01%)	120 (<0.01%)	3 (0.01%)	0 (0.00%)
Colorectum	3840 (0.13%)	10 (0.15%)	67 (0.11%)	111 (0.10%)	323 (0.15%)	3283 (0.14%)	33 (0.11%)	13 (0.14%)
Connective/subcutaneous/ soft tissues	239 (0.01%)	0 (0.00%)	7 (0.01%)	5 (<0.01%)	10 (<0.01%)	211 (0.01%)	5 (0.02%)	1 (0.01%)
Endocrine glands, related structures	5 (<0.01%)	0 (0.00%)	0 (0.00%)	0 (0.00%)	0 (0.00%)	5 (<0.01%)	0 (0.00%)	0 (0.00%)
Endometrium ³	1983 (0.12%)	3 (0.09%)	26 (0.06%)	50 (0.08%)	100 (0.10%)	1790 (0.12%)	10 (0.06%)	4 (0.07%)
Esophagus	230 (0.01%)	1 (0.02%)	1 (<0.01%)	4 (<0.01%)	10 (<0.01%)	210 (0.01%)	3 (0.01%)	1 (0.01%)
Eye and adnexa	87 (<0.01%)	0 (0.00%)	0 (0.00%)	3 (<0.01%)	0 (0.00%)	82 (<0.01%)	2 (0.01%)	0 (0.00%)

¹ Cancers are no longer adjudicated for SRC participants after 6/15/2023; cancer follow-up time for SRC participants is censored as of 6/15/2023.

² Native Hawaiian/Other Pacific Islander participants (n=119) are combined with Asian participants for reporting purposes due to small numbers.

³ Only women without a baseline hysterectomy are used to compute the annual rates of endometrial and uterine cancer.

Table 2.4 (continued)
Verified Cancers¹ (Annualized Percentages) by Race/Ethnicity

Data as of: February 21, 2026

	Total	Race/Ethnicity						
		American Indian/ Alaska Native	Asian or Native Hawaiian/ Other Pacific Islander ²	Hispanic/ Latina	Non-Hispanic Black/African American	Non-Hispanic White	More than one Race	Other/ Not Reported
Number of participants	161808	487	4084	7312	14167	133328	1669	761
Mean person years	18.2	13.9	16.1	15.2	15.4	18.8	19.1	12.8
Floor of Mouth	21 (<0.01%)	0 (0.00%)	1 (<0.01%)	1 (<0.01%)	2 (<0.01%)	16 (<0.01%)	0 (0.00%)	1 (0.01%)
Gallbladder	175 (0.01%)	0 (0.00%)	1 (<0.01%)	10 (0.01%)	13 (0.01%)	148 (0.01%)	3 (0.01%)	0 (0.00%)
Genital organs	194 (0.01%)	0 (0.00%)	4 (0.01%)	6 (0.01%)	6 (<0.01%)	177 (0.01%)	0 (0.00%)	1 (0.01%)
Gum	57 (<0.01%)	0 (0.00%)	1 (<0.01%)	3 (<0.01%)	2 (<0.01%)	51 (<0.01%)	0 (0.00%)	0 (0.00%)
Heart	47 (<0.01%)	0 (0.00%)	0 (0.00%)	1 (<0.01%)	0 (0.00%)	46 (<0.01%)	0 (0.00%)	0 (0.00%)
Kidney	876 (0.03%)	7 (0.11%)	14 (0.02%)	25 (0.02%)	71 (0.03%)	747 (0.03%)	8 (0.03%)	4 (0.04%)
Larynx	58 (<0.01%)	0 (0.00%)	0 (0.00%)	1 (<0.01%)	6 (<0.01%)	51 (<0.01%)	0 (0.00%)	0 (0.00%)
Leukemia	1422 (0.05%)	2 (0.03%)	19 (0.03%)	31 (0.03%)	77 (0.04%)	1270 (0.05%)	16 (0.05%)	7 (0.07%)
Liver	435 (0.02%)	4 (0.06%)	20 (0.03%)	24 (0.02%)	38 (0.02%)	342 (0.01%)	3 (0.01%)	4 (0.04%)
Lung	4883 (0.17%)	12 (0.18%)	71 (0.11%)	99 (0.09%)	334 (0.15%)	4299 (0.18%)	47 (0.15%)	21 (0.22%)
Lymph nodes	5 (<0.01%)	0 (0.00%)	0 (0.00%)	0 (0.00%)	0 (0.00%)	5 (<0.01%)	0 (0.00%)	0 (0.00%)
Lymphoma, Hodgkin's	88 (<0.01%)	0 (0.00%)	1 (<0.01%)	9 (0.01%)	5 (<0.01%)	71 (<0.01%)	1 (<0.01%)	1 (0.01%)
Lymphoma, non-Hodgkin's	2129 (0.07%)	2 (0.03%)	42 (0.07%)	69 (0.06%)	79 (0.04%)	1919 (0.08%)	9 (0.03%)	9 (0.09%)
Melanoma of the skin	2998 (0.11%)	2 (0.03%)	7 (0.01%)	26 (0.02%)	10 (<0.01%)	2929 (0.12%)	18 (0.06%)	6 (0.06%)
Meninges	9 (<0.01%)	0 (0.00%)	0 (0.00%)	0 (0.00%)	0 (0.00%)	9 (<0.01%)	0 (0.00%)	0 (0.00%)
Multiple myeloma	752 (0.03%)	3 (0.05%)	5 (0.01%)	28 (0.03%)	96 (0.04%)	608 (0.02%)	8 (0.03%)	4 (0.04%)
Mycosis fungoides	33 (<0.01%)	0 (0.00%)	0 (0.00%)	0 (0.00%)	4 (<0.01%)	29 (<0.01%)	0 (0.00%)	0 (0.00%)
Nasal cavity mid ear	23 (<0.01%)	0 (0.00%)	0 (0.00%)	2 (<0.01%)	0 (0.00%)	21 (<0.01%)	0 (0.00%)	0 (0.00%)
Oral (mouth)	48 (<0.01%)	0 (0.00%)	0 (0.00%)	2 (<0.01%)	2 (<0.01%)	44 (<0.01%)	0 (0.00%)	0 (0.00%)
Other digestive	81 (<0.01%)	0 (0.00%)	0 (0.00%)	1 (<0.01%)	4 (<0.01%)	75 (<0.01%)	0 (0.00%)	1 (0.01%)
Other lip	18 (<0.01%)	0 (0.00%)	0 (0.00%)	0 (0.00%)	1 (<0.01%)	17 (<0.01%)	0 (0.00%)	0 (0.00%)
Ovary	1454 (0.05%)	5 (0.08%)	18 (0.03%)	43 (0.04%)	81 (0.04%)	1285 (0.05%)	11 (0.04%)	11 (0.12%)
Palate	39 (<0.01%)	0 (0.00%)	1 (<0.01%)	0 (0.00%)	1 (<0.01%)	37 (<0.01%)	0 (0.00%)	0 (0.00%)
Pancreas	1651 (0.06%)	2 (0.03%)	45 (0.07%)	41 (0.04%)	147 (0.07%)	1390 (0.06%)	19 (0.06%)	7 (0.07%)
Parotid gland (Stensen's duct)	77 (<0.01%)	0 (0.00%)	2 (<0.01%)	1 (<0.01%)	8 (<0.01%)	66 (<0.01%)	0 (0.00%)	0 (0.00%)

¹ Cancers are no longer adjudicated for SRC participants after 6/15/2023; cancer follow-up time for SRC participants is censored as of 6/15/2023.

² Native Hawaiian/Other Pacific Islander participants (n=119) are combined with Asian participants for reporting purposes due to small numbers.

Table 2.4 (continued)
Verified Cancers¹ (Annualized Percentages) by Race/Ethnicity

Data as of: February 21, 2026

	Total	Race/Ethnicity						
		American Indian/ Alaska Native	Asian or Native Hawaiian/ Other Pacific Islander ²	Hispanic/ Latina	Non-Hispanic Black/African American	Non-Hispanic White	More than one Race	Other/ Not Reported
Number of participants	161808	487	4084	7312	14167	133328	1669	761
Mean person years	18.2	13.9	16.1	15.2	15.4	18.8	19.1	12.8
Peripheral nerves and autonomic nervous system	2 (<0.01%)	0 (0.00%)	0 (0.00%)	0 (0.00%)	0 (0.00%)	2 (<0.01%)	0 (0.00%)	0 (0.00%)
Peritoneum	250 (0.01%)	1 (0.02%)	3 (<0.01%)	9 (0.01%)	15 (0.01%)	219 (0.01%)	2 (0.01%)	1 (0.01%)
Pharynx	35 (<0.01%)	0 (0.00%)	1 (<0.01%)	0 (0.00%)	3 (<0.01%)	31 (<0.01%)	0 (0.00%)	0 (0.00%)
Pyriform sinus	2 (<0.01%)	0 (0.00%)	0 (0.00%)	0 (0.00%)	0 (0.00%)	2 (<0.01%)	0 (0.00%)	0 (0.00%)
Renal pelvis	153 (0.01%)	0 (0.00%)	2 (<0.01%)	2 (<0.01%)	10 (<0.01%)	137 (0.01%)	1 (<0.01%)	1 (0.01%)
Respiratory system, intrathoracic, other	3 (<0.01%)	0 (0.00%)	0 (0.00%)	0 (0.00%)	0 (0.00%)	3 (<0.01%)	0 (0.00%)	0 (0.00%)
Salivary glands, major (other/unspecified)	21 (<0.01%)	0 (0.00%)	0 (0.00%)	0 (0.00%)	1 (<0.01%)	20 (<0.01%)	0 (0.00%)	0 (0.00%)
Small intestine	188 (0.01%)	0 (0.00%)	4 (0.01%)	5 (<0.01%)	16 (0.01%)	161 (0.01%)	2 (0.01%)	0 (0.00%)
Stomach	372 (0.01%)	0 (0.00%)	17 (0.03%)	15 (0.01%)	50 (0.02%)	280 (0.01%)	8 (0.03%)	2 (0.02%)
Thymus	15 (<0.01%)	0 (0.00%)	1 (<0.01%)	0 (0.00%)	0 (0.00%)	13 (<0.01%)	1 (<0.01%)	0 (0.00%)
Thyroid	539 (0.02%)	0 (0.00%)	8 (0.01%)	17 (0.02%)	38 (0.02%)	473 (0.02%)	3 (0.01%)	0 (0.00%)
Tongue, part of (other/unspecified)	105 (<0.01%)	0 (0.00%)	3 (<0.01%)	0 (0.00%)	2 (<0.01%)	97 (<0.01%)	2 (0.01%)	1 (0.01%)
Tonsil	26 (<0.01%)	0 (0.00%)	0 (0.00%)	0 (0.00%)	2 (<0.01%)	23 (<0.01%)	1 (<0.01%)	0 (0.00%)
Trachea	1 (<0.01%)	0 (0.00%)	0 (0.00%)	0 (0.00%)	1 (<0.01%)	0 (0.00%)	0 (0.00%)	0 (0.00%)
Ureter	100 (<0.01%)	1 (0.01%)	3 (<0.01%)	2 (<0.01%)	2 (<0.01%)	90 (<0.01%)	2 (0.01%)	0 (0.00%)
Urinary organs (other/unspecified)	43 (<0.01%)	1 (0.01%)	2 (<0.01%)	2 (<0.01%)	4 (<0.01%)	33 (<0.01%)	1 (<0.01%)	0 (0.00%)
Uterus, not otherwise specified ³	165 (0.01%)	1 (0.03%)	5 (0.01%)	5 (0.01%)	18 (0.02%)	135 (0.01%)	1 (0.01%)	0 (0.00%)
Vagina	58 (<0.01%)	1 (0.01%)	1 (<0.01%)	1 (<0.01%)	4 (<0.01%)	50 (<0.01%)	1 (<0.01%)	0 (0.00%)
Vulva	216 (0.01%)	0 (0.00%)	2 (<0.01%)	13 (0.01%)	15 (0.01%)	184 (0.01%)	2 (0.01%)	0 (0.00%)
Other/unknown site	1673 (0.06%)	9 (0.14%)	36 (0.06%)	34 (0.03%)	103 (0.05%)	1470 (0.06%)	10 (0.03%)	11 (0.12%)

¹ Cancers are no longer adjudicated for SRC participants after 6/15/2023; cancer follow-up time for SRC participants is censored as of 6/15/2023.

² Native Hawaiian/Other Pacific Islander participants (n=119) are combined with Asian participants for reporting purposes due to small numbers.

³ Only women without a baseline hysterectomy are used to compute the annual rates of endometrial and uterine cancer.

Table 2.5
Verified Cancers¹ (Age-Specific Annualized Percentages²) by Age at Diagnosis

Data as of: February 21, 2026

	Age at Diagnosis							
	50-59	60-64	65-69	70-74	75-79	80-84	85-89	≥90
Number of participants³	50943	85384	113871	128401	125596	105870	71679	36057
Mean person years³	4.1	3.7	4.0	4.3	4.4	4.2	3.7	4.0
Total cancer	1698 (0.82%)	3366 (1.10%)	5634 (1.32%)	7883 (1.58%)	8300 (1.71%)	6390 (1.78%)	3681 (1.84%)	1800 (1.78%)
Accessory sinus	0 (0.00%)	0 (0.00%)	1 (<0.01%)	5 (<0.01%)	3 (<0.01%)	4 (<0.01%)	2 (<0.01%)	1 (<0.01%)
Adrenal gland	2 (<0.01%)	5 (<0.01%)	2 (<0.01%)	3 (<0.01%)	3 (<0.01%)	1 (<0.01%)	1 (<0.01%)	2 (<0.01%)
Anus	1 (<0.01%)	7 (<0.01%)	13 (<0.01%)	29 (0.01%)	42 (0.01%)	37 (0.01%)	14 (0.01%)	10 (0.01%)
Appendix	0 (0.00%)	5 (<0.01%)	5 (<0.01%)	12 (<0.01%)	9 (<0.01%)	14 (<0.01%)	8 (<0.01%)	1 (<0.01%)
Base of tongue	1 (<0.01%)	6 (<0.01%)	4 (<0.01%)	5 (<0.01%)	8 (<0.01%)	14 (<0.01%)	1 (<0.01%)	2 (<0.01%)
Biliary tract, parts of	2 (<0.01%)	12 (<0.01%)	25 (0.01%)	48 (0.01%)	53 (0.01%)	50 (0.01%)	26 (0.01%)	9 (0.01%)
Bladder	33 (0.02%)	73 (0.02%)	109 (0.02%)	206 (0.04%)	277 (0.05%)	261 (0.06%)	170 (0.07%)	109 (0.09%)
Bones/joints/articular cartilage (limbs)	1 (<0.01%)	1 (<0.01%)	3 (<0.01%)	2 (<0.01%)	3 (<0.01%)	3 (<0.01%)	0 (0.00%)	0 (0.00%)
Bones/joints/articular cartilage (other)	1 (<0.01%)	0 (0.00%)	3 (<0.01%)	6 (<0.01%)	7 (<0.01%)	6 (<0.01%)	6 (<0.01%)	4 (<0.01%)
Brain	15 (0.01%)	31 (0.01%)	63 (0.01%)	96 (0.02%)	88 (0.02%)	88 (0.02%)	42 (0.02%)	31 (0.03%)
Breast	903 (0.43%)	1651 (0.53%)	2474 (0.56%)	3193 (0.61%)	3146 (0.61%)	2041 (0.52%)	936 (0.42%)	345 (0.31%)
Invasive breast	721 (0.34%)	1341 (0.43%)	1989 (0.45%)	2629 (0.50%)	2672 (0.51%)	1795 (0.45%)	876 (0.39%)	349 (0.30%)
In situ breast	187 (0.09%)	323 (0.10%)	506 (0.11%)	616 (0.11%)	553 (0.10%)	314 (0.07%)	89 (0.04%)	21 (0.02%)
Central nervous system (excludes brain)	0 (0.00%)	0 (0.00%)	1 (<0.01%)	2 (<0.01%)	1 (<0.01%)	1 (<0.01%)	1 (<0.01%)	1 (<0.01%)
Cervix	18 (0.01%)	24 (0.01%)	16 (<0.01%)	21 (<0.01%)	29 (0.01%)	25 (0.01%)	10 (<0.01%)	10 (0.01%)
Colorectum	111 (0.05%)	258 (0.08%)	481 (0.11%)	723 (0.13%)	783 (0.14%)	708 (0.17%)	489 (0.20%)	287 (0.24%)
Connective/subcutaneous/soft tissues	10 (<0.01%)	15 (<0.01%)	24 (0.01%)	37 (0.01%)	45 (0.01%)	50 (0.01%)	32 (0.01%)	26 (0.02%)
Endocrine glands, related structures	0 (0.00%)	0 (0.00%)	1 (<0.01%)	2 (<0.01%)	0 (0.00%)	2 (<0.01%)	0 (0.00%)	0 (0.00%)
Endometrium ⁴	97 (0.08%)	205 (0.11%)	371 (0.14%)	440 (0.14%)	408 (0.13%)	290 (0.12%)	118 (0.08%)	54 (0.08%)
Esophagus	3 (<0.01%)	12 (<0.01%)	21 (<0.01%)	30 (0.01%)	51 (0.01%)	48 (0.01%)	44 (0.02%)	21 (0.02%)
Eye and adnexa	5 (<0.01%)	3 (<0.01%)	17 (<0.01%)	21 (<0.01%)	17 (<0.01%)	13 (<0.01%)	7 (<0.01%)	4 (<0.01%)

¹ Cancers are no longer adjudicated for SRC participants after 6/15/2023; cancer follow-up time for SRC participants is censored as of 6/15/2023.

² Age specific annualized percentages are calculated as the number with an event in the age interval divided by the total person years of all participants with time in the interval.

³ Number of participants or mean person years in the age interval for all participants with any follow-up time in the age interval.

⁴ Only women without a baseline hysterectomy are used to compute the annual rates of endometrial and uterine cancer.

Table 2.5 (continued)
Verified Cancers¹ (Age-Specific Annualized Percentages²) by Age at Diagnosis

Data as of: February 21, 2026

	Age at Diagnosis							
	50-59	60-64	65-69	70-74	75-79	80-84	85-89	≥90
Number of participants³	50943	85384	113871	128401	125596	105870	71679	36057
Mean person years³	4.1	3.7	4.0	4.3	4.4	4.2	3.7	4.0
Floor of Mouth	2 (<0.01%)	1 (<0.01%)	3 (<0.01%)	4 (<0.01%)	2 (<0.01%)	3 (<0.01%)	4 (<0.01%)	2 (<0.01%)
Gallbladder	2 (<0.01%)	5 (<0.01%)	16 (<0.01%)	32 (0.01%)	36 (0.01%)	48 (0.01%)	24 (0.01%)	12 (0.01%)
Genital organs	5 (<0.01%)	12 (<0.01%)	20 (<0.01%)	32 (0.01%)	40 (0.01%)	51 (0.01%)	26 (0.01%)	8 (0.01%)
Gum	0 (0.00%)	3 (<0.01%)	4 (<0.01%)	9 (<0.01%)	17 (<0.01%)	10 (<0.01%)	9 (<0.01%)	5 (<0.01%)
Heart	0 (0.00%)	1 (<0.01%)	5 (<0.01%)	10 (<0.01%)	9 (<0.01%)	10 (<0.01%)	8 (<0.01%)	4 (<0.01%)
Kidney	27 (0.01%)	65 (0.02%)	110 (0.02%)	152 (0.03%)	222 (0.04%)	164 (0.04%)	86 (0.04%)	50 (0.04%)
Larynx	2 (<0.01%)	10 (<0.01%)	10 (<0.01%)	8 (<0.01%)	11 (<0.01%)	6 (<0.01%)	10 (<0.01%)	1 (<0.01%)
Leukemia	20 (0.01%)	69 (0.02%)	176 (0.04%)	235 (0.04%)	301 (0.05%)	274 (0.06%)	216 (0.09%)	131 (0.11%)
Liver	4 (<0.01%)	16 (0.01%)	26 (0.01%)	68 (0.01%)	90 (0.02%)	92 (0.02%)	92 (0.04%)	47 (0.04%)
Lung	89 (0.04%)	257 (0.08%)	552 (0.12%)	929 (0.17%)	1153 (0.21%)	992 (0.23%)	604 (0.25%)	307 (0.25%)
Lymph nodes	0 (0.00%)	0 (0.00%)	1 (<0.01%)	2 (<0.01%)	0 (0.00%)	0 (0.00%)	0 (0.00%)	2 (<0.01%)
Lymphoma, Hodgkin's	2 (<0.01%)	5 (<0.01%)	12 (<0.01%)	17 (<0.01%)	21 (<0.01%)	18 (<0.01%)	11 (<0.01%)	2 (<0.01%)
Lymphoma, non-Hodgkin's	51 (0.02%)	122 (0.04%)	253 (0.06%)	413 (0.08%)	486 (0.09%)	406 (0.10%)	283 (0.12%)	115 (0.09%)
Melanoma of the skin	127 (0.06%)	220 (0.07%)	402 (0.09%)	576 (0.11%)	706 (0.13%)	514 (0.12%)	328 (0.14%)	125 (0.10%)
Meninges	0 (0.00%)	0 (0.00%)	0 (0.00%)	2 (<0.01%)	2 (<0.01%)	2 (<0.01%)	2 (<0.01%)	1 (<0.01%)
Multiple myeloma	16 (0.01%)	29 (0.01%)	84 (0.02%)	151 (0.03%)	167 (0.03%)	174 (0.04%)	95 (0.04%)	36 (0.03%)
Mycosis fungoides	7 (<0.01%)	3 (<0.01%)	3 (<0.01%)	6 (<0.01%)	4 (<0.01%)	4 (<0.01%)	5 (<0.01%)	1 (<0.01%)
Nasal cavity mid ear	0 (0.00%)	0 (0.00%)	2 (<0.01%)	4 (<0.01%)	8 (<0.01%)	5 (<0.01%)	1 (<0.01%)	3 (<0.01%)
Oral (mouth)	1 (<0.01%)	1 (<0.01%)	3 (<0.01%)	8 (<0.01%)	9 (<0.01%)	7 (<0.01%)	9 (<0.01%)	10 (0.01%)
Other digestive	0 (0.00%)	0 (0.00%)	4 (<0.01%)	8 (<0.01%)	17 (<0.01%)	20 (<0.01%)	16 (0.01%)	16 (0.01%)
Other lip	0 (0.00%)	0 (0.00%)	3 (<0.01%)	2 (<0.01%)	2 (<0.01%)	4 (<0.01%)	2 (<0.01%)	5 (<0.01%)
Ovary	61 (0.03%)	124 (0.04%)	244 (0.05%)	291 (0.05%)	283 (0.05%)	234 (0.05%)	153 (0.06%)	64 (0.05%)
Palate	2 (<0.01%)	1 (<0.01%)	5 (<0.01%)	6 (<0.01%)	7 (<0.01%)	12 (<0.01%)	3 (<0.01%)	3 (<0.01%)
Pancreas	26 (0.01%)	68 (0.02%)	138 (0.03%)	240 (0.04%)	343 (0.06%)	382 (0.09%)	295 (0.12%)	159 (0.13%)
Parotid gland (Stensen's duct)	0 (0.00%)	7 (<0.01%)	11 (<0.01%)	17 (<0.01%)	21 (<0.01%)	13 (<0.01%)	7 (<0.01%)	1 (<0.01%)

¹ Cancers are no longer adjudicated for SRC participants after 6/15/2023; cancer follow-up time for SRC participants is censored as of 6/15/2023.

² Age specific annualized percentages are calculated as the number with an event in the age interval divided by the total person years of all participants with time in the interval.

³ Number of participants or mean person years in the age interval for all participants with any follow-up time in the age interval.

Table 2.5 (continued)
Verified Cancers¹ (Age-Specific Annualized Percentages²) by Age at Diagnosis

Data as of: February 21, 2026

	Age at Diagnosis							
	50-59	60-64	65-69	70-74	75-79	80-84	85-89	≥90
Number of participants³	50943	85384	113871	128401	125596	105870	71679	36057
Mean person years³	4.1	3.7	4.0	4.3	4.4	4.2	3.7	4.0
Peripheral nerves and autonomic nervous system	0 (0.00%)	0 (0.00%)	0 (0.00%)	2 (<0.01%)	0 (0.00%)	0 (0.00%)	0 (0.00%)	0 (0.00%)
Peritoneum	7 (<0.01%)	14 (<0.01%)	36 (0.01%)	65 (0.01%)	49 (0.01%)	48 (0.01%)	27 (0.01%)	4 (<0.01%)
Pharynx	1 (<0.01%)	1 (<0.01%)	5 (<0.01%)	9 (<0.01%)	2 (<0.01%)	8 (<0.01%)	5 (<0.01%)	4 (<0.01%)
Pyriiform sinus	0 (0.00%)	0 (0.00%)	2 (<0.01%)	0 (0.00%)	0 (0.00%)	0 (0.00%)	0 (0.00%)	0 (0.00%)
Renal pelvis	5 (<0.01%)	6 (<0.01%)	15 (<0.01%)	23 (<0.01%)	35 (0.01%)	45 (0.01%)	16 (0.01%)	8 (0.01%)
Respiratory system, intrathoracic, other	0 (0.00%)	0 (0.00%)	2 (<0.01%)	0 (0.00%)	1 (<0.01%)	0 (0.00%)	0 (0.00%)	0 (0.00%)
Salivary glands, major (other/unspecified)	2 (<0.01%)	2 (<0.01%)	0 (0.00%)	7 (<0.01%)	2 (<0.01%)	4 (<0.01%)	1 (<0.01%)	3 (<0.01%)
Small intestine	4 (<0.01%)	8 (<0.01%)	27 (0.01%)	30 (0.01%)	46 (0.01%)	37 (0.01%)	25 (0.01%)	11 (0.01%)
Stomach	7 (<0.01%)	22 (0.01%)	28 (0.01%)	65 (0.01%)	86 (0.02%)	84 (0.02%)	50 (0.02%)	30 (0.02%)
Thymus	0 (0.00%)	1 (<0.01%)	3 (<0.01%)	1 (<0.01%)	5 (<0.01%)	4 (<0.01%)	0 (0.00%)	1 (<0.01%)
Thyroid	28 (0.01%)	65 (0.02%)	91 (0.02%)	130 (0.02%)	120 (0.02%)	69 (0.02%)	26 (0.01%)	10 (0.01%)
Tongue, part of (other/unspecified)	6 (<0.01%)	3 (<0.01%)	10 (<0.01%)	23 (<0.01%)	22 (<0.01%)	17 (<0.01%)	18 (0.01%)	6 (<0.01%)
Tonsil	2 (<0.01%)	0 (0.00%)	3 (<0.01%)	6 (<0.01%)	6 (<0.01%)	3 (<0.01%)	4 (<0.01%)	2 (<0.01%)
Trachea	0 (0.00%)	0 (0.00%)	0 (0.00%)	1 (<0.01%)	0 (0.00%)	0 (0.00%)	0 (0.00%)	0 (0.00%)
Ureter	2 (<0.01%)	4 (<0.01%)	5 (<0.01%)	18 (<0.01%)	30 (0.01%)	19 (<0.01%)	15 (0.01%)	7 (0.01%)
Urinary organs (other/unspecified)	2 (<0.01%)	2 (<0.01%)	4 (<0.01%)	6 (<0.01%)	8 (<0.01%)	13 (<0.01%)	6 (<0.01%)	2 (<0.01%)
Uterus, not otherwise specified ⁴	1 (<0.01%)	4 (<0.01%)	15 (0.01%)	21 (0.01%)	32 (0.01%)	41 (0.02%)	22 (0.02%)	29 (0.04%)
Vagina	0 (0.00%)	2 (<0.01%)	9 (<0.01%)	4 (<0.01%)	16 (<0.01%)	14 (<0.01%)	10 (<0.01%)	3 (<0.01%)
Vulva	11 (0.01%)	11 (<0.01%)	23 (0.01%)	42 (0.01%)	39 (0.01%)	46 (0.01%)	28 (0.01%)	16 (0.01%)
Other/unknown site	27 (0.01%)	71 (0.02%)	122 (0.03%)	268 (0.05%)	298 (0.05%)	319 (0.07%)	319 (0.13%)	249 (0.20%)

¹ Cancers are no longer adjudicated for SRC participants after 6/15/2023; cancer follow-up time for SRC participants is censored as of 6/15/2023.

² Age specific annualized percentages are calculated as the number with an event in the age interval divided by the total person years of all participants with time in the interval.

³ Number of participants or mean person years in the age interval for all participants with any follow-up time in the age interval.

⁴ Only women without a baseline hysterectomy are used to compute the annual rates of endometrial and uterine cancer.

Table 2.6
Verified Cardiovascular Outcomes (Annualized Percentages) by Race/Ethnicity

Data as of: February 21, 2026

	Total	Race/Ethnicity						
		American Indian/ Alaska Native	Asian or Native Hawaiian/ Other Pacific Islander ¹	Hispanic/ Latina	Non-Hispanic Black/African American	Non-Hispanic White	More than one Race	Other/ Not Reported
Number of participants	161808	487	4084	7312	14167	133328	1669	761
Mean person years	18.2	13.9	16.1	15.2	15.4	18.8	19.1	12.8
Cardiovascular outcomes²								
CHD	9891 (0.47%)	30 (0.58%)	132 (0.29%)	365 (0.35%)	1220 (0.57%)	7996 (0.47%)	100 (0.42%)	48 (0.63%)
CHD death ³	4211 (0.20%)	16 (0.30%)	50 (0.11%)	157 (0.15%)	702 (0.32%)	3206 (0.18%)	46 (0.19%)	34 (0.44%)
Clinical MI	6862 (0.33%)	20 (0.39%)	98 (0.21%)	250 (0.24%)	686 (0.32%)	5713 (0.33%)	67 (0.28%)	28 (0.37%)
Angina ⁴	5247 (0.41%)	26 (0.75%)	70 (0.22%)	187 (0.34%)	534 (0.50%)	4356 (0.41%)	51 (0.38%)	23 (0.44%)
CABG/PTCA	9403 (0.45%)	26 (0.51%)	103 (0.22%)	354 (0.35%)	785 (0.37%)	8018 (0.48%)	86 (0.37%)	31 (0.41%)
Carotid artery disease	1665 (0.08%)	10 (0.19%)	13 (0.03%)	39 (0.04%)	104 (0.05%)	1474 (0.09%)	17 (0.07%)	8 (0.10%)
Heart failure ⁵	3847 (0.53%)	11 (0.70%)	25 (0.29%)	246 (0.26%)	957 (0.45%)	2538 (0.63%)	57 (0.56%)	13 (0.55%)
Recurrent heart failure ⁶	1278 (9.53%)	5 (10.84%)	3 (3.30%)	64 (6.84%)	320 (9.02%)	863 (10.09%)	19 (10.00%)	4 (8.42%)
Stroke ⁷	13748 (0.48%)	38 (0.57%)	224 (0.35%)	391 (0.36%)	1105 (0.52%)	11801 (0.48%)	132 (0.42%)	57 (0.60%)
PAD	1746 (0.08%)	6 (0.11%)	17 (0.04%)	49 (0.05%)	271 (0.13%)	1375 (0.08%)	23 (0.10%)	5 (0.07%)
DVT ⁸	1628 (0.22%)	7 (0.45%)	2 (0.02%)	110 (0.12%)	446 (0.21%)	1038 (0.26%)	19 (0.19%)	6 (0.26%)
Pulmonary embolism ⁸	1334 (0.18%)	5 (0.31%)	3 (0.03%)	66 (0.07%)	413 (0.19%)	825 (0.20%)	16 (0.16%)	6 (0.25%)
DVT/PE ⁸	2379 (0.33%)	10 (0.65%)	4 (0.05%)	148 (0.16%)	703 (0.33%)	1475 (0.37%)	30 (0.30%)	9 (0.39%)
Aortic aneurysm ⁹	96 (0.04%)	0 (0.00%)	2 (0.07%)	6 (0.02%)	25 (0.04%)	59 (0.04%)	4 (0.11%)	0 (0.00%)
Valvular heart disease ⁹	749 (0.31%)	0 (0.00%)	4 (0.14%)	71 (0.24%)	102 (0.15%)	559 (0.40%)	10 (0.28%)	3 (0.40%)
Total cardiovascular disease¹⁰	35804 (1.77%)	109 (2.27%)	487 (1.07%)	1299 (1.32%)	3995 (2.07%)	29380 (1.78%)	380 (1.70%)	154 (2.13%)

¹ Native Hawaiian/Other Pacific Islander participants (n=119) are combined with Asian participants for reporting purposes due to small numbers.

² Cardiovascular events are adjudicated through 2010 for SRC Super Cohort participants and through the present for MRC Super Cohort participants and SRC Super Cohort strokes. To calculate annualized event rates, person-years at risk are limited to the time intervals during which events for each participant were subject to adjudication.

³ "CHD death" includes definite and possible CHD death.

⁴ Angina is not a verified outcome in the WHI Extension Studies. Reported counts and event rates are limited to participation during the original program (1993-2005).

⁵ Definite or possible decompensated heart failure adjudicated by UNC.

⁶ Recurrent definite or possible decompensated heart failure adjudicated by UNC among participants with a first event.

⁷ Retroactive adjudications for stroke cases among SRC participants between October 1, 2010 and January 31, 2021 are now complete and are now included in these data. Stroke is adjudicated for all WHI participants throughout the full WHI follow-up.

⁸ DVT and PE are only adjudicated and reported for MRC Super Cohort participants.

⁹ Aortic aneurysm and valvular heart disease are new adjudicated outcomes during WHI Extension Study II (2010-Present). To calculate annualized event rates, person-years at risk are limited to MRC participants with time during Extension Study II (2010-Present).

¹⁰ Total CVD does not include aortic aneurysm or valvular heart disease.

Table 2.7
Verified Cardiovascular Outcomes (Age-Specific Annualized Percentages¹) by Age at Diagnosis

Data as of: February 21, 2026

	Age at Diagnosis							
	50-59	60-64	65-69	70-74	75-79	80-84	85-89	≥90
Number of participants²	50943	85384	113871	128401	125596	105872	71681	36058
Mean person years²	4.1	3.7	4.0	4.3	4.4	4.2	3.7	4.0
Cardiovascular Outcomes³								
CHD	220 (0.10%)	551 (0.17%)	1157 (0.26%)	1791 (0.37%)	2216 (0.54%)	1996 (0.77%)	1206 (1.08%)	754 (1.77%)
CHD death ⁴	49 (0.02%)	124 (0.04%)	273 (0.06%)	542 (0.11%)	789 (0.19%)	954 (0.35%)	795 (0.68%)	685 (1.50%)
Clinical MI	180 (0.09%)	451 (0.14%)	950 (0.21%)	1397 (0.29%)	1668 (0.41%)	1317 (0.51%)	654 (0.59%)	245 (0.57%)
Angina ⁵	349 (0.17%)	702 (0.26%)	1181 (0.41%)	1435 (0.55%)	1115 (0.63%)	425 (0.63%)	40 (0.50%)	0 (0.00%)
CABG/PTCA	286 (0.14%)	789 (0.25%)	1678 (0.38%)	2393 (0.50%)	2378 (0.59%)	1372 (0.54%)	435 (0.40%)	72 (0.17%)
Carotid artery disease	52 (0.02%)	109 (0.03%)	270 (0.06%)	463 (0.09%)	427 (0.10%)	262 (0.10%)	71 (0.06%)	11 (0.02%)
Heart failure ⁶	70 (0.11%)	150 (0.17%)	259 (0.22%)	494 (0.36%)	700 (0.53%)	855 (0.85%)	751 (1.32%)	568 (1.94%)
Recurrent heart failure ⁷	18 (12.20%)	28 (6.51%)	70 (8.14%)	126 (8.15%)	225 (9.05%)	298 (9.52%)	293 (10.72%)	220 (10.61%)
Stroke ⁸	136 (0.06%)	355 (0.11%)	835 (0.19%)	1661 (0.31%)	2535 (0.46%)	2969 (0.69%)	2718 (1.07%)	2539 (1.90%)
PAD	40 (0.02%)	102 (0.03%)	247 (0.05%)	369 (0.08%)	455 (0.11%)	354 (0.13%)	128 (0.11%)	51 (0.11%)
DVT ⁹	37 (0.06%)	82 (0.09%)	196 (0.16%)	275 (0.20%)	347 (0.26%)	338 (0.33%)	215 (0.37%)	138 (0.45%)
Pulmonary embolism ⁹	27 (0.04%)	60 (0.07%)	139 (0.11%)	239 (0.17%)	294 (0.22%)	268 (0.26%)	206 (0.35%)	101 (0.32%)
DVT/PE ⁹	51 (0.08%)	115 (0.13%)	270 (0.22%)	417 (0.31%)	521 (0.40%)	473 (0.47%)	335 (0.58%)	197 (0.66%)
Aortic aneurysm ¹⁰	-- --	0 (0.00%)	1 (0.01%)	6 (0.02%)	18 (0.03%)	38 (0.06%)	21 (0.04%)	12 (0.04%)
Valvular heart disease ¹⁰	-- --	0 (0.00%)	8 (0.08%)	39 (0.12%)	128 (0.22%)	220 (0.34%)	219 (0.45%)	135 (0.45%)
Total cardiovascular disease¹¹	937 (0.45%)	2177 (0.70%)	4347 (1.01%)	6619 (1.45%)	7598 (2.02%)	6462 (2.81%)	4271 (4.47%)	3393 (8.71%)

¹ Age specific annualized percentages are calculated as the number with an event in the age interval divided by the total person years of all participants with time in the interval.

² Number of participants or mean person years in the age interval for all participants with any follow-up time in the age interval.

³ Cardiovascular events are adjudicated through 2010 for SRC Super Cohort participants and through the present for MRC Super Cohort participants and SRC Super Cohort strokes. To calculate annualized event rates, person-years at risk are limited to the time intervals during which events for each participant were subject to adjudication.

⁴ "CHD death" includes definite and possible CHD death.

⁵ Angina is not a verified outcome in the WHI Extension Studies. Reported counts and event rates are limited to participation during the original program (1993-2005).

⁶ Definite or possible decompensated heart failure adjudicated by UNC.

⁷ Recurrent definite or possible decompensated heart failure adjudicated by UNC among participants with a first event.

⁸ Retroactive adjudications for stroke cases among SRC participants between October 1, 2010 and January 31, 2021 are now complete and are now included in these data. Stroke is adjudicated for all WHI participants throughout the full WHI follow-up.

⁹ DVT and PE are only adjudicated and reported for MRC Super Cohort participants.

¹⁰ Aortic aneurysm and valvular heart disease are new adjudicated outcomes during WHI Extension Study II (2010-Present). To calculate annualized event rates, person-years at risk are limited to MRC participants with time during Extension Study II (2010-Present).

¹¹ Total CVD does not include aortic aneurysm or valvular heart disease.

Table 2.8
Fracture Outcomes (Annualized Percentages) by Race/Ethnicity

Data as of: February 21, 2026

	Total	Race/Ethnicity						
		American Indian/ Alaska Native	Asian or Native Hawaiian/ Other Pacific Islander ¹	Hispanic/ Latina	Non-Hispanic Black/African American	Non-Hispanic White	More than one Race	Other/ Not Reported
Number of participants	161808	487	4084	7312	14167	133328	1669	761
Mean person years	18.2	13.9	16.0	15.2	15.3	18.8	19.1	12.7
Fracture site²								
Elbow	3476 (0.12%)	7 (0.10%)	40 (0.06%)	109 (0.10%)	103 (0.05%)	3179 (0.13%)	29 (0.09%)	9 (0.09%)
Foot	10080 (0.36%)	24 (0.37%)	131 (0.21%)	282 (0.26%)	499 (0.24%)	8997 (0.38%)	118 (0.39%)	29 (0.31%)
Hand	3057 (0.10%)	6 (0.09%)	40 (0.06%)	128 (0.12%)	124 (0.06%)	2717 (0.11%)	32 (0.10%)	10 (0.10%)
Hip	10703 (0.37%)	12 (0.18%)	115 (0.18%)	169 (0.15%)	198 (0.09%)	10072 (0.41%)	108 (0.34%)	29 (0.30%)
Knee	5039 (0.17%)	19 (0.29%)	126 (0.20%)	238 (0.22%)	268 (0.12%)	4305 (0.17%)	64 (0.20%)	19 (0.20%)
Lower arm	15572 (0.56%)	34 (0.52%)	245 (0.39%)	495 (0.46%)	522 (0.25%)	14090 (0.60%)	139 (0.46%)	47 (0.51%)
Lower leg	11164 (0.40%)	29 (0.45%)	151 (0.24%)	329 (0.31%)	632 (0.30%)	9864 (0.41%)	125 (0.41%)	34 (0.36%)
Pelvis	5612 (0.19%)	8 (0.12%)	69 (0.11%)	117 (0.11%)	114 (0.05%)	5249 (0.21%)	45 (0.14%)	10 (0.10%)
Spine	12701 (0.45%)	21 (0.32%)	220 (0.34%)	302 (0.28%)	232 (0.11%)	11761 (0.49%)	133 (0.43%)	32 (0.34%)
Tailbone	1892 (0.06%)	3 (0.04%)	34 (0.05%)	62 (0.06%)	58 (0.03%)	1697 (0.07%)	30 (0.09%)	8 (0.08%)
Upper arm	10179 (0.36%)	14 (0.21%)	119 (0.18%)	370 (0.34%)	328 (0.15%)	9215 (0.38%)	105 (0.34%)	28 (0.29%)
Upper leg	5080 (0.17%)	12 (0.18%)	66 (0.10%)	101 (0.09%)	117 (0.05%)	4726 (0.19%)	43 (0.14%)	15 (0.16%)
Other	34743 (1.34%)	97 (1.69%)	616 (1.04%)	1190 (1.20%)	1613 (0.81%)	30708 (1.41%)	395 (1.43%)	124 (1.42%)
Osteoporotic ³	39006 (1.50%)	71 (1.13%)	599 (0.99%)	1102 (1.08%)	1143 (0.55%)	35611 (1.62%)	372 (1.30%)	108 (1.24%)
Any fracture	72669 (3.36%)	177 (3.55%)	1273 (2.40%)	2328 (2.66%)	3394 (1.86%)	64533 (3.58%)	725 (3.07%)	239 (3.13%)

¹ Native Hawaiian/Other Pacific Islander participants (n=119) are combined with Asian participants for reporting purposes due to small numbers.

² Hip fracture includes adjudicated hip fracture for MRC participants through Extension Study II (2010-Present) and adjudicated hip fracture for SRC participants through Extension Study I (2005-2010) plus self-reported hip fracture for SRC participants during Extension Study II (2010-Present). All other fracture sites are obtained from self-reported data.

³ Osteoporotic fractures include spine, upper arm, lower arm and hip.

Table 2.9
Fracture Outcomes (Age-Specific Annualized Percentages¹) by Age at Diagnosis

Data as of: February 21, 2026

	Age at Diagnosis							
	50-59	60-64	65-69	70-74	75-79	80-84	85-89	≥90
Number of participants²	50943	85308	113775	128269	125440	105730	71605	36055
Mean person years²	4.1	3.7	4.0	4.3	4.4	4.2	3.7	4.0
Fracture site³								
Elbow	157 (0.07%)	272 (0.09%)	456 (0.10%)	602 (0.11%)	722 (0.13%)	587 (0.13%)	446 (0.17%)	234 (0.17%)
Foot	727 (0.35%)	1155 (0.37%)	1719 (0.39%)	1995 (0.38%)	1877 (0.35%)	1498 (0.36%)	756 (0.30%)	353 (0.26%)
Hand	98 (0.05%)	189 (0.06%)	370 (0.08%)	553 (0.10%)	652 (0.12%)	555 (0.13%)	419 (0.16%)	221 (0.16%)
Hip	61 (0.03%)	144 (0.05%)	346 (0.08%)	861 (0.16%)	1774 (0.32%)	2743 (0.63%)	2655 (1.06%)	2119 (1.65%)
Knee	140 (0.07%)	281 (0.09%)	533 (0.12%)	879 (0.16%)	1120 (0.20%)	1130 (0.26%)	642 (0.25%)	314 (0.23%)
Lower arm	599 (0.29%)	1154 (0.37%)	1978 (0.45%)	2826 (0.54%)	3344 (0.64%)	2789 (0.68%)	1857 (0.78%)	1025 (0.83%)
Lower leg	766 (0.37%)	1199 (0.38%)	1761 (0.40%)	2071 (0.39%)	2080 (0.39%)	1710 (0.41%)	1009 (0.41%)	568 (0.43%)
Pelvis	62 (0.03%)	121 (0.04%)	269 (0.06%)	583 (0.11%)	957 (0.17%)	1373 (0.31%)	1285 (0.50%)	962 (0.71%)
Spine	162 (0.08%)	397 (0.13%)	943 (0.21%)	1687 (0.31%)	2669 (0.49%)	3209 (0.76%)	2336 (0.95%)	1298 (1.02%)
Tailbone	50 (0.02%)	78 (0.02%)	128 (0.03%)	199 (0.04%)	336 (0.06%)	411 (0.09%)	411 (0.16%)	279 (0.20%)
Upper arm	197 (0.09%)	460 (0.15%)	852 (0.19%)	1491 (0.28%)	2107 (0.39%)	2289 (0.54%)	1755 (0.70%)	1028 (0.79%)
Upper leg	33 (0.02%)	98 (0.03%)	220 (0.05%)	482 (0.09%)	802 (0.15%)	1224 (0.28%)	1259 (0.49%)	962 (0.71%)
Other	2077 (1.01%)	3257 (1.08%)	4888 (1.16%)	6279 (1.27%)	6851 (1.42%)	5850 (1.60%)	3513 (1.70%)	2028 (1.93%)
Osteoporotic ⁴	993 (0.48%)	2047 (0.66%)	3802 (0.88%)	6109 (1.20%)	8202 (1.67%)	8379 (2.29%)	6005 (3.03%)	3469 (3.67%)
Any fracture	4366 (2.19%)	6977 (2.45%)	10516 (2.74%)	13554 (3.14%)	14518 (3.69%)	12000 (4.42%)	7081 (5.17%)	3657 (6.02%)

¹ Age specific annualized percentages are calculated as the number with an event in the age interval divided by the total person years of all participants with time in the interval.

² Number of participants or mean person years in the age interval for all participants with any follow-up time in the age interval.

³ Hip fracture includes adjudicated hip fracture for MRC participants through Extension Study II (2010-Present) and adjudicated hip fracture for SRC participants through Extension Study I (2005-2010) plus self-reported hip fracture for SRC participants during Extension Study II (2010-Present). All other fracture sites are obtained from self-reported data.

⁴ Osteoporotic fractures include spine, upper arm, lower arm and hip.

Table 2.10
WHI Outcomes by Calendar Year and Cohort

Data as of: February 21, 2026

	Calendar Year														
	1993-2010	2011	2012	2013	2014	2015	2016	2017	2018	2019	2020	2021	2022	2023	2024
MRC Super Cohort¹															
Number of participants with any WHI follow-up time in the interval	44174	22193	21792	21245	20681	19989	19199	18421	17516	16579	15537	14275	13006	11759	10421
Any cancer	6068	287	314	286	268	269	241	218	204	229	166	187	159	166	125
Total cardiovascular disease ²	8310	394	451	433	441	445	423	440	403	421	383	404	354	399	319
CHD ³	2369	128	151	175	150	167	179	178	156	147	145	155	118	119	122
DVT/PE	1230	88	113	102	107	85	76	74	63	74	75	69	67	66	61
Stroke	1814	126	137	131	148	150	149	167	159	180	152	158	128	151	123
Heart failure ⁴	1873	120	142	175	182	207	169	170	141	139	84	116	103	118	80
Hip fracture ⁵	894	75	74	83	108	99	98	98	94	94	82	97	115	91	85
Any fracture ⁶	11654	602	495	442	417	365	347	336	322	303	228	234	239	234	192
Number of participants with WHI or NDI⁷ follow-up time in the interval	44174	37022	36016	34858	33701	32464	31108	29813	28361	26895	25383	23555	21888	20278	18742
Death ⁸	7152	1006	1158	1157	1237	1356	1295	1452	1466	1512	1828	1667	1610	1536	863
SRC Super Cohort^{9,10}															
Number of participants with any WHI follow-up time in the interval	117634	70831	69650	68088	66341	64345	62023	59402	56585	53446	50218	46550	42945	39188	35155
Any cancer ¹¹	19458	1060	1002	1008	872	874	866	819	735	727	630	547	497	225	173
Stroke	4359	210	263	276	298	383	402	424	474	492	454	444	463	443	387
Hip fracture ¹²	2958	340	338	333	367	338	368	385	362	410	350	433	366	400	357
Any fracture ⁶	37410	2376	1755	1723	1656	1411	1362	1317	1190	1119	839	907	810	809	695
Number of participants with WHI or NDI⁷ follow-up time in the interval	117634	99103	96416	93465	90262	86925	83352	79530	75600	71435	67244	62603	58280	53958	49690
Death ⁸	18531	2687	2951	3203	3337	3573	3822	3930	4165	4191	4641	4323	4322	4268	2914

¹ The MRC Super Cohort, or Medical Records Super Cohort, includes all WHI Hormone Trial participants and all Non-Hispanic Black/African American and Hispanic/Latina participants (identified from race/ethnicity collected on Form 2 at baseline) from the CT and OS.

² Includes MI, angina, heart failure, CABG/PTCA, carotid artery disease, PAD, stroke, DVT, PE and CVD death.

³ CHD includes MI and definite and possible CHD death.

⁴ Definite or possible decompensated heart failure adjudicated by UNC.

⁵ Includes adjudicated hip fracture through Extension Study II (2010-Present).

⁶ All non-hip fracture sites are obtained from self-reported data.

⁷ Includes follow-up time after the main study period for non-Extension study participants based on NDI searches.

⁸ Includes deaths identified through NDI searches for non-Extension study participants after the main WHI study close-out. The NDI search for 2024 only includes deaths from the 2024 early release dataset.

⁹ Cardiovascular events other than stroke are not adjudicated for SRC participants in Extension Study II (2010-Present).

¹⁰ The SRC Super Cohort includes all Non-Hispanic White, American Indian/Alaska Native, Asian/Pacific Islander, and Unknown race/ethnicity participants (identified from race/ethnicity collected on Form 2 at baseline) from the Dietary Modification Trial (not also in the Hormone Trial) and the Observational Study.

¹¹ Cancers are no longer adjudicated for SRC participants after 6/15/2023.

¹² Includes adjudicated hip fracture through Extension Study I (2005-2010) plus self-reported hip fracture during Extension Study II (2010-Present).

Table 2.11
Self-Reported Outcomes¹ (Annualized Percentages) by Race/Ethnicity

Data as of: February 21, 2026

	Total	Race/Ethnicity						
		American Indian/ Alaska Native	Asian or Native Hawaiian/ Other Pacific Islander ²	Hispanic/ Latina	Non-Hispanic Black/African American	Non-Hispanic White	More than one Race	Other/ Not Reported
Number of participants	161808	487	4084	7312	14167	133328	1669	761
Mean person years	18.2	13.9	16.0	15.2	15.3	18.8	19.1	12.7
Self-reported outcomes								
Cataracts ³	48674 (5.46%)	127 (5.25%)	1087 (5.06%)	2014 (4.91%)	3803 (4.85%)	40865 (5.56%)	581 (6.12%)	197 (5.44%)
Gallbladder disease ³	10921 (1.08%)	37 (1.48%)	163 (0.60%)	528 (1.32%)	769 (0.84%)	9259 (1.11%)	120 (1.15%)	45 (1.08%)
Glaucoma ³	16048 (1.40%)	51 (1.70%)	395 (1.42%)	740 (1.52%)	1919 (2.10%)	12670 (1.33%)	195 (1.61%)	78 (1.68%)
Kidney stones ³	4194 (0.35%)	22 (0.70%)	82 (0.28%)	244 (0.49%)	433 (0.43%)	3334 (0.34%)	56 (0.44%)	23 (0.47%)
Osteoporosis ³	35417 (3.44%)	83 (2.87%)	997 (4.05%)	1589 (3.58%)	1921 (2.01%)	30316 (3.58%)	357 (3.19%)	154 (3.77%)
Rheumatoid arthritis ³	8598 (0.74%)	37 (1.24%)	168 (0.59%)	806 (1.71%)	1299 (1.41%)	6097 (0.63%)	120 (0.99%)	71 (1.57%)
Lupus ⁴	2757 (0.10%)	11 (0.17%)	43 (0.07%)	145 (0.13%)	282 (0.13%)	2218 (0.09%)	46 (0.15%)	12 (0.13%)
Diabetes (treated)	30245 (1.17%)	89 (1.78%)	779 (1.40%)	1467 (1.61%)	3090 (1.88%)	24311 (1.09%)	378 (1.44%)	131 (1.61%)
Hypertension treated w/pills	65598 (4.86%)	172 (6.35%)	1434 (4.78%)	2861 (5.44%)	4381 (7.42%)	55807 (4.69%)	716 (5.63%)	227 (5.07%)
Intestinal polyps	42673 (1.97%)	101 (1.95%)	891 (1.83%)	1625 (1.89%)	3558 (2.21%)	35861 (1.95%)	479 (2.07%)	158 (2.14%)
Osteoarthritis	55855 (4.82%)	130 (5.09%)	1414 (4.45%)	2532 (5.36%)	4214 (4.83%)	46748 (4.80%)	615 (5.29%)	202 (4.80%)
Dementia ^{5,6}	30220 (1.96%)	53 (1.76%)	524 (1.63%)	1084 (2.11%)	1823 (1.81%)	26310 (1.98%)	341 (2.05%)	85 (2.05%)
Macular degeneration ⁵	28849 (1.99%)	47 (1.65%)	388 (1.24%)	855 (1.71%)	1175 (1.17%)	26015 (2.10%)	300 (1.86%)	69 (1.72%)
Parkinson's disease ⁵	3605 (0.22%)	7 (0.22%)	69 (0.20%)	115 (0.21%)	180 (0.17%)	3176 (0.23%)	50 (0.28%)	8 (0.18%)
COPD ⁷	13042 (1.37%)	27 (1.50%)	144 (0.70%)	401 (1.24%)	827 (1.37%)	11447 (1.39%)	168 (1.69%)	28 (1.12%)

¹ Excludes participants with a prevalent condition at baseline.

² Native Hawaiian/Other Pacific Islander participants (n=119) are combined with Asian participants for reporting purposes due to small numbers.

³ Data not collected during WHI Extension Studies I and II (2005-Present). Reported counts and event rates are limited to participation during the original program (1993-2005).

⁴ Data not collected during WHI Extension Study II (2010-Present). Reported counts and event rates are limited to participation during the original program and Extension Study I (1993-2010).

⁵ Data only collected during WHI Extension Studies I and II (2005-Present). Reported counts and event rates are limited to participation during WHI Extension Studies I and II (2005-Present).

⁶ During Extension Study I (2005-2010), women were asked to report “Moderate or severe memory problems (for example, dementia or Alzheimer’s)”. During Extension Study II (2010-Present), women could report either “Moderate or severe memory problems” or “Dementia or Alzheimer’s” and both responses are combined into this Dementia outcome.

⁷ Data only collected during WHI Extension Study II (2010-Present). Reported counts and event rates are limited to participation during WHI Extension Study II (2010-Present).

Table 2.12
Self-Reported Outcomes¹ (Age-Specific Annualized Percentages²) by Age at Diagnosis

Data as of: February 21, 2026

	Age at Diagnosis							
	50-59	60-64	65-69	70-74	75-79	80-84	85-89	≥90
Number of participants³	50943	85308	113775	128269	125440	105730	71605	36055
Mean person years³	4.1	3.7	4.0	4.3	4.4	4.2	3.7	4.0
Self-reported outcomes								
Cataracts ⁴	2598 (1.32%)	7920 (3.50%)	13196 (6.26%)	13231 (8.60%)	8607 (10.81%)	2886 (13.22%)	236 (12.97%)	0 (0.00%)
Gallbladder disease ⁴	1734 (0.97%)	2295 (1.07%)	2650 (1.17%)	2227 (1.10%)	1455 (1.08%)	508 (1.01%)	52 (0.97%)	0 (0.00%)
Glaucoma ⁴	1480 (0.74%)	2838 (1.15%)	3826 (1.47%)	3791 (1.66%)	2781 (1.87%)	1182 (2.18%)	149 (2.67%)	1 (16.00%)
Kidney stones ⁴	514 (0.26%)	801 (0.32%)	959 (0.36%)	917 (0.38%)	628 (0.39%)	324 (0.52%)	51 (0.76%)	0 (0.00%)
Osteoporosis ⁴	3618 (1.87%)	6255 (2.73%)	8400 (3.58%)	8552 (4.28%)	6050 (4.83%)	2300 (5.27%)	242 (5.61%)	0 (0.00%)
Rheumatoid arthritis ⁴	1315 (0.67%)	1704 (0.70%)	1907 (0.73%)	1744 (0.74%)	1304 (0.83%)	550 (0.94%)	74 (1.18%)	0 (0.00%)
Lupus ⁵	274 (0.13%)	403 (0.13%)	508 (0.11%)	552 (0.10%)	509 (0.09%)	305 (0.07%)	151 (0.06%)	55 (0.04%)
Diabetes (treated)	1343 (0.67%)	2517 (0.85%)	4093 (0.99%)	5221 (1.07%)	5862 (1.22%)	5375 (1.44%)	3579 (1.66%)	2255 (1.99%)
Hypertension treated w/pills	5016 (3.19%)	8531 (4.15%)	12365 (4.86%)	13933 (5.28%)	12804 (5.75%)	8166 (5.66%)	3516 (5.04%)	1267 (3.93%)
Intestinal polyps	2700 (1.38%)	5533 (2.01%)	9019 (2.46%)	10107 (2.47%)	8632 (2.25%)	4698 (1.64%)	1565 (0.95%)	419 (0.47%)
Osteoarthritis	3887 (2.68%)	6918 (3.74%)	10037 (4.48%)	11409 (5.04%)	10740 (5.77%)	7453 (6.39%)	3661 (6.85%)	1750 (7.85%)
Dementia ^{6,7}	2 (0.15%)	97 (0.06%)	446 (0.18%)	1431 (0.41%)	4094 (1.01%)	7613 (2.06%)	8696 (3.79%)	7841 (6.98%)
Macular degeneration ⁶	2 (0.15%)	215 (0.14%)	1016 (0.41%)	2948 (0.87%)	5687 (1.46%)	8065 (2.35%)	6843 (3.33%)	4073 (4.30%)
Parkinson's disease ⁶	1 (0.07%)	38 (0.03%)	171 (0.07%)	423 (0.12%)	886 (0.21%)	1056 (0.27%)	724 (0.28%)	306 (0.22%)
COPD ⁸	-- --	11 (1.57%)	295 (0.84%)	1432 (1.12%)	2867 (1.30%)	3679 (1.46%)	3020 (1.56%)	1738 (1.44%)

¹ Excludes participants with a prevalent condition at baseline.

² Age specific annualized percentages are calculated as the number with an event in the age interval divided by the total person years of all participants with time in the interval.

³ Number of participants or mean person years in the age interval for all participants with any follow-up time in the age interval.

⁴ Data not collected during WHI Extension Studies I and II (2005-Present). Reported counts and event rates are limited to participation during the original program (1993-2005).

⁵ Data not collected during WHI Extension Study II (2010-Present). Reported counts and event rates are limited to participation during the original program and Extension Study I (1993-2010).

⁶ Data only collected during WHI Extension Studies I and II (2005-Present). Reported counts and event rates are limited to participation during WHI Extension Studies I and II (2005-Present).

⁷ During Extension Study I (2005-2010), women were asked to report "Moderate or severe memory problems (for example, dementia or Alzheimer's)". During Extension Study II (2010-Present), women could report either "Moderate or severe memory problems" or "Dementia or Alzheimer's" and both responses are combined into this Dementia outcome.

⁸ Data only collected during WHI Extension Study II (2010-Present). Reported counts and event rates are limited to participation during WHI Extension Study II (2010-Present).

Table 3.1
Aging Indicators at Start¹ (September 30, 2010) of WHI Extension Study II (2010-Present) by Age

Data as of: February 21, 2026

	Age on September 30, 2010											
	Total		<65		65-69		70-79		80-89		≥90	
	(N = 93,567)		(N = 1,014)		(N = 15,267)		(N = 46,380)		(N = 28,699)		(N = 2,207)	
	N	%	N	%	N	%	N	%	N	%	N	%
Never completed Form 151/155	14	<0.1	1	0.1	2	<0.1	6	<0.1	5	<0.1	0	0.0
Age on 9/30/2010, mean (SD)	76.3	(6.6)	63.7	(0.6)	67.4	(1.3)	74.5	(2.8)	83.4	(2.6)	91.1	(1.2)
Perceived Health Status												
Excellent	11077	12.2	201	20.2	2770	18.4	5907	13.1	2062	7.5	137	6.6
Very good	37968	41.8	439	44.1	7035	46.8	19886	44.0	9953	36.1	655	31.4
Good	32646	35.9	270	27.1	4316	28.7	15608	34.5	11570	42.0	882	42.2
Fair	8340	9.2	74	7.4	817	5.4	3527	7.8	3554	12.9	368	17.6
Poor	850	0.9	11	1.1	79	0.5	310	0.7	404	1.5	46	2.2
Activities of Daily Living Dependencies												
No limitations	80278	88.3	940	95.4	14266	95.9	41522	92.0	22363	80.4	1187	56.1
Eating	434	0.5	1	0.1	29	0.2	153	0.3	209	0.8	42	2.0
Transferring	922	1.0	5	0.5	52	0.4	304	0.7	468	1.7	93	4.4
Dressing	1558	1.7	3	0.3	98	0.7	504	1.1	794	2.9	159	7.6
Bathing	2563	2.8	5	0.5	124	0.8	740	1.6	1389	5.0	305	14.6
Taking Medication	2734	3.0	4	0.4	117	0.8	723	1.6	1569	5.7	321	15.3
Grocery Shopping	8571	9.5	32	3.3	430	2.9	2752	6.1	4527	16.4	830	40.0
Independence												
Supportive services availability	11464	13.2	49	5.0	880	6.0	4230	9.7	5511	21.3	794	41.9
Supportive services use	4084	36.7	9	18.8	102	12.0	889	21.7	2543	47.5	541	70.4
Need for nursing care	2154	2.3	6	0.6	130	0.9	754	1.6	1102	3.9	162	7.6
Use of walking aid ²	11898	13.1	41	4.1	618	4.1	3872	8.5	6356	23.0	1011	49.7
Lives alone ³	31579	41.4	240	27.2	4016	30.0	14858	37.7	11682	54.7	783	61.7
Falls⁴												
None	58944	64.1	690	68.6	10390	68.7	30146	65.8	16590	59.4	1128	54.5
One	19181	20.9	182	18.1	2770	18.3	9305	20.3	6463	23.1	461	22.3
Two	8852	9.6	91	9.0	1327	8.8	4160	9.1	3002	10.8	272	13.1
Three or more	4929	5.4	43	4.3	628	4.2	2185	4.8	1863	6.7	210	10.1
Aging Indicators, mean (SD)⁵												
Perceived Health Status	63.8	(21.4)	68.7	(22.5)	69.3	(20.7)	65.2	(20.9)	58.8	(21.3)	55.6	(22.2)
Quality of Life	79.4	(16.2)	81.8	(15.1)	82.6	(14.9)	80.6	(15.6)	76.1	(17.0)	72.2	(18.9)
Activities of Daily Living ⁶	98.1	(8.1)	99.6	(2.6)	99.4	(4.8)	98.8	(6.2)	96.6	(10.5)	90.6	(16.7)
Physical Functioning (RAND-36)	72.3	(25.9)	83.7	(21.9)	82.5	(20.9)	75.4	(24.0)	62.6	(27.1)	47.4	(28.4)

¹ Based on Form 151 (99.9%) or Form 155 (0.1%) most proximal to 9/30/2010; unless otherwise indicated.

² Cane, crutches, walker, or wheelchair.

³ Collected on Form 155 only.

⁴ Falls data were collected on Form 33.

⁵ Aging indicators summarized as continuous variables. Perceived health status, quality of life and ADL were rescaled; all indicators are scaled 0 (worst) to 100 (best).

⁶ Includes eating, transferring, dressing, bathing, taking medication and grocery shopping.

Table 3.2
Aging Indicators Approximately 14 Years Later¹ (September 30, 2024) by Age

Data as of: February 21, 2026

	Total (N = 93,567)		Age on September 30, 2010									
			<65 (N = 1,014)		65-69 (N = 15,267)		70-79 (N = 46,380)		80-89 (N = 28,699)		≥90 (N = 2,207)	
	N	%	N	%	N	%	N	%	N	%	N	%
Completed Form¹	29162	31.2	673	66.4	9084	59.5	16814	36.3	2569	9.0	22	1.0
Never completed Form¹ after 9/30/2024	18096	19.3	203	20.0	3538	23.2	11050	23.8	3260	11.4	45	2.0
Deceased before 9/30/2024	46309	49.5	138	13.6	2645	17.3	18516	39.9	22870	79.7	2140	97.0
Age completed form¹, mean (SD)	86.8	(4.9)	78.4	(0.7)	81.9	(1.4)	88.2	(2.7)	96.5	(2.0)	105.2	(1.4)
Perceived Health Status²												
Excellent	1079	6.9	34	9.1	435	8.7	554	6.2	55	4.1	1	8.3
Very good	5817	37.0	157	42.1	2207	44.0	3117	34.8	331	24.4	5	41.7
Good	6325	40.3	143	38.3	1822	36.3	3761	42.0	595	43.9	4	33.3
Fair	2131	13.6	35	9.4	510	10.2	1289	14.4	295	21.8	2	16.7
Poor	355	2.3	4	1.1	42	0.8	231	2.6	78	5.8	0	0.0
Activities of Daily Living Dependencies												
No Limitations	19921	69.9	607	90.7	7614	85.1	10954	66.7	741	30.1	5	26.3
Eating	676	2.4	9	1.3	90	1.0	397	2.4	179	7.4	1	5.3
Transferring	1243	4.4	8	1.2	154	1.7	718	4.4	357	14.7	6	31.6
Dressing	1813	6.4	11	1.6	242	2.7	1047	6.4	505	20.7	8	42.1
Bathing	2788	9.8	14	2.1	315	3.5	1663	10.2	787	32.5	9	47.4
Taking Medication	2980	10.5	20	3.0	347	3.9	1805	11.1	799	32.9	9	47.4
Grocery Shopping	7669	27.1	53	7.9	1103	12.4	4887	30.1	1613	66.8	13	72.2
Independence												
Supportive services availability ²	4340	29.7	39	11.0	761	16.1	2782	33.6	751	60.8	7	63.6
Supportive services use ²	2625	63.9	15	39.5	290	40.4	1702	64.7	611	85.8	7	100.0
Need for nursing care ²	1814	11.5	19	5.1	333	6.6	1124	12.5	335	24.6	3	25.0
Use of walking aid ³	10300	37.6	81	12.3	1750	20.0	6663	42.5	1793	78.0	13	68.4
Lives alone ⁴	7846	50.8	135	36.6	2287	45.5	4769	54.1	650	53.2	5	55.6
Falls⁵												
None	22755	57.8	512	64.6	6940	61.4	13127	57.0	2156	51.4	20	48.8
One	8823	22.4	158	19.9	2468	21.8	5197	22.6	990	23.6	10	24.4
Two	4189	10.6	68	8.6	1102	9.8	2531	11.0	482	11.5	6	14.6
Three or more	3596	9.1	54	6.8	791	7.0	2176	9.4	570	13.6	5	12.2
Aging Indicators, Mean (SD)⁶												
Perceived Health Status ²	58.2	(21.9)	62.2	(20.7)	62.4	(20.6)	56.9	(21.9)	49.8	(23.1)	60.4	(22.5)
Quality of Life	75.4	(17.8)	79.6	(15.8)	78.5	(15.9)	74.6	(17.9)	67.7	(20.6)	71.8	(23.6)
Activities of Daily Living ⁷	93.0	(16.8)	97.9	(10.4)	97.2	(10.5)	92.6	(16.8)	78.2	(26.2)	65.7	(32.9)
Physical Functioning (RAND-36)	55.9	(29.6)	71.9	(24.5)	67.0	(26.2)	52.6	(28.8)	30.7	(26.9)	37.9	(38.3)

¹ Based on Form 160 (51.7%), 151A (44.8%), 160P (1.8%), 151 (1.5%), or 151B (0.1%) most proximal and subsequent to 9/30/2024, unless otherwise indicated. Due to the form ascertainment schedule, a 14-year snapshot was used as data was incomplete for 15 years.

² Collected on Form 151, 151B, 160, or 160B only, missing if most proximal form was Form 151A.

³ Use of walking aid was collected on Form 151/151A (cane, crutches, walker, wheelchair) and, on Form 160/160P (expanded to include walking sticks/poles, mobility scooter, and other aid); values are missing when the most proximal form was Form 151B.

⁴ Collected on Form 151B, 160, and 160P only; missing if most proximal form was Form 151A or 151.

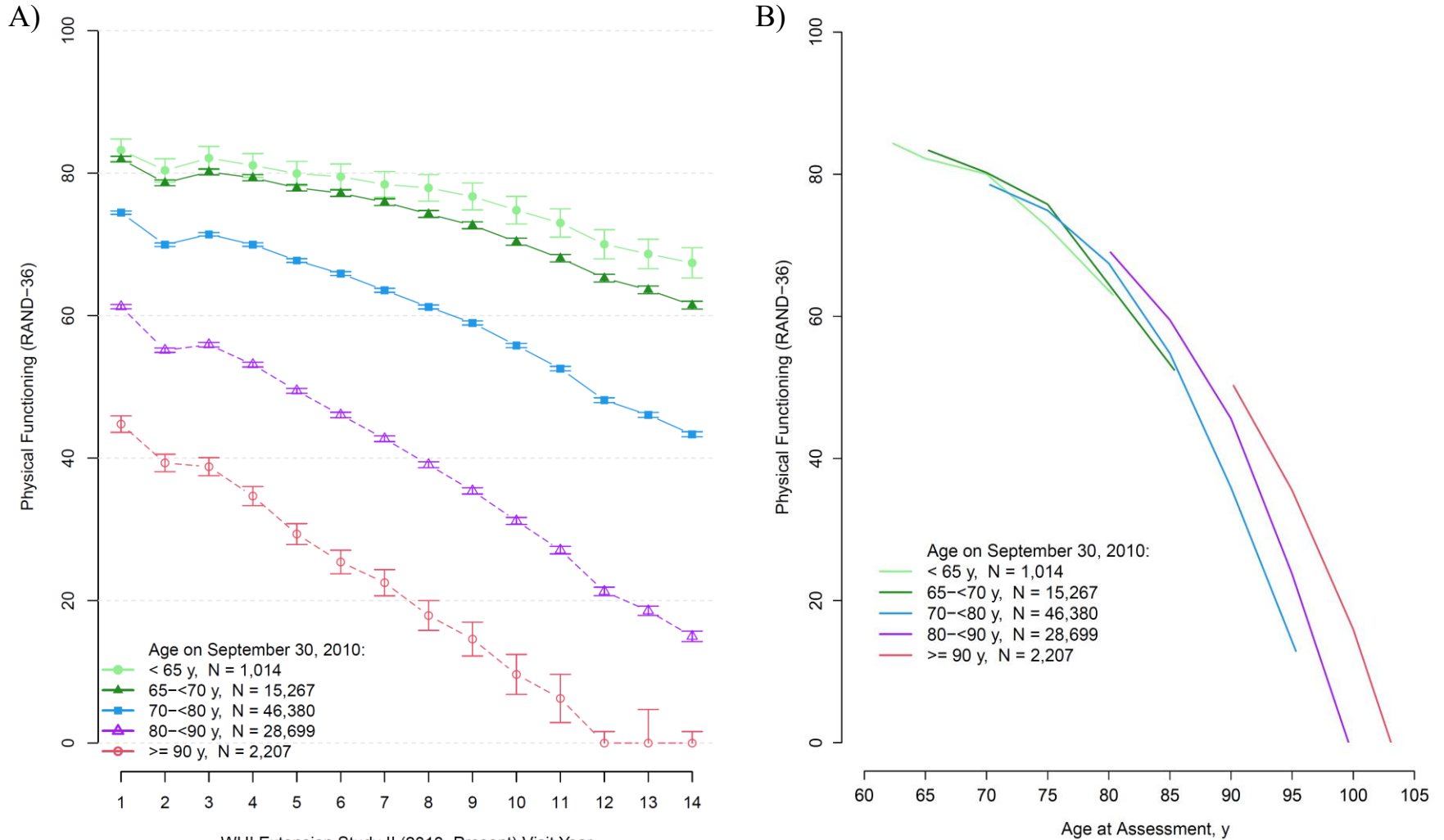
⁵ Falls data were collected on Form 33.

⁶ Aging indicators summarized as continuous variables. Perceived health status, quality of life and ADL were rescaled; all indicators are scaled 0 (worst) to 100 (best).

⁷ Includes eating, transferring, dressing, bathing, taking medication and grocery shopping.

Figure 3.1
Mean Physical Functioning by Visit Year (panel A) and by Age at Assessment (panel B) During WHI Extension Study II (2010-Present)

Data as of: February 21, 2026

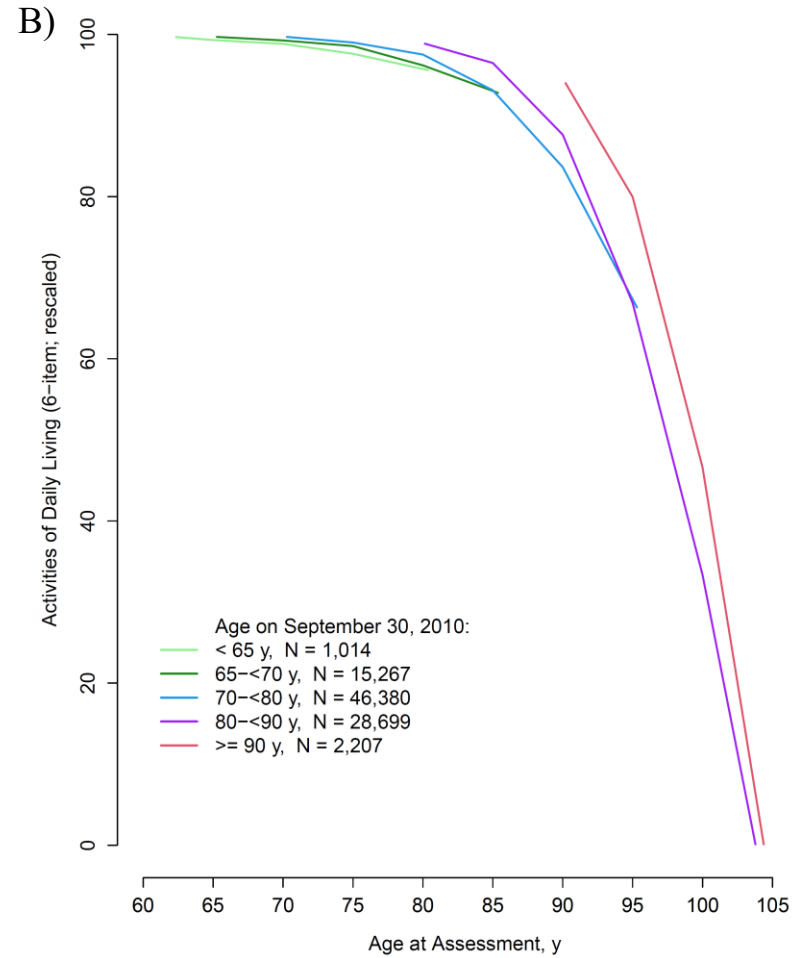
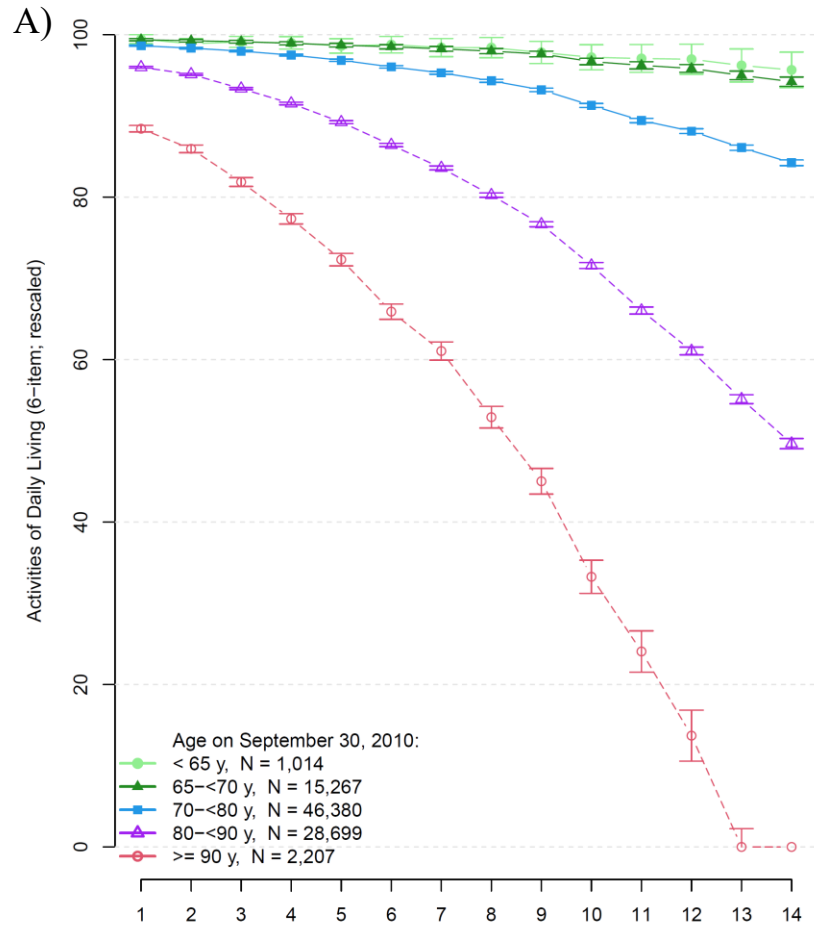


Number At Visit	1	2	3	4	5	6	7	8	9	10	11	12	13	14
< 65 y	885	887	797	774	701	667	627							
65-<70 y	13528	13309	11975	11640	10473	9550	8784							
70-<80 y	39576	37387	31397	28951	24204	19649	16451							
80-<90 y	21538	18294	12814	10041	6886	4314	2749							
>= 90 y	1270	926	499	287	148	66	25							

Figure 3.2

Mean Activities of Daily Living¹ by Visit Year (panel A) and by Age at Assessment (panel B) During WHI Extension Study II (2010-Present)

Data as of: February 21, 2026



WHI Extension Study II (2010-Present) Visit Year							
Number At Visit	1	2	3	4	5	6	7
< 65 y	895	908	856	829	752	718	662
65-70 y	13718	13822	12892	12434	11227	10383	9495
70-80 y	40610	39839	35436	32005	26821	22440	18291
80-90 y	22424	20367	15348	11648	7778	5055	3097
>= 90 y	1331	1045	591	335	170	67	24

¹Includes eating, transferring, dressing, bathing, taking medication and grocery shopping.

Table 3.3
Availability of Core and Ancillary Measures Among WHI Centenarians by Participation Status (N=2,757)

Data as of: February 21, 2026

Subgroup	Data collected and collection schedule	Total (N=2,757)		Alive with current or recent participation (N=597)		Deceased (N=1,376)		Not currently participating ¹ and not known to be deceased as of 12/31/2024 (N=784)	
		N	%	N	%	N	%	N	%
MRC Super Cohort ²	Adjudicated CVD, cancer and hip fracture (throughout WHI)	702	25.5	134	22.4	340	24.7	228	29.1
SRC Super Cohort ³	Adjudicated stroke and cancer (throughout WHI)	2055	74.5	463	77.6	1036	75.3	556	70.9
CT Participants	Adjudicated outcomes (enrollment to 2010); blood pressure, height, weight, waist (baseline and annually); specimens (baseline and year 1); medication inventory (baseline and years 1, 3, 6, 9)	993	36.0	236	39.5	528	38.4	229	29.2
OS Participants	Adjudicated outcomes (enrollment to 2010); blood pressure, height, weight, waist, specimens, and medication inventory (baseline and year 3)	1764	64.0	361	60.5	848	61.6	555	70.8
CT 6% Subsample (W1)	Cardiometabolic markers and micronutrients (baseline, years 1, 3, 6, 9)	71	2.6	20	3.4	31	2.3	20	2.6
CT subsample >age 65 at baseline (Form 90)	Grip strength, chair stands, walking speed (baseline, years 1, 3, 6, 9)	195	7.1	54	9.0	101	7.3	40	5.1
BMD Cohort	BMD, lean and fat mass (baseline, years 1, 3, 6, 9)	192	7.0	38	6.4	95	6.9	59	7.5
CVD Biomarker Cohort (W6, W11, W14)	Cardiometabolic markers (baseline)	545	19.8	135	22.6	303	22.0	107	13.6
Extension Study 1 Participants	Medication inventory (2008)	1861	67.5	587	98.3	1086	78.9	188	24.0
MRC ⁴ Participants	Medication inventory (2012)	359	13.0	118	19.8	219	15.9	22	2.8

¹ Not currently participating includes participants who did not consent to WHI Extension Studies, stopped or were lost to follow-up.

² The MRC Super Cohort includes all WHI Hormone Trial participants and all Non-Hispanic Black/African American and Hispanic/Latina participants (identified from race/ethnicity collected on Form 2 at baseline) from the CT and OS.

³ The SRC Super Cohort includes all Non-Hispanic White, American Indian/Alaska Native, Asian/Pacific Islander, and Unknown Race/Ethnicity participants (identified from race/ethnicity collected on Form 2 at baseline) from the Dietary Modification Trial (not also in the Hormone Trial) and the Observational Study.

⁴ The MRC includes all WHI Hormone Trial participants and all Non-Hispanic Black/African American and Hispanic/Latina participants (identified from race/ethnicity collected on Form 2 at baseline) from the CT and OS who consented to Extension Study II (2010-Present).

Table 3.3 (continued)
Availability of Core and Ancillary Measures Among WHI Centenarians by Participation Status (N=2,757)

Data as of: February 21, 2026

Subgroup	Data collected and collection schedule	Total (N=2,757)		Alive with current or recent participation (N=597)		Deceased (N=1,376)		Not currently participating ¹ and not known to be deceased as of 12/31/2024 (N=784)	
		N	%	N	%	N	%	N	%
Long Life Study (W64) Participants	Cardiometabolic markers, performance measures, specimens (2011)	265	9.6	89	14.9	164	11.9	12	1.5
Long Life Study 2 (W77) Participants	Cardiometabolic markers, performance measures, specimens (2023-2024)	89	3.2	61	10.2	27	2.0	1	0.1
Participants with measured GWAS	Genome-wide SNP genotyping (harmonized & imputed) (baseline)	568	20.6	130	21.8	336	24.4	102	13.0
OPACH (AS 286) and OPACH 2 (AS 661) Participants	Physical activity measured using accelerometry (2012-2014 and 2021-2022)	227	8.2	80	13.4	137	10.0	10	1.3
LILAC (AS 370) Participants	Cancer treatment exposures (throughout WHI)	154	5.6	50	8.4	95	6.9	9	1.1

¹ Not currently participating includes participants who did not consent to WHI Extension Studies, stopped or were lost to follow-up.

Table 4.1
Participant Characteristics for Long Life Study (LLS) Participants by Race/Ethnicity¹

Data as of: March 6, 2021

	Race/Ethnicity									
	Total ²		Hispanic/ Latina		Non-Hispanic Black/African American		Non-Hispanic White		More than one Race	
	N	Mean (SD) or %	N	Mean (SD) or %	N	Mean (SD) or %	N	Mean (SD) or %	N	Mean (SD) or %
Total LLS Participants	7875		1277		2483		3978		110	
Blood draw completed	7475	94.9	1238	96.9	2284	92.0	3827	96.2	101	91.8
Age at visit, years	7875	79.2 (6.8)	1277	75.4 (6.1)	2483	75.9 (6.0)	3978	82.5 (5.8)	110	77.8 (6.3)
63-69	724	9.2	236	18.5	379	15.3	97	2.4	9	8.2
70-79	3050	38.7	717	56.1	1433	57.7	829	20.8	60	54.5
80-89	3689	46.8	305	23.9	620	25.0	2717	68.3	35	31.8
≥90	412	5.2	19	1.5	51	2.1	335	8.4	6	5.5
Education	7826	--	1266	--	2461	--	3962	--	110	--
0-8 years	112	1.4	71	5.6	24	1.0	17	0.4	0	0.0
Some high school	286	3.7	76	6.0	112	4.6	96	2.4	1	0.9
High school diploma/GED	1288	16.5	199	15.7	280	11.4	794	20.0	10	9.1
School after high school	3041	38.9	543	42.9	915	37.2	1530	38.6	46	41.8
College degree or higher	3099	39.6	377	29.8	1130	45.9	1525	38.5	53	48.2
Body-mass Index (BMI), kg/m ²	7775	28.2 (5.9)	1265	28.0 (5.6)	2448	29.9 (6.2)	3928	27.3 (5.5)	107	28.3 (6.7)
< 18.5	112	1.4	13	1.0	23	0.9	72	1.8	3	2.8
18.5 - 24.9	2378	30.6	415	32.8	513	21.0	1410	35.9	31	29.0
25.0 - 29.9	2799	36.0	467	36.9	868	35.5	1419	36.1	39	36.4
30.0 - 34.9	1505	19.4	233	18.4	577	23.6	664	16.9	22	20.6
35.0 - 39.9	633	8.1	88	7.0	300	12.3	240	6.1	4	3.7
≥ 40	348	4.5	49	3.9	167	6.8	123	3.1	8	7.5

¹ Long Life Study participants are a subset of the Medical Records Cohort (MRC) which includes all WHI Hormone Trial participants and all Non-Hispanic Black/African American and Hispanic/Latina participants (identified from race/ethnicity collected on Form 2 at baseline) from the CT and OS. However, race/ethnicity is presented using the imputed Form 41 data and following the WHI Race/Ethnicity Task Force guidelines.

² Separate columns for American Indian/Alaska Native (n=4), Asian or Native Hawaiian/Other Pacific Islander (n=1) and Other/Not Reported (n=22) race/ethnicities are not displayed due to small numbers, however these participants are included in the Total column.

Table 4.1 (continued)
Participant Characteristics for Long Life Study (LLS) Participants by Race/Ethnicity¹

Data as of: March 6, 2021

	Race/Ethnicity									
	Total ²		Hispanic/ Latina		Non-Hispanic Black/African American		Non-Hispanic White		More than one Race	
	N	Mean (SD) or %	N	Mean (SD) or %	N	Mean (SD) or %	N	Mean (SD) or %	N	Mean (SD) or %
Systolic blood pressure, mmHg	7864	125.9 (14.6)	1276	123.8 (13.7)	2478	127.1 (14.4)	3973	125.7 (14.8)	110	127.1 (16.8)
≤120	2962	37.7	566	44.4	851	34.3	1499	37.7	36	32.7
120 - 140	3796	48.3	564	44.2	1246	50.3	1918	48.3	56	50.9
>140	1106	14.1	146	11.4	381	15.4	556	14.0	18	16.4
Diastolic blood pressure, mmHg	7862	72.6 (8.9)	1275	72.2 (8.2)	2479	74.0 (8.8)	3971	71.8 (9.1)	110	73.3 (9.4)
<80	6073	77.2	1037	81.3	1807	72.9	3125	78.7	83	75.5
80-89	1535	19.5	209	16.4	567	22.9	730	18.4	24	21.8
≥90	254	3.2	29	2.3	105	4.2	116	2.9	3	2.7
Grip strength, kg	7274	17.8 (7.0)	1154	18.0 (6.3)	2329	20.0 (7.3)	3662	16.4 (6.7)	102	19.0 (7.2)
Repeated chair stands, #stands/sec	6949	0.35 (0.13)	1182	0.37 (0.1)	2178	0.34 (0.1)	3468	0.35 (0.1)	98	0.34 (0.1)
Walking pace, m/sec	6911	0.65 (0.29)	1124	0.73 (0.3)	2164	0.62 (0.3)	3502	0.65 (0.3)	97	0.60 (0.3)
Look AHEAD SPPB ³	7022	1.3 (0.5)	1147	1.4 (0.5)	2238	1.4 (0.5)	3517	1.2 (0.5)	97	1.2 (0.5)
EPESE SPPB ⁴	7102	7.9 (2.7)	1159	8.7 (2.6)	2260	7.8 (2.6)	3560	7.8 (2.8)	99	7.4 (2.7)

¹ Long Life Study participants are a subset of the Medical Records Cohort (MRC) which includes all WHI Hormone Trial participants and all Non-Hispanic Black/African American and Hispanic/Latina participants (identified from race/ethnicity collected on Form 2 at baseline) from the CT and OS. However, race/ethnicity is presented using the imputed Form 41 data and following the WHI Race/Ethnicity Task Force guidelines.

² Separate columns for American Indian/Alaska Native (n=4), Asian or Native Hawaiian/Other Pacific Islander (n=1) and Other/Not Reported (n=22) race/ethnicities are not displayed due to small numbers, however these participants are included in the Total column.

³ The Look AHEAD Short Physical Performance Battery (SPPB) ranges from 0 to 3, with higher scores indicating better physical performance.

⁴ The Established Populations for the Epidemiologic Studies of the Elderly (EPESE) Short Physical Performance Battery (SPPB) ranges from 0 to 12, with higher scores indicating better physical performance.

Table 4.2
Current Participation and Vital Status for Long Life Study (LLS) Participants

Data as of: February 21, 2026

Vital Status/Participation	LLS Participants (N=7,875)	
	N	%
Deceased	4293	54.5
Alive: Current Participation ¹	2991	38.0
Alive: Recent Participation ²	165	2.1
Alive: Past/Unknown Participation	1	<0.1
Stopped Follow-Up ³	241	3.1
Lost to Follow-Up ⁴	184	2.3

¹ Participants who have filled in a Form 33 within the last 15 months.

² Participants who last filled in a Form 33 between 15 and 24 months ago.

³ Participants with codes 5 (no follow-up) or 8 (absolutely no follow-up) on Form 7 or 9.

⁴ Participants not in any of the above categories.

Table 4.3
Verified Outcomes¹ (Annualized Percentages) After Long Life Study (LLS) Visit
by Race/Ethnicity² for LLS Participants

Data as of: February 21, 2026

	Total	Race/Ethnicity			
		Hispanic/ Latina	Non-Hispanic Black/African American	Non-Hispanic White	More than one Race
Number enrolled	7875	1277	2483	3978	110
Mean person years post LLS study visit	9.6	10.8	10.3	8.8	9.1
Cardiovascular outcomes					
CHD ³	802 (1.08%)	95 (0.70%)	192 (0.76%)	500 (1.47%)	13 (1.32%)
CHD death ⁴	514 (0.68%)	51 (0.37%)	115 (0.45%)	336 (0.96%)	11 (1.09%)
Clinical MI	366 (0.51%)	50 (0.38%)	88 (0.36%)	224 (0.69%)	3 (0.31%)
CABG/PTCA	279 (0.38%)	40 (0.30%)	71 (0.28%)	165 (0.49%)	2 (0.20%)
Carotid artery disease	30 (0.04%)	3 (0.02%)	9 (0.04%)	18 (0.05%)	0 (0.00%)
Heart failure ⁵	837 (1.14%)	74 (0.55%)	198 (0.79%)	554 (1.66%)	9 (0.91%)
Stroke	759 (1.05%)	102 (0.77%)	197 (0.81%)	443 (1.34%)	14 (1.49%)
PAD	87 (0.12%)	9 (0.07%)	35 (0.14%)	42 (0.12%)	1 (0.10%)
DVT	283 (0.39%)	33 (0.25%)	106 (0.43%)	142 (0.42%)	2 (0.20%)
Pulmonary embolism	227 (0.31%)	20 (0.15%)	95 (0.38%)	106 (0.31%)	6 (0.60%)
DVT/PE	418 (0.57%)	45 (0.33%)	169 (0.68%)	198 (0.58%)	6 (0.60%)
Aortic aneurysm	24 (0.03%)	3 (0.02%)	8 (0.03%)	12 (0.03%)	1 (0.10%)
Valvular heart disease	257 (0.34%)	34 (0.25%)	36 (0.14%)	184 (0.54%)	3 (0.30%)
Total cardiovascular disease⁶	2799 (4.11%)	321 (2.51%)	733 (3.15%)	1703 (5.51%)	35 (3.79%)
Cancers					
Breast cancer	317 (0.45%)	53 (0.41%)	131 (0.56%)	129 (0.40%)	3 (0.32%)
Invasive breast cancer	276 (0.39%)	46 (0.36%)	110 (0.46%)	116 (0.36%)	3 (0.32%)
In situ breast cancer	43 (0.06%)	7 (0.05%)	22 (0.09%)	14 (0.04%)	0 (0.00%)
Ovarian cancer	35 (0.05%)	6 (0.04%)	9 (0.04%)	20 (0.06%)	0 (0.00%)
Endometrial cancer ⁷	27 (0.07%)	4 (0.06%)	8 (0.08%)	15 (0.07%)	0 (0.00%)
Colorectal cancer	112 (0.15%)	10 (0.07%)	29 (0.11%)	72 (0.21%)	1 (0.10%)
Other cancer ⁸	734 (1.00%)	89 (0.66%)	230 (0.92%)	389 (1.15%)	21 (2.24%)
Total cancer	1171 (1.64%)	154 (1.17%)	392 (1.62%)	597 (1.81%)	22 (2.35%)
Fractures					
Hip Fracture	490 (0.68%)	42 (0.31%)	52 (0.21%)	390 (1.20%)	5 (0.51%)
Deaths					
Cardiovascular deaths	1569 (2.08%)	147 (1.07%)	348 (1.36%)	1048 (3.00%)	23 (2.29%)
Cancer deaths	651 (0.86%)	79 (0.57%)	210 (0.82%)	345 (0.99%)	14 (1.39%)
Other known cause	434 (0.57%)	55 (0.40%)	95 (0.37%)	271 (0.78%)	9 (0.89%)
Unknown cause	39 (0.05%)	3 (0.02%)	8 (0.03%)	28 (0.08%)	0 (0.00%)
Not yet adjudicated	191 (0.25%)	22 (0.16%)	62 (0.24%)	104 (0.30%)	2 (0.20%)
Total death	4293 (5.68%)	449 (3.26%)	1023 (4.00%)	2739 (7.84%)	68 (6.76%)

¹ Other than for heart failure, counts for individual outcomes exclude participants with a prevalent condition at LLS exam.

² Long Life Study participants were selected from MRC participants which includes all WHI Hormone Trial participants and all Non-Hispanic Black/African American and Hispanic/Latina participants (identified from race/ethnicity collected on Form 2 at baseline) from the CT and OS. However, race/ethnicity is presented using the imputed Form 41 data and following the WHI Race/Ethnicity Task Force guidelines. Outcome counts for American Indian/Alaska Native (n=4), Asian or Native Hawaiian/Other Pacific Islander (n=1) and Other/Not Reported (n=22) race/ethnicities are not displayed due to small numbers.

³ CHD includes clinical MI and CHD death.

⁴ CHD death includes definite and possible CHD death.

⁵ Definite or possible decompensated heart failure adjudicated by UNC.

⁶ Total CVD does not include aortic aneurysm or valvular heart disease.

⁷ Only women without a hysterectomy prior to the LLS exam are used to compute the annual rates of endometrial cancer.

⁸ Only one report of "other cancer" is counted per woman; however, the first of each type is adjudicated. Excludes non-melanoma skin cancer.

Table 4.4
Verified Outcomes¹ (Annualized Percentages) After Long Life Study (LLS) Visit
by Age at Visit for LLS Participants

Data as of: February 21, 2026

	Age at Long Life Study Visit			
	63-69	70-79	80-89	≥90
Number enrolled	723	3052	3688	412
Mean person years post LLS study visit	11.6	10.9	8.5	6.2
Cardiovascular outcomes				
CHD ²	30 (0.36%)	207 (0.63%)	499 (1.64%)	66 (2.63%)
CHD death ³	14 (0.17%)	107 (0.32%)	337 (1.08%)	56 (2.19%)
Clinical MI	18 (0.22%)	115 (0.36%)	212 (0.72%)	21 (0.89%)
CABG/PTCA	20 (0.24%)	124 (0.38%)	130 (0.43%)	5 (0.20%)
Carotid artery disease	1 (0.01%)	12 (0.04%)	16 (0.05%)	1 (0.04%)
Heart failure ⁴	22 (0.27%)	206 (0.63%)	544 (1.82%)	65 (2.66%)
Stroke	32 (0.39%)	218 (0.68%)	452 (1.54%)	57 (2.38%)
PAD	1 (0.01%)	34 (0.10%)	48 (0.16%)	4 (0.16%)
DVT	24 (0.30%)	110 (0.34%)	138 (0.46%)	11 (0.45%)
Pulmonary embolism	18 (0.22%)	96 (0.30%)	104 (0.34%)	9 (0.37%)
DVT/PE	33 (0.40%)	171 (0.53%)	197 (0.65%)	17 (0.69%)
Aortic aneurysm	2 (0.02%)	9 (0.03%)	12 (0.04%)	1 (0.04%)
Valvular heart disease	13 (0.16%)	82 (0.25%)	144 (0.47%)	18 (0.72%)
Total cardiovascular disease⁵	117 (1.49%)	813 (2.68%)	1646 (5.95%)	223 (9.71%)
Cancers				
Breast cancer	43 (0.55%)	171 (0.56%)	99 (0.34%)	4 (0.16%)
Invasive breast cancer	33 (0.42%)	151 (0.49%)	88 (0.30%)	4 (0.16%)
In situ breast cancer	10 (0.12%)	20 (0.06%)	13 (0.04%)	0 (0.00%)
Ovarian cancer	2 (0.02%)	16 (0.05%)	15 (0.05%)	2 (0.08%)
Endometrial cancer ⁶	0 (0.00%)	15 (0.09%)	12 (0.07%)	0 (0.00%)
Colorectal cancer	4 (0.05%)	30 (0.09%)	76 (0.24%)	2 (0.08%)
Other cancer ⁷	54 (0.66%)	307 (0.95%)	352 (1.15%)	21 (0.84%)
Total cancer	102 (1.30%)	513 (1.64%)	527 (1.77%)	29 (1.16%)
Fractures				
Hip fracture	13 (0.16%)	87 (0.27%)	343 (1.18%)	47 (2.11%)
Deaths				
Cardiovascular deaths	30 (0.36%)	311 (0.93%)	1046 (3.34%)	182 (7.12%)
Cancer deaths	33 (0.39%)	235 (0.71%)	362 (1.16%)	21 (0.82%)
Other known cause	13 (0.16%)	88 (0.26%)	288 (0.92%)	45 (1.76%)
Unknown cause	3 (0.04%)	5 (0.02%)	27 (0.09%)	4 (0.16%)
Not yet adjudicated	9 (0.11%)	58 (0.17%)	115 (0.37%)	9 (0.35%)
Total death	122 (1.46%)	1017 (3.05%)	2762 (8.82%)	392 (15.34%)

¹ Other than for heart failure, counts for individual outcomes exclude participants with a prevalent condition at LLS exam.

² CHD includes clinical MI and CHD death.

³ CHD death includes definite and possible CHD death.

⁴ Definite or possible decompensated heart failure adjudicated by UNC.

⁵ Total CVD does not include aortic aneurysm or valvular heart disease.

⁶ Only women without a hysterectomy prior to the LLS exam are used to compute the annual rates of endometrial cancer.

⁷ Only one report of "other cancer" is counted per woman; however, the first of each type is adjudicated. Excludes non-melanoma skin cancer.

Table 4.5
Self-Reported Outcomes¹ (Annualized Percentages) After Long Life Study (LLS) Visit
by Race/Ethnicity² for LLS Participants

Data as of: February 21, 2026

	Total	Race/Ethnicity			
		Hispanic/ Latina	Non-Hispanic Black/African American	Non-Hispanic White	More than one Race
Number enrolled	7875	1277	2483	3978	110
Mean person years post LLS study visit	9.6	10.8	10.3	8.8	9.1
Self-reported outcomes					
Diabetes (treated)	993 (1.79%)	170 (1.74%)	340 (2.02%)	464 (1.66%)	14 (2.06%)
Hypertension treated w/pills	794 (4.56%)	196 (4.81%)	176 (4.94%)	406 (4.27%)	12 (7.10%)
Intestinal polyps	587 (1.30%)	146 (1.79%)	235 (1.64%)	201 (0.93%)	5 (0.79%)
Lupus	37 (0.05%)	8 (0.06%)	12 (0.05%)	17 (0.05%)	0 (0.00%)
Osteoarthritis	1187 (7.21%)	193 (6.75%)	401 (7.52%)	577 (7.22%)	11 (5.62%)
Dementia ³	2298 (3.44%)	355 (2.92%)	589 (2.55%)	1316 (4.31%)	30 (3.44%)
Macular degeneration	1544 (2.54%)	236 (2.06%)	386 (1.74%)	896 (3.44%)	20 (2.31%)
Parkinson's disease	155 (0.21%)	33 (0.24%)	47 (0.19%)	73 (0.21%)	2 (0.21%)
COPD	969 (1.43%)	143 (1.15%)	312 (1.37%)	504 (1.61%)	10 (1.07%)

¹ Excludes participants with a prevalent condition at LLS exam.

² Long Life Study participants were selected from MRC participants which includes all WHI Hormone Trial participants and all Non-Hispanic Black/African American and Hispanic/Latina participants (identified from race/ethnicity collected on Form 2 at baseline) from the CT and OS. However, race/ethnicity is presented using the imputed Form 41 data and following the WHI Race/Ethnicity Task Force guidelines. Outcome counts for American Indian/Alaska Native (n=4), Asian or Native Hawaiian/Other Pacific Islander (n=1) and Other/Not Reported (n=22) race/ethnicities are not displayed due to small numbers.

³ Includes report of "Moderate or severe memory problems" or "Dementia or Alzheimer's".

Table 4.6
Self-Reported Outcomes¹ (Annualized Percentages) After Long Life Study (LLS) Visit
by Age at Visit for LLS Participants

Data as of: February 21, 2026

	Age at Long Life Study Visit			
	63-69	70-79	80-89	≥90
Number enrolled	723	3052	3688	412
Mean person years post LLS study visit	11.6	10.9	8.5	6.2
Self-reported outcomes				
Diabetes (treated)	105 (1.77%)	461 (1.98%)	396 (1.64%)	31 (1.46%)
Hypertension treated w/pills	105 (4.71%)	355 (4.62%)	309 (4.43%)	25 (4.86%)
Intestinal polyps	129 (2.69%)	318 (1.66%)	136 (0.70%)	4 (0.23%)
Lupus	4 (0.05%)	19 (0.06%)	13 (0.04%)	1 (0.04%)
Osteoarthritis	142 (6.32%)	558 (7.32%)	443 (7.29%)	44 (8.73%)
Dementia ²	100 (1.27%)	753 (2.49%)	1303 (4.89%)	142 (6.72%)
Macular degeneration	85 (1.11%)	553 (1.95%)	830 (3.56%)	76 (4.84%)
Parkinson's disease	12 (0.15%)	68 (0.21%)	71 (0.23%)	4 (0.16%)
COPD	87 (1.15%)	379 (1.27%)	474 (1.70%)	29 (1.22%)

¹ Excludes participants with a prevalent condition at LLS exam.

² Includes report of "Moderate or severe memory problems" or "Dementia or Alzheimer's".

Table 5.1
Long Life Study 2 (LLS2) Consent Status by Recruitment Cohort

Data as of: February 21, 2026

	Total		Recruitment Cohort ¹					
			LLS		LILAC		Non-LLS/LILAC MRC	
	N	%	N	%	N	%	N	%
Number eligible	15855	--	4172	--	5104	--	6579	--
Consented²	7508	47.4	2214	53.1	2655	52.0	2639	40.1
Completed visit³	5905	78.6	1837	83.0	2029	76.4	2039	77.3
Age at visit⁴								
75-79	722	12.2	263	14.3	206	10.2	253	12.4
80-84	2162	36.6	605	32.9	743	36.6	814	39.9
85-89	1835	31.1	445	24.2	696	34.3	694	34.0
90-94	878	14.9	366	19.9	287	14.1	225	11.0
95-99	278	4.7	141	7.7	91	4.5	46	2.3
100+	30	0.5	17	0.9	6	0.3	7	0.3
Race^{4,5}								
American Indian/Alaska Native	8	0.1	2	0.1	2	0.1	4	0.2
Asian	53	0.9	0	0.0	17	0.8	36	1.8
Native Hawaiian/Pacific Islander	2	0.0	0	0.0	0	0.0	2	0.1
Black/African American	1053	17.8	743	40.4	25	1.2	285	14.0
White	4581	77.6	969	52.7	1959	96.6	1653	81.1
More than one race	80	1.4	34	1.9	19	0.9	27	1.3
Unknown/Not reported	128	2.2	89	4.8	7	0.3	32	1.6
Ethnicity^{4,5}								
Not Hispanic/Latina	5409	91.6	1464	79.7	2007	98.9	1938	95.0
Hispanic/Latina	492	8.3	373	20.3	20	1.0	99	4.9
Unknown/Not reported	4	0.1	0	0.0	2	0.1	2	0.1
Completed blood draw⁴	5512	93.3	1711	93.1	1881	92.7	1920	94.2

¹ LLS and LILAC participants were recruited first. Due to low numbers, non-LLS/LILAC MRC participants were additionally recruited. Two thousand LILAC participants were funded for LLS2 through LILAC, 29 were funded through WHI.

² Percentage of eligible.

³ Percentage of consented.

⁴ Percentage of completed visit.

⁵ Long Life Study 2 participants are a subset of the Medical Records Cohort (MRC) which includes all WHI Hormone Trial participants and all Non-Hispanic Black/African American and Hispanic/Latina participants (identified from race/ethnicity collected on Form 2 at baseline) from the CT and OS. However, race and ethnicity are presented using the imputed Form 41 data and following the WHI Race/Ethnicity Task Force guidelines.

Table 5.2
Current Participation and Vital Status for Long Life Study 2 (LLS2) Participants

Data as of: February 21, 2026

Vital Status/Participation	LLS2 Participants (N=5,905)	
	N	%
Deceased	447	7.6
Alive: Current Participation ¹	5171	87.6
Alive: Recent Participation ²	173	2.9
Alive: Past/Unknown Participation	2	<0.1
Stopped Follow-Up ³	54	0.9
Lost to Follow-Up ⁴	58	1.0

¹ Participants who have filled in a Form 33 within the last 15 months.

² Participants who last filled in a Form 33 between 15 and 24 months ago.

³ Participants with codes 5 (no follow-up) or 8 (absolutely no follow-up) on Form 7 or 9.

⁴ Participants not in any of the above categories.

Table 5.3
Participant Characteristics for Long Life Study 2 (LLS2) Participants¹ by Race/Ethnicity

Data as of: February 21, 2026

	Race/Ethnicity									
	Total ²		Hispanic/ Latina		Non-Hispanic Black/African American		Non-Hispanic White		More than one Race	
	N	Mean (SD) or %	N	Mean (SD) or %	N	Mean (SD) or %	N	Mean (SD) or %	N	Mean (SD) or %
LLS2 participants with completed visits	5905		492		1045		4230		65	
Blood draw completed	5512	93.3	466	94.7	943	90.2	3979	94.1	57	87.7
Vision exam completed ³	3699	99.2	170	98.3	352	99.4	3104	99.3	30	100.0
Age at visit, years	5905	85.2 (5.1)	492	83.6 (5.1)	1045	84.0 (5.0)	4230	85.7 (5.0)	65	85.3 (5.2)
75-79	722	12.2	112	22.8	197	18.9	391	9.2	13	20.0
80-84	2162	36.6	195	39.6	414	39.6	1507	35.6	15	23.1
85-89	1835	31.1	115	23.4	284	27.2	1391	32.9	25	38.5
90-94	878	14.9	54	11.0	111	10.6	695	16.4	8	12.3
≥95	308	5.2	16	3.3	39	3.7	246	5.8	4	6.2
Education	5870	--	486	--	1039	--	4208	--	65	--
0-8 years	29	0.5	8	1.6	9	0.9	12	0.3	0	0.0
Some high school	91	1.6	16	3.3	41	3.9	32	0.8	2	3.1
High school diploma/GED	688	11.7	67	13.8	105	10.1	505	12.0	7	10.8
School after high school	2029	34.6	213	43.8	379	36.5	1394	33.1	28	43.1
College degree or higher	3033	51.7	182	37.4	505	48.6	2265	53.8	28	43.1
Body-mass Index (BMI), kg/m ²	5439	27.1 (5.6)	462	27.0 (4.9)	942	28.7 (6.0)	3912	26.7 (5.5)	56	27.8 (6.9)
< 18.5	135	2.5	6	1.3	14	1.5	112	2.9	2	3.6
18.5 - 24.9	2013	37.0	173	37.4	251	26.6	1536	39.3	17	30.4
25.0 - 29.9	1930	35.5	173	37.4	352	37.4	1357	34.7	22	39.3
30.0 - 34.9	897	16.5	83	18.0	195	20.7	607	15.5	8	14.3
35.0 - 39.9	312	5.7	18	3.9	80	8.5	209	5.3	5	8.9
≥ 40	152	2.8	9	1.9	50	5.3	91	2.3	2	3.6

¹ Long Life Study 2 participants are a subset of the Medical Records Cohort (MRC) which includes all WHI Hormone Trial participants and all Non-Hispanic Black/African American and Hispanic/Latina participants (identified from race/ethnicity collected on Form 2 at baseline) from the CT and OS. However, race/ethnicity is presented using the imputed Form 41 data and following the WHI Race/Ethnicity Task Force guidelines.

² Separate columns for American Indian/Alaska Native (n= 5), Asian or Native Hawaiian/Other Pacific Islander (n= 53) and Other/Not Reported (n= 15) race/ethnicities are not displayed due to small numbers, however these participants are included in the Total column.

³ Vision screening was not included in the exam until Form 301, version 5, with implementation in the field beginning on 6/21/2023. The number of participants eligible to be screened is n = 3727 overall (n = 173 for Hispanic/Latina, n = 354 for Non-Hispanic Black/African American, n = 3127 for Non-Hispanic White, and n = 30 for More than one Race).

Table 5.3 (continued)
Participant Characteristics for Long Life Study 2 (LLS2) Participants¹ by Race/Ethnicity

Data as of: February 21, 2026

	Race/Ethnicity									
	Total ²		Hispanic/ Latina		Non-Hispanic Black/African American		Non-Hispanic White		More than one Race	
	N	Mean (SD) or %	N	Mean (SD) or %	N	Mean (SD) or %	N	Mean (SD) or %	N	Mean (SD) or %
Kyphosis	5548	--	467	--	962	--	3992	--	57	--
No kyphosis (0)	1860	33.5	202	43.3	322	33.5	1287	32.2	17	29.8
Slight kyphosis (1)	2587	46.6	209	44.8	457	47.5	1872	46.9	23	40.4
Moderate kyphosis (2)	957	17.2	48	10.3	150	15.6	732	18.3	15	26.3
Severe kyphosis (3)	144	2.6	8	1.7	33	3.4	101	2.5	2	3.5
Systolic blood pressure, mmHg	5830	128.1 (15.6)	490	126.9 (14.6)	1026	131.5 (15.3)	4177	127.5 (15.7)	64	124.7 (14.2)
≤120	1887	32.4	171	34.9	227	22.1	1439	34.5	26	40.6
120 - 140	2834	48.6	239	48.8	551	53.7	1984	47.5	27	42.2
>140	1109	19.0	80	16.3	248	24.2	754	18.1	11	17.2
Diastolic blood pressure, mmHg	5830	72.8 (8.9)	490	71.7 (7.7)	1026	73.3 (9.4)	4177	72.8 (8.9)	64	73.8 (10.0)
<80	4475	76.8	399	81.4	746	72.7	3230	77.3	49	76.6
80-89	1166	20.0	88	18.0	237	23.1	815	19.5	10	15.6
≥90	189	3.2	3	0.6	43	4.2	132	3.2	5	7.8
Grip strength, kg	5585	13.7 (6.1)	475	13.3 (5.3)	972	15.4 (6.7)	4007	13.3 (5.9)	61	13.3 (6.0)
Repeated chair stands, #stands/sec	4482	0.37 (0.19)	411	0.39 (0.20)	751	0.33 (0.17)	3216	0.38 (0.20)	43	0.31 (0.18)
Walking pace, m/sec	4826	0.58 (0.24)	421	0.60 (0.24)	754	0.48 (0.24)	3543	0.60 (0.23)	45	0.53 (0.22)
Assistive device used on walk test	509	10.6	34	8.1	70	9.3	395	11.2	5	11.4
Look AHEAD SPPB ³	3950	1.6 (0.5)	346	1.6 (0.5)	621	1.4 (0.5)	2897	1.6 (0.5)	32	1.3 (0.5)
EPESE SPPB ⁴	4264	7.5 (2.6)	374	7.8 (2.5)	670	6.8 (2.7)	3123	7.6 (2.6)	40	6.3 (2.7)

¹ Long Life Study 2 participants are a subset of the Medical Records Cohort (MRC) which includes all WHI Hormone Trial participants and all Non-Hispanic Black/African American and Hispanic/Latina participants (identified from race/ethnicity collected on Form 2 at baseline) from the CT and OS. However, race/ethnicity is presented using the imputed Form 41 data and following the WHI Race/Ethnicity Task Force guidelines.

² Separate columns for American Indian/Alaska Native (n=5), Asian or Native Hawaiian/Other Pacific Islander (n= 53) and Other/Not Reported (n= 15) race/ethnicities are not displayed due to small numbers, however these participants are included in the Total column.

³ The Look AHEAD Short Physical Performance Battery (SPPB) ranges from 0 to 3, with higher scores indicating better physical performance.

⁴ The Established Populations for the Epidemiologic Studies of the Eldery (EPESE) Short Physical Performance Battery (SPPB) ranges from 0 to 12, with higher scores indicating better physical performance.

Table 5.4
Participant Characteristics for Long Life Study 2 (LLS2) Participants by Recruitment Cohort

Data as of: February 21, 2026

	Recruitment Cohort ¹							
	Total		LLS		LILAC		Non-LLS/LILAC MRC	
	N	Mean (SD) or %	N	Mean (SD) or %	N	Mean (SD) or %	N	Mean (SD) or %
LLS2 participants with completed visits	5905		1837		2029		2039	
Blood draw completed	5512	93.3	1711	93.1	1881	92.7	1920	94.2
Vision exam completed ²	3699	99.2	607	99.3	1513	99.3	1579	99.2
Age at visit, years	5905	85.2 (5.1)	1837	85.8 (5.9)	2029	85.4 (4.8)	2039	84.6 (4.4)
75-79	722	12.2	263	14.3	206	10.2	253	12.4
80-84	2162	36.6	605	32.9	743	36.6	814	39.9
85-89	1835	31.1	445	24.2	696	34.3	694	34.0
90-94	878	14.9	366	19.9	287	14.1	225	11.0
≥95	308	5.2	158	8.6	97	4.8	53	2.6
Education	5870	--	1828	--	2016	--	2026	--
0-8 years	29	0.5	17	0.9	2	0.1	10	0.5
Some high school	91	1.6	46	2.5	12	0.6	33	1.6
High school diploma/GED	688	11.7	238	13.0	165	8.2	285	14.1
School after high school	2029	34.6	705	38.6	581	28.8	743	36.7
College degree or higher	3033	51.7	822	45.0	1256	62.3	955	47.1
Body-mass Index (BMI), kg/m ²	5439	27.1 (5.6)	1666	27.6 (5.8)	1881	26.3 (5.3)	1892	27.4 (5.6)
< 18.5	135	2.5	33	2.0	51	2.7	51	2.7
18.5 - 24.9	2013	37.0	566	34.0	799	42.5	648	34.2
25.0 - 29.9	1930	35.5	617	37.0	647	34.4	666	35.2
30.0 - 34.9	897	16.5	275	16.5	262	13.9	360	19.0
35.0 - 39.9	312	5.7	113	6.8	87	4.6	112	5.9
≥ 40	152	2.8	62	3.7	35	1.9	55	2.9
Kyphosis	5548	--	1704	--	1921	--	1923	--
No kyphosis (0)	1860	33.5	572	33.6	620	32.3	668	34.7
Slight kyphosis (1)	2587	46.6	790	46.4	911	47.4	886	46.1
Moderate kyphosis (2)	957	17.2	291	17.1	336	17.5	330	17.2
Severe kyphosis (3)	144	2.6	51	3.0	54	2.8	39	2.0

¹ LLS and LILAC participants were recruited first. Due to low numbers, non-LLS/LILAC MRC participants were additionally recruited. Two thousand LILAC participants were funded for LLS2 through LILAC, 29 were funded through WHI.

² Vision screening was not included in the exam until Form 301, version 5, with implementation in the field beginning on 6/21/2023. The number of participants eligible to be screened is n = 3727 overall (n = 611 for LLS cohort, n = 1524 for LILAC cohort, and n = 1592 for non-LLS/LILAC MRC cohort).

Table 5.4 (continued)
Participant Characteristics for Long Life Study 2 (LLS2) Participants by Recruitment Cohort

Data as of: February 21, 2026

	Recruitment Cohort ¹							
	Total		LLS		LILAC		Non-LLS/LILAC MRC	
	N	Mean (SD) or %	N	Mean (SD) or %	N	Mean (SD) or %	N	Mean (SD) or %
LLS2 participants with completed visits	5905		1837		2029		2039	
Blood draw completed	5512	93.3	1711	93.1	1881	92.7	1920	94.2
Vision exam completed ²	3699	99.2	607	99.3	1513	99.3	1579	99.2
Systolic blood pressure, mmHg	5830	128.1 (15.6)	1819	129.1 (15.4)	2002	127.3 (15.3)	2009	128.1 (16.2)
≤120	1887	32.4	526	28.9	682	34.1	679	33.8
120 - 140	2834	48.6	923	50.7	955	47.7	956	47.6
>140	1109	19.0	370	20.3	365	18.2	374	18.6
Diastolic blood pressure, mmHg	5830	72.8 (8.9)	1819	72.6 (8.7)	2002	72.7 (9.0)	2009	73.1 (9.1)
<80	4475	76.8	1418	78.0	1542	77.0	1515	75.4
80-89	1166	20.0	350	19.2	392	19.6	424	21.1
≥90	189	3.2	51	2.8	68	3.4	70	3.5
Grip strength, kg	5585	13.7 (6.1)	1725	13.7 (6.3)	1924	13.5 (5.9)	1936	13.8 (6.0)
Repeated chair stands, #stands/sec	4482	0.37 (0.19)	1327	0.35 (0.18)	1572	0.38 (0.20)	1583	0.38 (0.20)
Walking pace, m/sec	4826	0.58 (0.24)	1418	0.53 (0.24)	1725	0.60 (0.24)	1683	0.60 (0.24)
Assistive device used on walk test	509	10.6	157	11.1	178	10.3	174	10.4
Look AHEAD SPPB ³	3950	1.6 (0.5)	1113	1.5 (0.5)	1430	1.6 (0.5)	1407	1.6 (0.5)
EPESSE SPPB ⁴	4264	7.5 (2.6)	1229	7.1 (2.7)	1524	7.8 (2.6)	1511	7.6 (2.6)

¹ LLS and LILAC participants were recruited first. Due to low numbers, non-LLS/LILAC MRC participants were additionally recruited. Two thousand LILAC participants were funded for LLS2 through LILAC, 29 were funded through WHI.

² Vision screening was not included in the exam until Form 301, version 5, with implementation in the field beginning on 6/21/2023. The number of participants eligible to be screened is n = 3727 overall (n = 611 for LLS cohort, n = 1524 for LILAC cohort, and n = 1592 for non-LLS/LILAC MRC cohort).

³ The Look AHEAD Short Physical Performance Battery (SPPB) ranges from 0 to 3, with higher scores indicating better physical performance.

⁴ The Established Populations for the Epidemiologic Studies of the Elderly (EPESSE) Short Physical Performance Battery (SPPB) ranges from 0 to 12, with higher scores indicating better physical performance.

Table 5.5
CBC and Biomarker Results for Long Life Study 2 (LLS2) Participants¹ at the LLS2 Visit by Race/Ethnicity

Data as of: February 15, 2025

	Race/Ethnicity														
	Total ²			Hispanic/ Latina		Non-Hispanic Black/African American			Non-Hispanic White			More than one Race			
	N	Mean	(SD)	N	Mean (SD)	N	Mean (SD)	N	Mean (SD)	N	Mean (SD)				
CBC															
Hemoglobin, g/dL	5173	13.0	(1.3)	434	12.9	(1.3)	886	12.3	(1.3)	3737	13.1	(1.3)	53	12.8	(1.3)
Hematocrit, %	5174	39.8	(3.8)	434	39.4	(3.8)	886	38.3	(3.8)	3738	40.2	(3.7)	53	39.2	(3.9)
Red Blood Cell Count, 10 ⁶ /ul	5171	4.3	(0.5)	434	4.3	(0.5)	886	4.3	(0.5)	3735	4.3	(0.5)	53	4.3	(0.5)
Platelet Count, 10 ³ /ul [^]	5174	228.8	(66.1)	434	232.9	(65.5)	886	228.8	(67.2)	3738	228.4	(66.0)	53	216.9	(67.6)
White Blood Cell Count, 10 ³ /ul [^]	5174	5.9	(1.8)	434	5.8	(1.6)	886	5.4	(1.8)	3738	6.1	(1.8)	53	6.1	(1.7)
Neutrophil Count, 10 ³ /ul [^]	5161	3.3	(1.6)	433	3.1	(1.5)	883	2.7	(1.6)	3729	3.4	(1.5)	53	3.4	(1.5)
Neutrophil, %	5167	56.7	(11.8)	433	55.4	(11.7)	883	51.8	(12.6)	3735	58.0	(11.3)	53	57.9	(12.1)
Basophil Count, 10 ³ /ul	5167	0.1	(0.0)	433	0.1	(0.0)	883	0.0	(0.0)	3735	0.1	(0.0)	53	0.0	(0.0)
Basophil, %	5167	1.0	(0.6)	433	1.0	(0.5)	883	0.9	(0.7)	3735	1.0	(0.6)	53	0.9	(0.6)
Eosinophil Count, 10 ³ /ul	5167	0.2	(0.2)	433	0.2	(0.2)	883	0.2	(0.1)	3735	0.2	(0.2)	53	0.2	(0.1)
Eosinophil, %	5167	3.1	(2.4)	433	3.4	(3.3)	883	3.1	(2.4)	3735	3.1	(2.2)	53	2.8	(2.0)
Monocyte Count, 10 ³ /ul [^]	5165	0.5	(0.2)	433	0.5	(0.2)	883	0.5	(0.2)	3733	0.6	(0.2)	53	0.5	(0.2)
Monocyte, %	5167	9.6	(2.9)	433	9.2	(2.6)	883	9.6	(3.2)	3735	9.7	(2.9)	53	9.3	(2.2)
Immature Granulocyte Count, 10 ³ /ul	5167	0.0	(0.0)	433	0.0	(0.1)	883	0.0	(0.0)	3735	0.0	(0.0)	53	0.0	(0.0)
Immature Granulocyte Fraction, %	5167	0.6	(0.9)	433	0.8	(1.1)	883	0.6	(0.9)	3735	0.6	(0.9)	53	0.6	(0.9)
Lymphocyte Count, 10 ³ /ul [^]	5167	1.6	(0.7)	433	1.7	(0.6)	883	1.7	(0.7)	3735	1.6	(0.7)	53	1.6	(0.7)
Lymphocyte, % [^]	5167	27.1	(9.8)	433	28.9	(9.2)	883	32.2	(10.8)	3735	25.8	(9.2)	53	26.4	(11.1)
Nucleated RBC Count, 10 ³ /ul	5151	0.0	(0.1)	434	0.0	(0.0)	881	0.0	(0.2)	3720	0.0	(0.0)	53	0.0	(0.0)
Nucleated RBC, %	5151	0.0	(0.4)	434	0.0	(0.1)	881	0.0	(1.0)	3720	0.0	(0.1)	53	0.0	(0.0)
Mean Corpuscular Hemoglobin, pg	5166	30.2	(2.2)	432	30.1	(2.1)	886	29.0	(2.5)	3732	30.5	(2.0)	53	30.3	(2.6)
Mean Corpuscular Hemoglobin, g/dL	5166	32.6	(1.1)	432	32.6	(1.1)	886	32.3	(1.2)	3732	32.7	(1.0)	53	32.7	(1.1)
Mean Corpuscular Volume, fL	5166	92.6	(5.5)	432	92.3	(5.2)	886	89.9	(6.6)	3732	93.4	(5.0)	53	92.8	(7.1)
Mean Platelet Volume, fL	5110	11.3	(1.0)	432	11.5	(1.0)	865	11.6	(1.0)	3700	11.2	(1.0)	52	11.3	(0.9)
Red Cell Distribution Width - CV, % [^]	5167	13.7	(1.2)	432	13.7	(1.3)	886	14.2	(1.4)	3733	13.6	(1.2)	53	13.8	(1.2)
Red Cell Distribution Width – Std. Deviation	5171	46.3	(4.2)	434	46.2	(4.4)	885	46.2	(4.4)	3736	46.4	(4.2)	53	46.7	(5.0)

¹ Long Life Study 2 participants are a subset of the Medical Records Cohort (MRC) which includes all WHI Hormone Trial participants and all Non-Hispanic Black/African American and Hispanic/Latina participants (identified from race/ethnicity collected on Form 2 at baseline) from the CT and OS. However, race/ethnicity is presented using the imputed Form 41 data and following the WHI Race/Ethnicity Task Force guidelines.
² Separate columns for American Indian/Alaska Native, Asian or Native Hawaiian/Other Pacific Islander and Other/Not Reported race/ethnicities are not displayed due to small numbers, however these participants are included in the Total column.

[^] Geometric mean and SD.

Table 5.5 (continued)
CBC and Biomarker Results for Long Life Study 2 (LLS2) Participants¹ at the LLS2 Visit by Race/Ethnicity

Data as of: February 15, 2025

	Race/Ethnicity														
	Total ²			Hispanic/ Latina			Non-Hispanic Black/African American			Non-Hispanic White			More than one Race		
	N	Mean	(SD)	N	Mean	(SD)	N	Mean	(SD)	N	Mean	(SD)	N	Mean	(SD)
Inflammatory, lipids and other biomarkers															
C-reactive protein (high sensitivity), mg/L [^]	5438	1.9	(2.0)	460	1.8	(1.9)	929	2.1	(2.5)	3928	1.8	(1.9)	57	1.8	(2.1)
Creatinine, mg/dL [^]	5436	0.9	(0.2)	460	0.9	(0.2)	930	1.0	(0.3)	3925	0.9	(0.2)	57	0.9	(0.2)
Insulin, pmol/L [^]	5330	67.1	(55.1)	455	77.1	(62.1)	908	82.6	(73.8)	3849	62.9	(50.0)	57	77.6	(73.7)
Glucose, mg/dL [^]	5432	99.0	(22.5)	460	102.7	(27.4)	930	101.2	(26.5)	3921	98.0	(20.9)	57	100.0	(22.5)
HDL cholesterol, mg/dL	5436	65.4	(17.1)	460	63.1	(17.9)	930	65.7	(16.4)	3925	65.5	(17.2)	57	63.6	(15.8)
LDL cholesterol, mg/dL	5415	98.3	(34.8)	452	95.2	(35.0)	930	97.9	(34.8)	3913	98.6	(34.7)	57	99.6	(41.2)
Total Cholesterol, mg/dL	5436	185.4	(40.6)	460	183.1	(42.8)	930	181.9	(40.7)	3925	186.3	(40.2)	57	185.7	(45.7)
Triglyceride, mg/dL [^]	5433	99.1	(41.9)	460	111.9	(53.2)	930	84.4	(33.7)	3922	101.3	(41.6)	57	103.9	(41.3)

¹ Long Life Study 2 participants are a subset of the Medical Records Cohort (MRC) which includes all WHI Hormone Trial participants and all Non-Hispanic Black/African American and Hispanic/Latina participants (identified from race/ethnicity collected on Form 2 at baseline) from the CT and OS. However, race/ethnicity is presented using the imputed Form 41 data and following the WHI Race/Ethnicity Task Force guidelines.

² Separate columns for American Indian/Alaska Native, Asian or Native Hawaiian/Other Pacific Islander and Other/Not Reported race/ethnicities are not displayed due to small numbers, however these participants are included in the Total column.

[^] Geometric mean and SD.

Table 5.6
CBC and Biomarker Results for Long Life Study 2 (LLS2) Participants at the LLS2 Visit by Recruitment Cohort

Data as of: February 21, 2026

	Recruitment Cohort ¹											
	Total			LLS			LILAC			Non-LLS/LILAC MRC		
	N	Mean	(SD)	N	Mean	(SD)	N	Mean	(SD)	N	Mean	(SD)
CBC												
Hemoglobin, g/dL	5173	13.0	(1.3)	1591	12.7	(1.3)	1775	13.2	(1.3)	1807	13.0	(1.4)
Hematocrit, %	5174	39.8	(3.8)	1591	39.1	(3.8)	1776	40.2	(3.7)	1807	39.9	(3.9)
Red Blood Cell Count, 10 ⁶ /ul	5171	4.3	(0.5)	1591	4.3	(0.5)	1774	4.3	(0.5)	1806	4.3	(0.5)
Platelet Count, 10 ³ /ul [^]	5174	228.8	(66.1)	1591	226.4	(67.5)	1776	226.9	(65.6)	1807	233.0	(65.1)
White Blood Cell Count, 10 ³ /ul [^]	5174	5.9	(1.8)	1591	5.7	(1.8)	1776	6.0	(1.8)	1807	6.0	(1.8)
Neutrophil Count, 10 ³ /ul [^]	5161	3.3	(1.6)	1583	3.0	(1.7)	1774	3.4	(1.5)	1804	3.4	(1.5)
Neutrophil, %	5167	56.7	(11.8)	1585	54.7	(12.8)	1775	58.3	(11.0)	1807	57.0	(11.3)
Basophil Count, 10 ³ /ul	5167	0.1	(0.0)	1585	0.1	(0.0)	1775	0.1	(0.0)	1807	0.1	(0.0)
Basophil, %	5167	1.0	(0.6)	1585	1.0	(0.6)	1775	1.0	(0.6)	1807	1.0	(0.6)
Eosinophil Count, 10 ³ /ul	5167	0.2	(0.2)	1585	0.2	(0.1)	1775	0.2	(0.2)	1807	0.2	(0.2)
Eosinophil, %	5167	3.1	(2.4)	1585	3.1	(2.4)	1775	3.2	(2.4)	1807	3.1	(2.3)
Monocyte Count, 10 ³ /ul [^]	5165	0.5	(0.2)	1584	0.5	(0.2)	1774	0.6	(0.2)	1807	0.5	(0.2)
Monocyte, %	5167	9.6	(2.9)	1585	9.6	(3.0)	1775	9.8	(3.0)	1807	9.5	(2.8)
Immature Granulocyte Count, 10 ³ /ul	5167	0.0	(0.0)	1585	0.0	(0.1)	1775	0.0	(0.0)	1807	0.0	(0.1)
Immature Granulocyte Fraction, %	5167	0.6	(0.9)	1585	0.7	(1.0)	1775	0.6	(0.9)	1807	0.6	(0.9)
Lymphocyte Count, 10 ³ /ul [^]	5167	1.6	(0.7)	1585	1.7	(0.7)	1775	1.5	(0.7)	1807	1.6	(0.7)
Lymphocyte, % [^]	5167	27.1	(9.8)	1585	29.0	(10.5)	1775	25.4	(9.0)	1807	27.1	(9.6)
Nucleated RBC Count, 10 ³ /ul	5151	0.0	(0.1)	1585	0.0	(0.1)	1768	0.0	(0.0)	1798	0.0	(0.0)
Nucleated RBC, %	5151	0.0	(0.4)	1585	0.0	(0.8)	1768	0.0	(0.1)	1798	0.0	(0.1)
Mean Corpuscular Hemoglobin, pg	5166	30.2	(2.2)	1591	29.8	(2.3)	1773	30.6	(2.1)	1802	30.2	(2.1)
Mean Corpuscular Hemoglobin, g/dL	5166	32.6	(1.1)	1591	32.5	(1.1)	1773	32.7	(1.0)	1802	32.7	(1.1)
Mean Corpuscular Volume, fL	5166	92.6	(5.5)	1591	91.8	(6.0)	1773	93.5	(5.3)	1802	92.5	(5.2)
Mean Platelet Volume, fL	5110	11.3	(1.0)	1571	11.5	(1.0)	1752	11.2	(1.0)	1787	11.2	(1.0)
Red Cell Distribution Width - CV, % [^]	5167	13.7	(1.2)	1591	13.9	(1.4)	1774	13.6	(1.2)	1802	13.7	(1.2)
Red Cell Distribution Width – Std. Deviation	5171	46.3	(4.2)	1590	46.4	(4.5)	1775	46.5	(4.2)	1806	46.1	(3.9)

¹ LLS and LILAC participants were recruited first. Due to low numbers, non-LLS/LILAC MRC participants were additionally recruited. Two thousand LILAC participants were funded for LLS2 through LILAC, 29 were funded through WHI.

[^] Geometric mean and SD.

Table 5.6 (continued)
CBC and Biomarker Results for Long Life Study 2 (LLS2) Participants at the LLS2 Visit by Recruitment Cohort

Data as of: February 21, 2026

	Recruitment Cohort ¹											
	Total			LLS			LILAC			Non-LLS/LILAC MRC		
	N	Mean	(SD)	N	Mean	(SD)	N	Mean	(SD)	N	Mean	(SD)
Inflammatory, lipids and other biomarkers												
C-reactive protein (high sensitivity), mg/L [^]	5438	1.9	(2.0)	1690	1.9	(2.1)	1853	1.8	(2.0)	1853	1.8	(2.0)
Creatinine, mg/dL [^]	5436	0.9	(0.2)	1691	0.9	(0.3)	1850	0.9	(0.2)	1850	0.9	(0.2)
Insulin, pmol/L [^]	5330	67.1	(55.1)	1662	74.0	(64.3)	1814	64.0	(50.4)	1814	64.0	(50.4)
Glucose, mg/dL [^]	5432	99.0	(22.5)	1689	100.2	(24.4)	1849	97.6	(19.8)	1849	97.6	(19.8)
HDL cholesterol, mg/dL	5436	65.4	(17.1)	1691	64.8	(16.8)	1850	66.3	(17.4)	1850	66.3	(17.4)
LDL cholesterol, mg/dL	5415	98.3	(34.8)	1681	97.6	(34.6)	1846	98.2	(34.8)	1846	98.2	(34.8)
Total Cholesterol, mg/dL	5436	185.4	(40.6)	1691	183.5	(40.9)	1850	186.7	(40.5)	1850	186.7	(40.5)
Triglyceride, mg/dL [^]	5433	99.1	(41.9)	1689	96.2	(41.5)	1850	101.9	(42.3)	1850	101.9	(42.3)

¹ LLS and LILAC participants were recruited first. Due to low numbers, non-LLS/LILAC MRC participants were additionally recruited. Two thousand LILAC participants were funded for LLS2 through LILAC, 29 were funded through WHI.

[^] Geometric mean and SD.

Table 5.7
Verified Outcomes¹ After Long Life Study 2 (LLS2) Visit for LLS2 Participants

Data as of: February 21, 2026

	Total
Number enrolled	5905
Mean person years post LLS2 study visit	1.8
Cardiovascular outcomes	
CHD ²	56
CHD death ³	28
Clinical MI	29
CABG/PTCA	25
Heart failure ⁴	67
Stroke	66
DVT	23
Pulmonary embolism	16
DVT/PE	34
Valvular heart disease	28
Total cardiovascular disease⁵	225
Cancers	
Breast cancer	33
Invasive breast cancer	28
Colorectal cancer	11
Total cancer	133
Fractures	
Hip Fracture	49
Total death	447

¹ Other than for heart failure, counts for individual outcomes exclude participants with a prevalent condition at LLS2 exam.

² CHD includes clinical MI and CHD death.

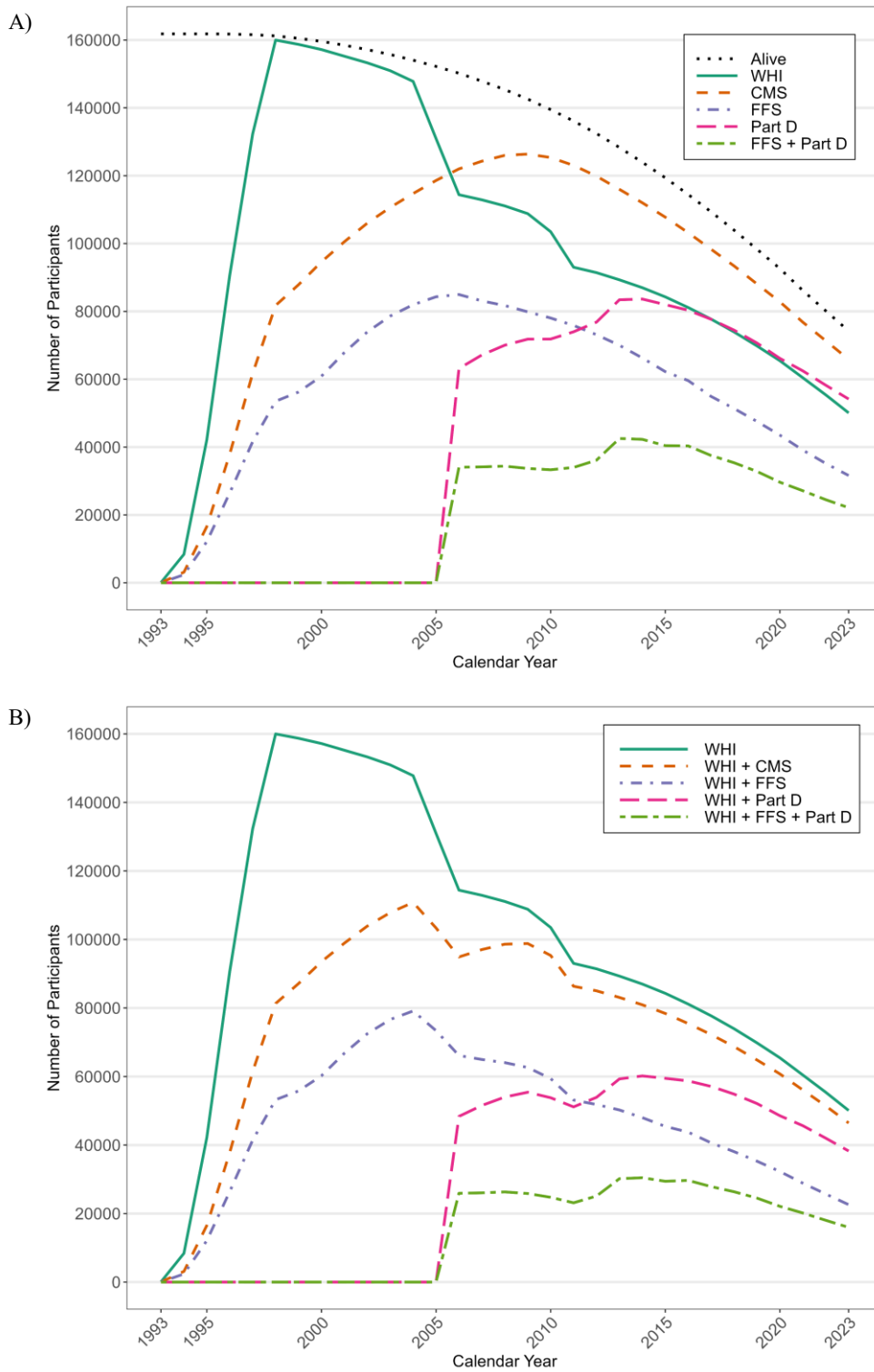
³ CHD death includes definite and possible CHD death.

⁴ Definite or possible decompensated heart failure adjudicated by UNC.

⁵ Total CVD does not include aortic aneurysm or valvular heart disease.

Figure 6.1
CMS Enrollment¹ for WHI Participants by Calendar Year²
for All CMS-Enrolled Participants (panel A) and Restricted to Participants with Active WHI Participation³ (panel B)

Data as of: December 31, 2023



¹ Enrollments broken down by CMS component: CMS = enrollment in any Medicare component (Part A, Part B, or Part C), FFS = enrollment in both fee-for-service components (Part A + Part B), Part D = enrollment in supplemental drug coverage (Part D).

² Participation for WHI and enrollment counts for CMS are based on a participant having any coverage or participation within the given calendar year.

³ Active participation is defined as current (Form 33 within 15 months) or recent (Form 33 between 15 and 24 months ago) follow-up.

Table 6.1
Available CMS Follow-Up for WHI Participants in 5 Year Increments

Data as of: December 31, 2023

Medicare Fee-For-Service A+B						Medicare Part D					
Interval ¹	Enrolled at Interval Start	Continuous Enrollment ²		Continuous Enrollment to End of Interval ³		Interval ¹	Enrolled at Interval Start	Continuous Enrollment ²		Continuous Enrollment to End of Interval ³	
	N	N	%	N	%		N	N	%	N	%
2005 - 2009	79621	66867	84.0	59867	75.2	2006 ⁴ - 2009	43475	41055	94.4	37298	85.8
2005 - 2014		59483	74.7	42755	53.7	2006 ⁴ - 2014		38876	89.4	28793	66.2
2005 - 2019		53868	67.7	26261	33.0	2006 ⁴ - 2019		37986	87.4	20133	46.3
2005 - 2023		51102	64.2	15384	19.3	2006 ⁴ - 2023		37469	86.2	13289	30.6
2010 - 2014	75901	66944	88.2	56017	73.8	2010 - 2014	69656	66516	95.5	56184	80.7
2010 - 2019		59230	78.0	36080	47.5	2010 - 2019		64609	92.8	41240	59.2
2010 - 2023		55055	72.5	22577	29.8	2010 - 2023		63541	91.2	29088	41.8
2015 - 2019	61368	53739	87.6	40501	66.0	2015 - 2019	81063	78237	96.5	60391	74.5
2015 - 2023		48823	79.6	25518	41.6	2015 - 2023		76018	93.8	42682	52.7
2020 - 2023	43115	38378	89.0	27594	64.0	2020 - 2023	65759	64050	97.4	47119	71.7

¹Follow-up interval defined as January 1st of the interval start year to December 31st of the interval end year.

²Calculated as the number and percentage of participants enrolled at the start of the interval through the minimum of death and the end of the interval.

³Calculated as the number and percentage of participants enrolled for the entire duration of the interval.

⁴Medicare Part D became available for enrollment on 1/1/2006.

Table 7.1
Life and Longevity After Cancer (LILAC) Study Participants and Cancer Treatments Received by Cancer Site and Selected Characteristics

Data as of: February 21, 2026

	Total N	Cancer-Directed Surgery ¹				Chemotherapy/Targeted Therapy				Radiation Therapy			
		Surgery Documentation Available ²	Derived from CMS ³		Surgery Performed	Chemotherapy Documentation Available ²	Derived from CMS ³		Chemotherapy Received	Radiation Documentation Available ²	Derived from CMS ³		Radiation Received
			N	%			N	%			N	%	
Total participants	17128	15597	34	12575	80.6	15685	36	5697	36.3	15637	36	6060	38.8
Cancer⁴													
Breast ⁵	7813	7287	39	7027	96.4	7001	42	1850	26.4	6974	42	4368	62.6
Colorectal	2015	1951	33	1787	91.6	1883	36	717	38.1	1888	35	137	7.3
Endometrial	1260	1173	16	1130	96.3	1119	21	196	17.5	1118	21	374	33.5
Ovarian/FT/PP ⁶	945	918	32	751	81.8	890	34	766	86.1	874	36	25	2.9
Lung	2383	2316	26	815	35.2	2250	29	1032	45.9	2249	29	918	40.8
Melanoma	889	837	32	816	97.5	821	33	52	6.3	821	33	13	1.6
NHL/MF ⁷	1187	1133	35	264	23.3	1118	36	778	69.6	1096	38	222	20.3
Leukemia	659	--	--	--	--	622	29	318	51.1	635	29	7	1.1
Age at diagnosis													
50-64	2034	1489	2	1337	89.8	1394	3	671	48.1	1386	3	723	52.2
65-69	2670	2434	43	2123	87.2	2465	45	1069	43.4	2447	46	1074	43.9
70-74	3937	3675	40	3093	84.2	3720	42	1465	39.4	3708	42	1603	43.2
75-79	3947	3734	38	3032	81.2	3781	40	1291	34.1	3772	40	1456	38.6
80-84	2778	2634	32	1993	75.7	2640	34	798	30.2	2639	34	854	32.4
85-89	1343	1243	29	808	65.0	1284	32	333	25.9	1283	32	272	21.2
≥90	419	388	23	189	48.7	401	26	70	17.5	402	26	78	19.4
Year of diagnosis													
<2000	1828	1107	89	1008	91.1	1140	90	399	35.0	1137	90	512	45.0
2000-2004	5076	4841	35	4095	84.6	4655	39	1848	39.7	4622	40	2024	43.8
2005-2009	4120	3903	34	3118	79.9	3979	35	1547	38.9	3970	35	1535	38.7
2010-2014	3298	3113	19	2434	78.2	3211	21	1057	32.9	3212	21	1136	35.4
2015-2019	2185	2050	26	1500	73.2	2099	27	682	32.5	2100	27	677	32.2
2020-2022	621	583	21	420	72.0	601	22	164	27.3	596	22	176	29.5

¹ Participants with leukemia only were excluded from the data items for cancer-directed surgery.

² Documentation about whether the participant received surgery, chemotherapy, or radiation as part of their cancer treatment was available from Medical Record Abstraction or CMS Medicare fee-for-service A+B claims data.

³ CMS is the U.S. Centers for Medicare and Medicaid Services.

⁴ Total number of cancers is greater than the total number of participants because some women were diagnosed with more than one LILAC-designated cancer on the same date.

⁵ Of N=5835 hormone-receptor positive breast cancer survivors with Medical Record Abstraction, LILAC baseline questionnaire, or Medicare Part D claims, N=4472 (77%) received endocrine-targeted/hormonal therapy.

⁶ Includes ovarian, fallopian tube FT, and primary peritoneal PP cancers.

⁷ Includes non-Hodgkin lymphoma NHL and mycosis fungoides MF.

Table 7.1 (continued)
Life and Longevity After Cancer (LILAC) Study Participants and Cancer Treatments Received by Cancer Site and Selected Characteristics

Data as of: February 21, 2026

	Total N	Cancer-Directed Surgery ¹				Chemotherapy/Targeted Therapy				Radiation Therapy			
		Surgery Documentation Available ²		Derived from CMS ³ Surgery Performed		Chemotherapy Documentation Available ²		Derived from CMS ³ Chemotherapy Received		Radiation Documentation Available ²		Derived from CMS ³ Radiation Received	
		N	%	N	%	N	%	N	%	N	%	N	%
Summary stage ⁴													
Localized	9505	8908	35	8408	94.4	8595	38	1289	15.0	8576	38	3810	44.4
Regional	3711	3536	35	3086	87.3	3394	38	1955	57.6	3379	38	1522	45.0
Distant	3412	2693	25	961	35.7	3247	28	2242	69.0	3234	29	570	17.6
Unknown	523	478	37	135	28.2	468	39	223	47.6	466	39	162	34.8
Enrollment type													
Consent enrollment	9835	8780	28	8012	91.3	8904	29	2661	29.9	8890	29	3794	42.7
Partial waiver of consent ⁵	7293	6817	41	4563	66.9	6781	46	3036	44.8	6747	46	2266	33.6
Race ⁶													
Asian	260	234	26	187	79.9	230	29	97	42.2	232	29	100	43.1
Black/African American	923	838	33	643	76.7	811	36	379	46.7	800	38	324	40.5
White	15576	14193	34	11481	80.9	14311	36	5065	35.4	14272	36	5497	38.5
More than one race	169	149	23	120	80.5	153	24	67	43.8	152	25	63	41.4
Other/Not reported	151	136	29	108	79.4	135	33	68	50.4	136	33	57	41.9
Ethnicity													
Not Hispanic/Latina	16654	15171	34	12231	80.6	15269	36	5515	36.1	15219	36	5904	38.8
Hispanic/Latina	399	359	26	292	81.3	352	29	143	40.6	353	29	135	38.2
Unknown/Not reported	75	67	34	52	77.6	64	39	39	60.9	65	40	21	32.3

¹ Participants with leukemia only were excluded from the data items for cancer-directed surgery.

² Documentation about whether the participant received surgery, chemotherapy, or radiation as part of their cancer treatment was available from Medical Record Abstraction or CMS Medicare fee-for-service A+B claims data.

³ CMS is the U.S. Centers for Medicare and Medicaid Services

⁴ Sum is greater than the total number of participants because some women were diagnosed with more than one LILAC-designated cancer on the same date.

⁵ Only deceased participants were eligible for a partial waiver of consent.

⁶ Separate rows for American Indian/Alaska Native n= 37 and Native Hawaiian/Other Pacific Islander n= 12 are not displayed due to small numbers, however these participants are included in the other data items included in the table.

Table 8.1
Status of Virtual Pooled Registry (VPR) Progress

Data as of: March 24, 2026

Status	Registries			High Quality Matches ¹		Records Received ²
	Number of Registries	% of Registries	State Abbreviations	N	%	N
Received data	34	79.1	AK, AL, AZ, CA, CO, CT, GA, HI, ID, IA, IN, KY, LA, MA, MD, ME, MI, MT, ND, NE, NJ, NM, NY, OH, OK, OR, PR, RI, SC, TN, VA, WA (Seattle) ³ , WI, WY	41770	86.4	41460
Approvals in place	4	9.3		4940	10.2	
Waiting to receive data	1	2.3	NH	167	0.3	
DUA pending at FHCC	1	2.3	AR	122	0.3	
DUA pending at registry	2	4.7	NC, TX	4651	9.6	
Approvals under review by external registry/IRB	4	9.3	MO, MS, PA, UT	1578	3.3	
Denied	1	2.3	WV	46	0.1	
Total	43	100.0		48334	100.0	41460

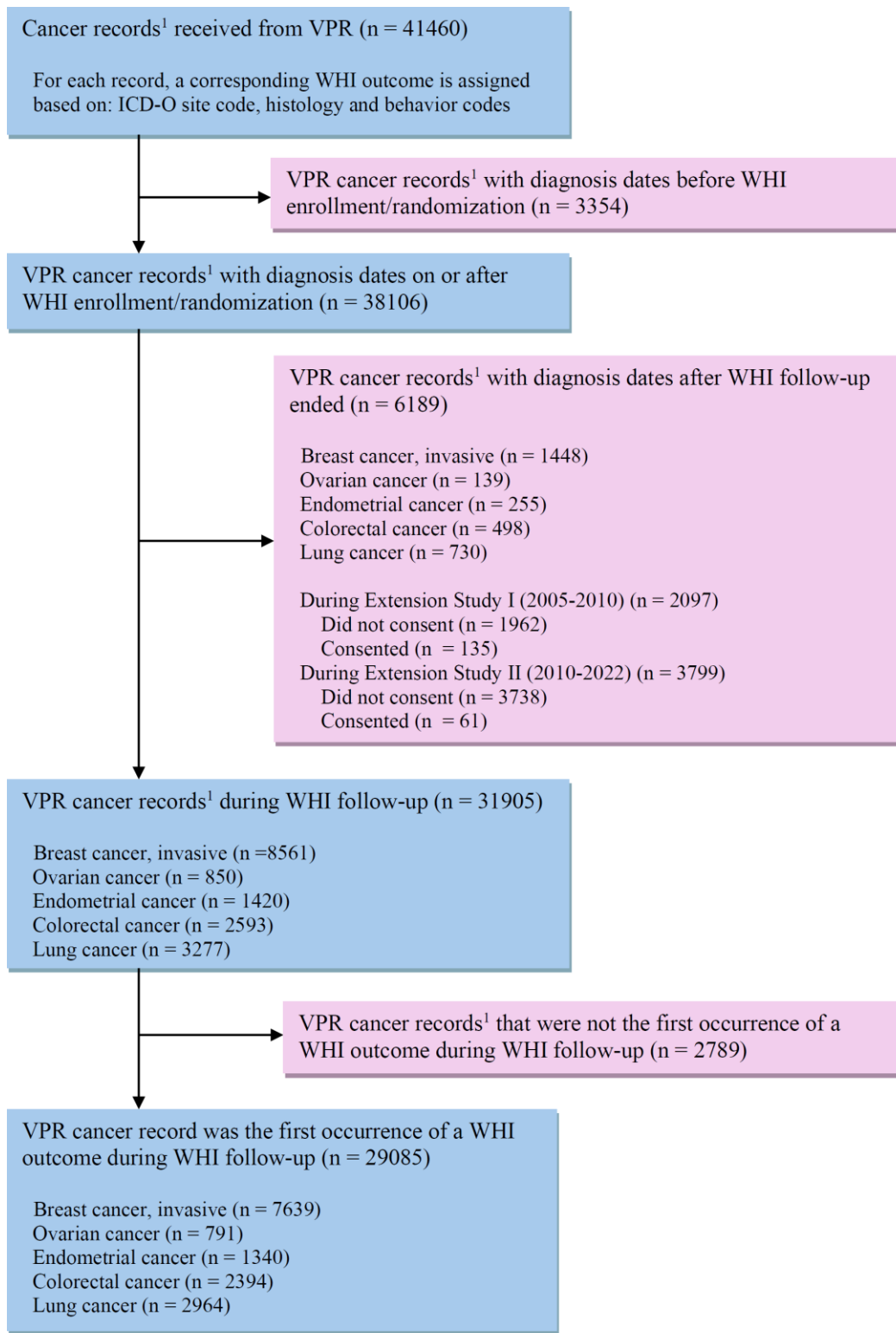
¹ High Quality Matches refer to match counts generated by registries in Phase I of VPR process based on linkage file submitted to VPR-CLS by WHI.

² Actual records received may differ from High Quality Matches if additional matches are identified during manual review during Phase II when the individual-level data is released to WHI. Additionally, "non-matches" and "uncertain" matches are removed, which may reduce the number of records received.

³ Washington has multiple cancer registries, data in VPR is provided by the Seattle SEER Registry.

Figure 8.1
Virtual Pooled Registry (VPR) Process Flow

Data as of: February 21, 2026



¹Cancer records may include multiple primaries and sites per participant